

# SPINK

e-Catalogue

## 23118 - The 'Nikita' Collection of British Commonwealth - e-Auction

### Lot 3001



(x) Great Britain 1840 1d. black, Plate 11, IE, just clear at upper left to good margins on other sides, cancelled by black Maltese cross; a good example of this difficult plate. R.P.S. Certificate (2019). Specialised AS73 Subject to 5% tax on Hammer Price in addition to 20% VAT on Buyer's Premium.

Estimate  
£800 to £1,000

### Lot 3002



(x) Great Britain 1840 One Penny Black Two very fine unplated used examples, AC with large even margins and crisp red Maltese cross cancellation and FK with good to large margins and clear red Maltese cross cancellation Subject to 5% tax on Hammer Price in addition to 20% VAT on Buyer's Premium.

Estimate  
£200 to £250

### Lot 3003



(x) Great Britain 1840 One Penny Black Three used examples, all with four margins comprising: OC, just clear to good margins, ND clear to good margins, small nick at top just clear of frameline and PC with good to large margins; each cancelled by red Maltese cross, good to fine Subject to 5% tax on Hammer Price in addition to 20% VAT on Buyer's Premium.

Estimate  
£200 to £250

### Lot 3004



(x) Great Britain King Edward VII Proofs 1901 De la Rue small head die proof in black on white glazed card (92 x 61mm.), endorsed 'before hardening' and dated '1 aug 01', fine Subject to 5% tax on Hammer Price in addition to 20% VAT on Buyer's Premium.

Estimate  
£400 to £500

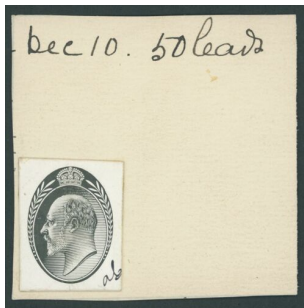
**Lot 3005**



(x) Great Britain King Edward VII Proofs De la Rue large head die proof in black with uncleared surround on white glazed card (92 x 60mm.), no annotations or date; this head design apparently used for Revenue stamp papers; fine Subject to 5% tax on Hammer Price in addition to 20% VAT on Buyer's Premium.

Estimate  
£300 to £400

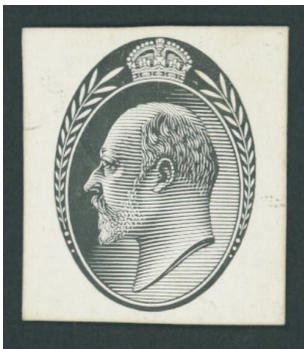
**Lot 3006**



(x) Great Britain King Edward VII Proofs 1901 De la Rue large head die proof with wreathed sides and crown above, cut down and affixed to piece cut from the printer's striking book, signed 'ad' and endorsed 'Dec 10. 50 leads. in manuscript at top; fine Subject to 5% tax on Hammer Price in addition to 20% VAT on Buyer's Premium.

Estimate  
£300 to £400

**Lot 3007**



(x) Great Britain King Edward VII Proofs 1901 De la Rue cut down die proof of a head design with wreathed sides and a crown above in black on white glazed card (21 x 25mm.), fine Subject to 5% tax on Hammer Price in addition to 20% VAT on Buyer's Premium.

Estimate  
£200 to £250

**Lot 3008**



(x) Great Britain King Edward VII Proofs Die proof for a 9d. value in black on white glazed card (90 x 60mm.), no annotations or endorsements; fine Subject to 5% tax on Hammer Price in addition to 20% VAT on Buyer's Premium.

Estimate  
£300 to £400

**Lot 3009**



(x) Great Britain King Edward VII 1902-10 De la Rue 10d. dull purple and carmine, variety no cross on crown, very lightly mounted mint. S.G. 254a, £425 Subject to 5% tax on Hammer Price in addition to 20% VAT on Buyer's Premium.

Estimate  
£150 to £200

### Lot 3010



(x) Great Britain 1902-10 De la Rue mint group of High Values (7) comprising 2/6d. lilac, 2/6d. pale dull purple, 5/- bright carmine from the foot of the sheet, 5/- deep bright carmine and 10/- ultramarine; condition a little mixed with some toning and soiling in places. S.G. 260-265 group, £2,525 Subject to 5% tax on Hammer Price in addition to 20% VAT on Buyer's Premium.

Estimate  
£500 to £700

### Lot 3011



(x) Great Britain 1902-10 De la Rue £1 dull blue green, two mint examples in differing shades, one with a little toning and the other with some small marks on reverse; good appearance. S.G. 266, £4,000 Subject to 5% tax on Hammer Price in addition to 20% VAT on Buyer's Premium.

Estimate  
£700 to £800

### Lot 3012



(x) Great Britain King Edward VII 1911-13 Somerset House 7d. pale grey, block of eighteen from the left of the sheet with full original gum; fine. B.P.A. Certificate (2017). Specialised M38 (3), £1,080+ Subject to 5% tax on Hammer Price in addition to 20% VAT on Buyer's Premium.

Estimate  
£300 to £400

### Lot 3013



(x) Great Britain King George V 1915 De la Rue 2/6d. yellow-brown, a marginal copy from the upper left corner of the sheet, mounted in the margin only; fine. S.G. 406, £550 Subject to 5% tax on Hammer Price in addition to 20% VAT on Buyer's Premium.

Estimate  
£300 to £400

### Lot 3014



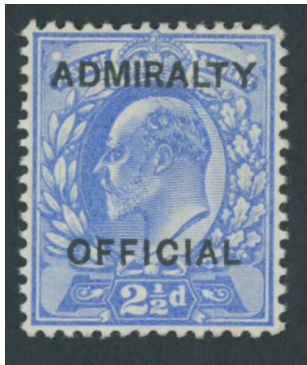
(x) Great Britain King George V 1918-19 Bradbury Wilkinson 10/- steel blue, corner example from the lower left of the sheet, mounted in the margin only; fine and fresh. Specialised N71 (3), £1,100 Subject to 5% tax on Hammer Price in addition to 20% VAT on Buyer's Premium.

Estimate  
£300 to £400

**Lot 3015**

(x) Great Britain Officials 1883-86 Government Parcels 9d. dull green, JT, large part original gum; fine and fresh. B.P.A. Certificate (1989). S.G. O63, £2,750 Subject to 5% tax on Hammer Price in addition to 20% VAT on Buyer's Premium.

Estimate  
£500 to £600

**Lot 3016**

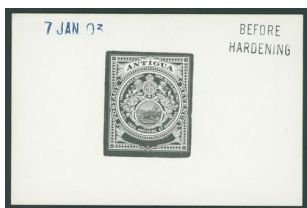
(x) Great Britain Officials 1903 Admiralty 2½d. ultramarine, lightly mounted mint; vertical crease. S.G. O105, £425 Subject to 5% tax on Hammer Price in addition to 20% VAT on Buyer's Premium.

Estimate  
£100 to £150

**Lot 3017**

(x) Antigua 1903-07 Issue 1902 die proof of the central vignette in black on white glazed card (90 x 60mm.), endorsed 'before/hardening' and dated '6 feb. 02', annotated 'antigua Post... orig plate.', fine Subject to 5% tax on Hammer Price in addition to 20% VAT on Buyer's Premium.

Estimate  
£350 to £400

**Lot 3018**

(x) Antigua 1903-07 Issue 1902 master die proof for the lower values without duty plate in black on white glazed card (90 x 60mm.) endorsed 'before/hardening' and dated '7 Jan. 03'; very fine and scarce Subject to 5% tax on Hammer Price in addition to 20% VAT on Buyer's Premium.

Estimate  
£350 to £400

**Lot 3019**

(x) Antigua 1903-07 Issue 1902 master die proof for the 2½d. value frame only in black on white glazed card (90 x 60mm.), endorsed 'before/hardening' and dated '19 feb. 03'; fine and scarce Subject to 5% tax on Hammer Price in addition to 20% VAT on Buyer's Premium.

Estimate  
£350 to £400



### Lot 3020



(x) Antigua 1903-07 Issue 1902 master die proof for the 5/- frame only, in black on white glazed card (90 x 60mm.), endorsed 'before hardening' and dated '11 feb. 03'; fine and scarce provenance: Christie's Robson Lowe, December 1993 Subject to 5% tax on Hammer Price in addition to 20% VAT on Buyer's Premium.

Estimate  
£400 to £500

### Lot 3021



(x) Antigua 1903-07 Issue 6d. purple and drab, variety watermark inverted large part original gum, and a block of nine from the foot of the sheet, lightly mounted on two stamps only; fine. S.G. 36, 36w, £478 Subject to 5% tax on Hammer Price in addition to 20% VAT on Buyer's Premium.

Estimate  
£100 to £150

### Lot 3022



(x) Ascension 1934 set of ten to 5/-, each perforated "specimen", lightly mounted mint, fine. S.G. 21s-30s, £500 Subject to 5% tax on Hammer Price in addition to 20% VAT on Buyer's Premium.

Estimate  
£200 to £250

### Lot 3023



(x) Ascension 1938-53 Issue 1½d. black and vermilion, perf. 13½, variety Davit flaw [5/1] in a block of fifteen from the upper left corner of the sheet; fine unmounted mint. S.G. 40, 40a, £540+ Subject to 5% tax on Hammer Price in addition to 20% VAT on Buyer's Premium.

Estimate  
£250 to £300

### Lot 3024



(x) Ascension 1938-53 Issue 1½d. black and vermilion, perf. 13½, variety Davit flaw [5/1] in a block of four from the left of the sheet, fine unmounted mint. S.G. 40, 40a, £400+ Subject to 5% tax on Hammer Price in addition to 20% VAT on Buyer's Premium.

Estimate  
£200 to £300

**Lot 3025**

(x) Ascension 1938-53 Issue 1½d. black and vermilion, perf. 13½, variety Davit flaw [5/1] in a vertical pair from the left of the sheet; unmounted mint. S.G. 40, 40a, £400+Subject to 5% tax on Hammer Price in addition to 20% VAT on Buyer's Premium.

Estimate  
£150 to £200

**Lot 3026**

(x) Ascension 1938-53 Issue A group of three all with variety mountaineer flaw, comprising 2d. black and red-orange, perf. 13, 2d. black and vermilion, perf. 14 and black and scarlet, perf. 14; lightly mounted mint. S.G. 41aa, 41ba and 41ca, £1,075Subject to 5% tax on Hammer Price in addition to 20% VAT on Buyer's Premium.

Estimate  
£400 to £500

**Lot 3027**

(x) Australia 1937-49 High Values, mint group of shades and printings (11) including 5/- (5), 10/- (3) and £1 (3). S.G. 176-178a group, £400+Subject to 5% tax on Hammer Price in addition to 20% VAT on Buyer's Premium.

Estimate  
£150 to £200

**Lot 3028**

(x) Australian Colonies Victoria 1901-10 Perf. 12½ £1 carmine rose, large part original gum; fine. S.G. 399, £350Subject to 5% tax on Hammer Price in addition to 20% VAT on Buyer's Premium.

Estimate  
£150 to £200

**Lot 3029**

(x) Australian Colonies Victoria 1901-10 perf. 12½ £1 carmine-rose and £2 deep blue, large part original gum; the £1 gum toned. S.G. 399, 400, £1,100Subject to 5% tax on Hammer Price in addition to 20% VAT on Buyer's Premium.

Estimate  
£300 to £400

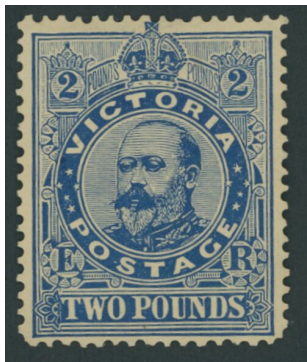
**Lot 3030**



(x) Australian Colonies Victoria 1901-10 Perf. 12½ £2 deep blue, used by clear part Melbourne c.d.s., fine. S.G. 400, £300 Subject to 5% tax on Hammer Price in addition to 20% VAT on Buyer's Premium.

Estimate  
£150 to £200

**Lot 3031**



(x) Australian Colonies Victoria 1905-13 Perf. 12½ £2 dull blue, large part original gum. S.G. 432, £800 Subject to 5% tax on Hammer Price in addition to 20% VAT on Buyer's Premium.

Estimate  
£250 to £300

**Lot 3032**



(x) Australian Colonies Victoria 1905-13 Perf. 12½ £2 dull blue, used with almost complete clear 'Melbourne' c.d.s., fine. S.G. 432, £425 Subject to 5% tax on Hammer Price in addition to 20% VAT on Buyer's Premium.

Estimate  
£200 to £250

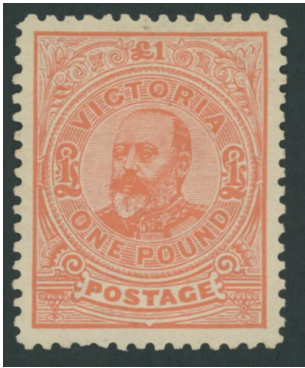
**Lot 3033**



(x) Australian Colonies Victoria 1905-13 Perf. 12½ £2 dull blue, used with part 'Melbourne' c.d.s., fine. S.G. 432, £425 Subject to 5% tax on Hammer Price in addition to 20% VAT on Buyer's Premium.

Estimate  
£200 to £250

**Lot 3034**



(x) Australian Colonies Victoria 1905-13 perf. 11 £1 salmon, diagonal gum bend at top, large part original gum. S.G. 444, £500 Subject to 5% tax on Hammer Price in addition to 20% VAT on Buyer's Premium.

Estimate  
£150 to £200

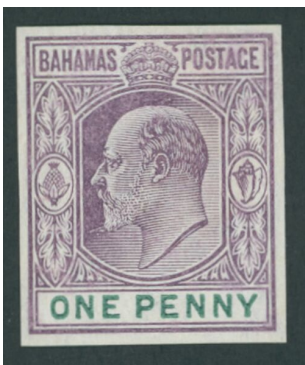
**Lot 3035**



(x) Bahamas 1902-07 2½d. ultramarine, variety sloping '2', part original gum; also part set of seven to 5/-, fine mint. S.G. 63a, 62-69, £400+ Subject to 5% tax on Hammer Price in addition to 20% VAT on Buyer's Premium.

Estimate  
£200 to £250

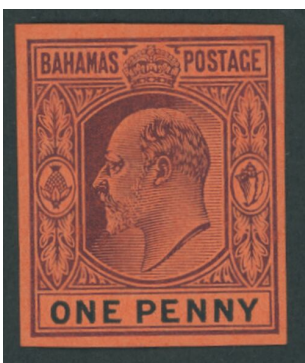
**Lot 3036**



(x) Bahamas 1906-11 Watermark Multiple Crown CA1d. imperforate colour trial in dull purple and green, on gummed watermarked paper; fine and fresh with large part original gum Subject to 5% tax on Hammer Price in addition to 20% VAT on Buyer's Premium.

Estimate  
£300 to £400

**Lot 3037**

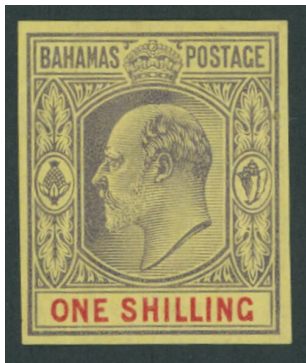


(x) Bahamas 1906-11 Watermark Multiple Crown CA1d. imperforate colour trial in purple and black on red, on gummed watermarked paper, very fine and fresh with large part original gum provenance: 'Abaco', Grosvenor, June 2010 Subject to 5% tax on Hammer Price in addition to 20% VAT on Buyer's Premium.

Estimate  
£300 to £400



**Lot 3038**



(x) Bahamas 1906-11 Watermark Multiple Crown CA1/- imperforate colour trial in violet and vermillion on yellow, on gummed watermarked paper, fine and fresh with large part original gum provenance: Morris Ludington, November 1999 Subject to 5% tax on Hammer Price in addition to 20% VAT on Buyer's Premium.

Estimate  
£300 to £400

**Lot 3039**



(x) Bahrain 1938-41 set of sixteen to 25r., lightly mounted mint; fine and fresh. S.G. 20-37, £1,000 Subject to 5% tax on Hammer Price in addition to 20% VAT on Buyer's Premium.

Estimate  
£300 to £400

**Lot 3040**



(x) Barbados 1892-1903 3d. imperforate colour trial in mauve, country name picked out in Chinese white (a little chipped away) on unwatermarked paper without gum Subject to 5% tax on Hammer Price in addition to 20% VAT on Buyer's Premium.

Estimate  
£300 to £400

**Lot 3041**



(x) Barbados 1892-103 imperforate colour trial in bright lilac, affixed to small piece of card (26 x 22mm.), fine Subject to 5% tax on Hammer Price in addition to 20% VAT on Buyer's Premium.

Estimate  
£300 to £350

### Lot 3042



(x) Barbados 1892-1903 imperforate colour trial in olive-brown, affixed to small piece of white card (26 x 22mm.), fine. Subject to 5% tax on Hammer Price in addition to 20% VAT on Buyer's Premium.

Estimate  
£300 to £350

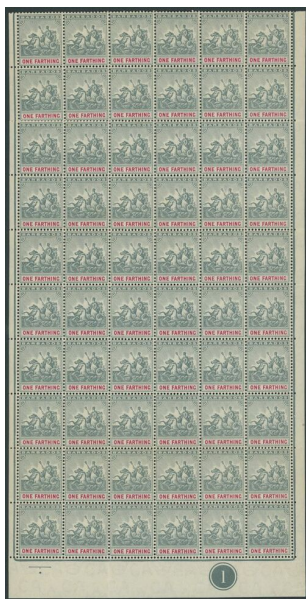
### Lot 3043



(x) Barbados 1892-1903 2/6d. violet and green, block of four, large part original gum with the lower pair unmounted. S.G. 115, £600+. Subject to 5% tax on Hammer Price in addition to 20% VAT on Buyer's Premium.

Estimate  
£300 to £400

### Lot 3044



(x) Barbados 1905 MCA 1/4d. slate-grey and carmine, pane of sixty with plate number '1' and 1906 Tercentenary 1d. black, blue and green block of thirty with margins on three sides; fine and attractive multiples. S.G. 135, 152, £1,350. Subject to 5% tax on Hammer Price in addition to 20% VAT on Buyer's Premium.

Estimate  
£350 to £400

**Lot 3045**

(x) Bechuanaland 1910 Postal Fiscal 6d. black and brown-orange, lightly mounted mint. S.G. F1 Subject to 5% tax on Hammer Price in addition to 20% VAT on Buyer's Premium.

Estimate  
£80 to £100

**Lot 3046**

(x) Bermuda 1874 3d. on 1/- green (Type 6), used; fine. R.P.S. Certificate (2013). S.G. 13, £850 Subject to 5% tax on Hammer Price in addition to 20% VAT on Buyer's Premium.

Estimate  
£300 to £400

**Lot 3047**

(x) Bermuda 1902-10 mint group on pages including 1902-03 CA 1/2d., 1d. and 3d., 1906-10 MCA 1/4d. to 4d. set of nine, also a group of multiples including blocks of four of most values to 4d., generally fine. S.G. 31-42 group Subject to 5% tax on Hammer Price in addition to 20% VAT on Buyer's Premium.

Estimate  
£200 to £300

**Lot 3048**

(x) Bermuda 1906-10 Watermark Multiple Crown CA 1/4d. frame only die proof in black on white glazed card (90 x 60mm.) endorsed 'before/ hardening' and dated '13 may 1902', fine and scarce provenance: Sir Gawaine Baillie, February 2005 Subject to 5% tax on Hammer Price in addition to 20% VAT on Buyer's Premium.

Estimate  
£300 to £400

**Lot 3049**

(x) Bermuda 1906-10 Watermark Multiple Crown CA 1d. frame only die proof in black on white glazed card (90 x 60mm.) endorsed 'before/ hardening' and dated '1 sep 03', fine Subject to 5% tax on Hammer Price in addition to 20% VAT on Buyer's Premium.

Estimate  
£300 to £400

**Lot 3050**

(x) Bermuda 1906-10 Watermark Multiple Crown CA 4d. frame only die proof in black on white glazed card (90 x 60mm.) endorsed 'before/ hardening' and dated '9 may 06', fine Subject to 5% tax on Hammer Price in addition to 20% VAT on Buyer's Premium.

Estimate  
£300 to £400

**Lot 3051**

(x) Bermuda 1906-10 Watermark Multiple Crown CA 1d. imperforate colour trial in brown and red-brown on gummed watermarked paper, large part original gum; fine and scarce Subject to 5% tax on Hammer Price in addition to 20% VAT on Buyer's Premium.

Estimate  
£300 to £400

**Lot 3052**

(x) British East Africa 1896-1901 CA set of sixteen to 5r., each overprinted "specimen", large part original gum. S.G. 65s-79s, £350 Subject to 5% tax on Hammer Price in addition to 20% VAT on Buyer's Premium.

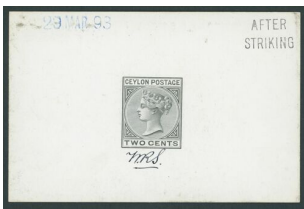
Estimate  
£150 to £200



**Lot 3053**

(x) British East Africa 1896-1901 CA group of mint multiples comprising 1½a., 2½a., 3a., 4a., 4½a., 5a. and 8a. blocks of four, 1a. block of six and 2a. block of twelve, also 2a. to 8a. values each top marginal examples with part inscription; part to large part original gum. S.G. £750+Subject to 5% tax on Hammer Price in addition to 20% VAT on Buyer's Premium.

Estimate  
£300 to £400

**Lot 3054**

(x) British Guiana 1900-03 CA 1c. to 60c. set of seven including both shades of the 48c., also the set of six overprinted "specimen", large part original gum; fine. S.G. 233s-238s, 233-238, £285Subject to 5% tax on Hammer Price in addition to 20% VAT on Buyer's Premium.

Estimate  
£100 to £150

**Lot 3055**

(x) British Guiana 1905-07 MCA set of eleven to 96c., 5c. and 96c. overprinted "specimen", 1905 MCA \$2.40 along with an example overprinted "specimen"; large part original gum, fine. S.G. 240-250, 243s, 250s, 251, 251s, £500Subject to 5% tax on Hammer Price in addition to 20% VAT on Buyer's Premium.

Estimate  
£250 to £300

**Lot 3056**

(x) British Honduras 1904-07 2c. purple and black on red on chalk surfaced paper, a block of six with the upper left stamp showing damaged frame and crown, full original gum, fine. S.G. 85a, 85ab, £180+Subject to 5% tax on Hammer Price in addition to 20% VAT on Buyer's Premium.

Estimate  
£100 to £150

**Lot 3057**

(x) British Honduras 1904-07 2c. purple and black on red (used) and 10c. dull-purple and emerald green (mint) both variety damaged frame and crown, fine and fresh examples. S.G. 85aa, 87a, £255Subject to 5% tax on Hammer Price in addition to 20% VAT on Buyer's Premium.

Estimate  
£100 to £150

**Lot 3058**



(x) British Honduras 1908-11 MCA 25c. black on green, a block of eighteen from the foot of the sheet with interpanneau margin at right, full original gum, fine. S.G. 100 Subject to 5% tax on Hammer Price in addition to 20% VAT on Buyer's Premium.

Estimate  
£80 to £100

**Lot 3059**



(x) British Levant 1906 Beyrout Provisional 1pi. on 2d. grey-green and carmine, two examples tied to piece by 'beyrout/british post office' c.d.s. for July 3rd 1906, some age related marks, nevertheless rare. S.G. 15, £1,500 Subject to 5% tax on Hammer Price in addition to 20% VAT on Buyer's Premium.

Estimate  
£400 to £500

**Lot 3060**



(x) British Levant 1911-13 10d. reddish purple and aniline pink, fine mint with interpanneau margin at foot. R.P.S. Certificate (1974). S.G. 31a, £325 Subject to 5% tax on Hammer Price in addition to 20% VAT on Buyer's Premium.

Estimate  
£150 to £200

**Lot 3061**



(x) British Levant 1911-13 24pi. on 5/- carmine, variety surcharge double, one albino, large part original gum; fine. R.P.S. Certificate (1997). S.G. 34a, £325 Subject to 5% tax on Hammer Price in addition to 20% VAT on Buyer's Premium.

Estimate  
£150 to £200

### Lot 3062



(x) British Solomon Islands 1907 Large Canoe set of seven imperforate plate proofs, the ½d., 1d. and 1/- marginal with part imprint; fine. Subject to 5% tax on Hammer Price in addition to 20% VAT on Buyer's Premium.

Estimate  
£200 to £300

### Lot 3063



(x) British Solomon Islands 1907 ½d. ultramarine, a complete sheet of sixty with margins on virtually all sides with just a strip missing from upper three stamps, a very few tone spots; almost full original gum. S.G. 1, £660. Subject to 5% tax on Hammer Price in addition to 20% VAT on Buyer's Premium.

Estimate  
£200 to £250

### Lot 3064



(x) British Solomon Islands 1908-11 Small Canoe 2/-, 2/6d. and 5/- each overprinted "specimen" and additionally handstamped 'ultramar' in blue; fine. Subject to 5% tax on Hammer Price in addition to 20% VAT on Buyer's Premium.

Estimate  
£100 to £150

### Lot 3065



(x) British Solomon Islands 1908-11 MCA set of eleven, each value in a block of four; fine and fresh mint. S.G. 8-17, £800+. Subject to 5% tax on Hammer Price in addition to 20% VAT on Buyer's Premium.

Estimate  
£300 to £400

### Lot 3066



(x) British Solomon Islands 1908-11 MCA ½d. green, 1d. red and 2d. greyish-slate, each in a complete pane of sixty and the ½d. additionally in a block of twenty-one; generally good to fine and with almost full original gum. S.G. 8-10, £270+. Subject to 5% tax on Hammer Price in addition to 20% VAT on Buyer's Premium.

Estimate  
£150 to £200



**Lot 3067**



(x) Brunei1906 Labuan Overprints1c. to \$1 set of twelve, fine mint. S.G. 11-22, £600Subject to 5% tax on Hammer Price in addition to 20% VAT on Buyer's Premium.

Estimate  
£220 to £240

**Lot 3068**



(x) Brunei1906 Labuan Overprints2c. on 3c. brown, variety line through 'b', large part original gum; fine. S.G. 12c, £325Subject to 5% tax on Hammer Price in addition to 20% VAT on Buyer's Premium.

Estimate  
£150 to £200

**Lot 3069**



(x) Brunei1906 Labuan Overprints4c. on 12c. black and yellow, variety line through 'b', large part original gum; fine. S.G. 15a, £350Subject to 5% tax on Hammer Price in addition to 20% VAT on Buyer's Premium.

Estimate  
£150 to £200

**Lot 3070**



(x) Brunei1906 Labuan Overprints10c. on 16c. green and brown, variety line through 'b', large part original gum; fine. S.G. 18a, £450Subject to 5% tax on Hammer Price in addition to 20% VAT on Buyer's Premium.

Estimate  
£200 to £250

**Lot 3071**



(x) Canada18516d. slate-violet, good balanced margins, cancelled by complete concentric circles obliteration and small part red postmark, slightly thinned otherwise sound. S.G. 2, £1,400; SC 2Subject to 5% tax on Hammer Price in addition to 20% VAT on Buyer's Premium.

Estimate  
£400 to £500



**Lot 3072**



(x) Canada18516d. slate-violet, good to large margins; slightly thinned, used by indistinct cancellation. R.P.S. Certificate (1950). S.G. 2, £1,400; Sc. 2Subject to 5% tax on Hammer Price in addition to 20% VAT on Buyer's Premium.

Estimate  
£350 to £400

**Lot 3073**



(x) Canada18516d. greyish purple, without visible laid lines in paper, cancelled by clear target obliterator; small internal central cut. Vincent Greene Certificate (2018). S.G. 3, £1,500; Sc. 2bSubject to 5% tax on Hammer Price in addition to 20% VAT on Buyer's Premium.

Estimate  
£300 to £400

**Lot 3074**



(x) Canada1852-571852 (23 Nov.) envelope to Montreal bearing 3d. red on medium wove paper with good to large margins, tied to envelope by concentric circles cancellation, 'toronto-canada' c.d.s. at foot, closed tear at top of envelope well away from adhesive. S.G. 5/8 groupSubject to 5% tax on Hammer Price in addition to 20% VAT on Buyer's Premium.

Estimate  
£200 to £300

**Lot 3075**



(x) Canada1852-573d. red, two shades, both with good margins and target cancellations. S.G. 5/8 groupSubject to 5% tax on Hammer Price in addition to 20% VAT on Buyer's Premium.

Estimate  
£200 to £300

**Lot 3076**



(x) Canada1852-573d. red vertical pair, good to large margins and portion of adjoining stamp visible at foot, cancelled by concentric circles; light diagonal crease affecting upper stamp otherwise fine. S.G. 5, £500+Subject to 5% tax on Hammer Price in addition to 20% VAT on Buyer's Premium.

Estimate  
£180 to £220

**Lot 3077**



(x) Canada 1852-57 6d. slate violet, good to large margins, faint cancellation; a good used example. S.G. 9, £1,100; SC 5, \$1,600 Subject to 5% tax on Hammer Price in addition to 20% VAT on Buyer's Premium.

Estimate  
£400 to £500

**Lot 3078**



(x) Canada 1852-57 6d. slate violet grey, clear to large margins, a good used example. Vincent Greene Certificate (2018). S.G. 9, £1,100; SC 5, \$1,600 Subject to 5% tax on Hammer Price in addition to 20% VAT on Buyer's Premium.

Estimate  
£300 to £400

**Lot 3079**



(x) Canada 1852-57 6d. slate-grey, good balanced margins, target cancellation; some thinning and a pin hole. S.G. 9, £1,100; SC 5, \$1,600 Subject to 5% tax on Hammer Price in addition to 20% VAT on Buyer's Premium.

Estimate  
£300 to £400

**Lot 3080**



(x) Canada 1852-57 6d. slate grey, good to very large margins, cancelled by concentric circles; a sound example. S.G. 9, £1,100; SC 5, \$1,600 Subject to 5% tax on Hammer Price in addition to 20% VAT on Buyer's Premium.

Estimate  
£300 to £400

**Lot 3081**



(x) Canada 1852-576d. slate-grey, good to large margins and part of adjoining stamp visible at top, cancelled by square grid. Philatelic Foundation Certificate (1994). S.G. 9, £1,100; SC 5, \$1,600 Subject to 5% tax on Hammer Price in addition to 20% VAT on Buyer's Premium.

Estimate  
£300 to £400

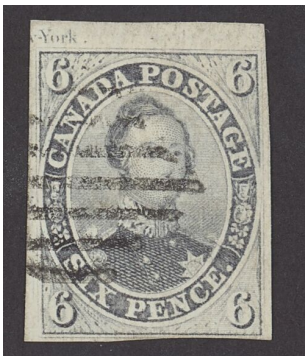
**Lot 3082**



(x) Canada 1852-576d. slate grey, clear to good margins; used with faint cancellation, soiled and toned. Vincent Greene Certificate (2018). S.G. 9, £1,100; SC 5, \$1,600 Subject to 5% tax on Hammer Price in addition to 20% VAT on Buyer's Premium.

Estimate  
£200 to £300

**Lot 3083**



(x) Canada 1852-576d. grey violet on thicker hard paper, a fine used example from the top of the sheet showing small part imprint at top, good to large margins elsewhere, cancelled by oval of bars. Vincent Greene Certificate (2018). S.G. 10, £1,200; SC 5d, \$4,000 Subject to 5% tax on Hammer Price in addition to 20% VAT on Buyer's Premium.

Estimate  
£500 to £700

**Lot 3084**



(x) Canada 1852-57 1/2d. rose on thicker hard paper, clear to large margins and large part original gum; very fine and fresh. Vincent Greene Certificate (2018). S.G. 17, £1,000; SC 8, \$1,400 Subject to 5% tax on Hammer Price in addition to 20% VAT on Buyer's Premium.

Estimate  
£400 to £500



**Lot 3085**



(x) Canada 1858-59 Perf. 11 $\frac{3}{4}$ ½d deep rose, centered to right, small part original gum; fine. S.G. 25, £4,750; SC 11, \$5,000 Subject to 5% tax on Hammer Price in addition to 20% VAT on Buyer's Premium.

Estimate  
£400 to £500

**Lot 3086**



(x) Canada 1858-59 Perf. 11 $\frac{3}{4}$ 3d. red, cancelled by numeral '2' obliterator; fine. S.G. 26, £600; SC 12, \$1,400 Subject to 5% tax on Hammer Price in addition to 20% VAT on Buyer's Premium.

Estimate  
£250 to £300

**Lot 3087**



(x) Canada 1859 perf. 12 1c. rose (toned and no gum), 5c. deep red, 17c. deep blue and 1864 2c. rose-red, large part original gum unless mentioned. S.G. 29, 31, 42, 44 Subject to 5% tax on Hammer Price in addition to 20% VAT on Buyer's Premium.

Estimate  
£400 to £500

**Lot 3088**



(x) Canada 1870-90 Small Queen mint group of fourteen (14) from ½c. to 10c. with shades and 1893 20c. vermilion and 50c. blue; generally good to fine mint. S.G. 72-89 group and 115/116 Subject to 5% tax on Hammer Price in addition to 20% VAT on Buyer's Premium.

Estimate  
£250 to £300

**Lot 3089**



(x) Canada 1897 Jubilee ½c. to \$5 set of sixteen, fine used all lightly hinged to album page. S.G. 121-140, £3,500 Subject to 5% tax on Hammer Price in addition to 20% VAT on Buyer's Premium.

Estimate  
£1,000 to £1,500



**Lot 3090**

(x) Canada 1897 Jubilee 2c. deep green, 6c. brown and \$1 large part original gum. S.G. 125, 129 and 136, £725 Subject to 5% tax on Hammer Price in addition to 20% VAT on Buyer's Premium.

Estimate  
£250 to £300

**Lot 3091**

(x) Canada 1903-12 mint group comprising 20c. pale olive green overprinted "specimen", 5c. blue imperforate plate proof, 1c. deep green marginal showing hairlines, 7c. straw, 10c. pale dull purple and 20c. deep olive green. S.G. 174, 181a, 184, 186 etc. Subject to 5% tax on Hammer Price in addition to 20% VAT on Buyer's Premium.

Estimate  
£300 to £400

**Lot 3092**

(x) Canada 1903-12 1c. deep green and 2c. rose-carmine marginal blocks of six and 7c. straw block of four from the top of the sheet with part imprint also 2c. block of eight imperforate with full imprint; 1c. and 2c. blocks without gum, the 7c. block unmounted mint. S.G. 174, 176 and 181a, £700 etc. Subject to 5% tax on Hammer Price in addition to 20% VAT on Buyer's Premium.

Estimate  
£250 to £300

**Lot 3093**

(x) Canada 1875 Registration labels (3), 2c. orange, 5c. deep green and 8c. bright blue; the 8c. without gum. S.G. R1, R6 and R8, £675 Subject to 5% tax on Hammer Price in addition to 20% VAT on Buyer's Premium.

Estimate  
£100 to £150

**Lot 3094**

(x) Cape of Good Hope 1902-04 2d. brown, marginal block of six with plate number '1' and 5/- brown-orange single example; fine mint. S.G. 72, 78, £328+Subject to 5% tax on Hammer Price in addition to 20% VAT on Buyer's Premium.

Estimate  
£100 to £150

**Lot 3095**

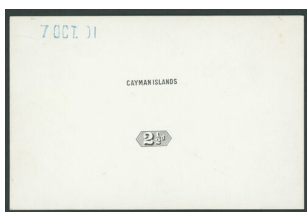
(x) Cayman Islands 1900-1907 mint group comprising 1900 1/2d. and 1d., 1902-03 CA set to 1/-, 1905 MCA set to 1/- and 1907 MCA set to 5/- also 1907-09 3d. pane of forty-eight with plate number '1' at foot; large part original gum. S.G. 1-16 and 28, £697 Subject to 5% tax on Hammer Price in addition to 20% VAT on Buyer's Premium.

Estimate  
£300 to £350

**Lot 3096**

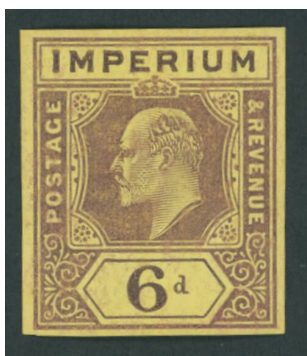
(x) Cayman Islands 1902-1907 mint group on album pages comprising 1902-03 CA and 1905 MCA sets to 1/-, 1907 MCA set to 5/-, 1907 1 1/2d. on 1d. carmine, 1/2d. on 5/- salmon and green and 1d. on 5/- salmon on green, 1907 MCA set to 10/-, also some multiples with values to 6d., fine and fresh mint. S.G. cat. value £1,500+Subject to 5% tax on Hammer Price in addition to 20% VAT on Buyer's Premium.

Estimate  
£400 to £500

**Lot 3097**

(x) Cayman Islands 1902-03 Watermark Crown CA 2 1/2d. duty plate die proof in black on white glazed card (90 x 60mm.), dated '7 oct. 01', fine and scarce Subject to 5% tax on Hammer Price in addition to 20% VAT on Buyer's Premium.

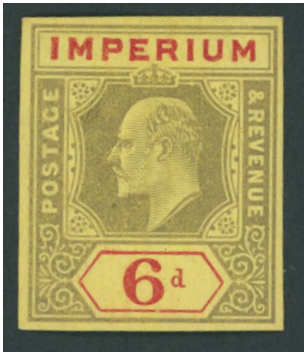
Estimate  
£350 to £400

**Lot 3098**

(x) Cayman Islands 1908 Imperium imperforate colour trial from the colour scheme appendix sheet in purple on yellow gummed watermarked paper, large part original gum; fine and fresh provenance: De la Rue Archives Graham Booth Stone Subject to 5% tax on Hammer Price in addition to 20% VAT on Buyer's Premium.

Estimate  
£350 to £400

**Lot 3099**



(x) Cayman Islands 1908 Imperium imperforate colour trial from the colour scheme appendix sheet in black and red on yellow gummed watermarked paper; large part original gum, fine and fresh provenance: De la Rue Archives Graham Booth Stone Subject to 5% tax on Hammer Price in addition to 20% VAT on Buyer's Premium.

Estimate  
£350 to £400

**Lot 3100**



(x) Cayman Islands 1908 Imperium imperforate colour trial from the colour scheme appendix sheet in dull and bright purple on gummed watermarked paper; large part original gum; fine and fresh provenance: De la Rue Archives Subject to 5% tax on Hammer Price in addition to 20% VAT on Buyer's Premium.

Estimate  
£350 to £400

**Lot 3101**



(x) Cayman Islands 1902-03 CA 1/2d. to 1/- set of five, each in a block of four, the 1/2d., 1d., 6d. and 1/- all with plate number '1'; fine and lightly mounted mint. S.G. 3-7, £440+ Subject to 5% tax on Hammer Price in addition to 20% VAT on Buyer's Premium.

Estimate  
£300 to £400

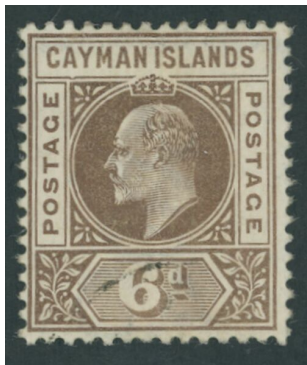
**Lot 3102**



(x) Cayman Islands 1902-03 Watermark Crown CA 1/2d. green, variety dented frame, large part original gum; fine. S.G. 3a, £300 Subject to 5% tax on Hammer Price in addition to 20% VAT on Buyer's Premium.

Estimate  
£150 to £200

**Lot 3103**



(x) Cayman Islands 1902-03 Watermark Crown CA6d. brown, variety dented frame, used with very light indistinct cancellation; vertical crease, very scarce. S.G. 6a, £1,200 Subject to 5% tax on Hammer Price in addition to 20% VAT on Buyer's Premium.

Estimate  
£300 to £400

**Lot 3104**



(x) Cayman Islands 1902-03 Watermark Crown CA1/- orange, variety dented frame, large part slightly toned original gum and short perf at top, nevertheless very scarce. S.G. 7a, £950 Subject to 5% tax on Hammer Price in addition to 20% VAT on Buyer's Premium.

Estimate  
£300 to £400

**Lot 3105**



(x) Cayman Islands 1905 Watermark Multiple Crown CA1/2d. to 1/- set of five each marginal with plate number '1', and 1d. carmine block of ten from the upper left corner of the sheet with plate number '1', upper stamp with damaged crown flaw (a few tone spots on reverse), large part original gum. S.G. 8-12 etc., £345+ Subject to 5% tax on Hammer Price in addition to 20% VAT on Buyer's Premium.

Estimate  
£120 to £150

**Lot 3106**



(x) Cayman Islands 1905 Watermark Multiple Crown CA1d. carmine, variety dented frame, large part original gum; fine. S.G. 9a, £550 Subject to 5% tax on Hammer Price in addition to 20% VAT on Buyer's Premium.

Estimate  
£250 to £300



**Lot 3107**



(x) Cayman Islands 1905 Watermark Multiple Crown CA2½d. bright blue, variety dented frame, large part original gum; fine. S.G. 10a, £400 Subject to 5% tax on Hammer Price in addition to 20% VAT on Buyer's Premium.

Estimate  
£150 to £200

**Lot 3108**



(x) Cayman Islands 1905 Watermark Multiple Crown CA1/- orange, variety dented frame, large part original gum; fine. S.G. 12a, £650 Subject to 5% tax on Hammer Price in addition to 20% VAT on Buyer's Premium.

Estimate  
£300 to £350

**Lot 3109**



(x) Cayman Islands 1907-09 Watermark Multiple Crown CA½d. to 10/- set of nine, each overprinted "specimen", lightly mounted mint; fine. S.G. 25s-34s, £350 Subject to 5% tax on Hammer Price in addition to 20% VAT on Buyer's Premium.

Estimate  
£150 to £200

**Lot 3110**



(x) Cayman Islands 1907 Watermark Multiple Crown CA4d. brown and blue, variety dented frame, large part original gum; fine. S.G. 13a, £800 Subject to 5% tax on Hammer Price in addition to 20% VAT on Buyer's Premium.

Estimate  
£300 to £400

**Lot 3111**



(x) Cayman Islands 1907 Watermark Multiple Crown CA1/- violet and green, variety dented frame, lightly mounted mint; fine and fresh. S.G. 15a, £950 Subject to 5% tax on Hammer Price in addition to 20% VAT on Buyer's Premium.

Estimate  
£400 to £500

**Lot 3112**



(x) Cayman Islands 1907 Watermark Multiple Crown CA5/- salmon and green, variety dented frame, lightly mounted mint; fine and rare with just nineteen possible examples. S.G. 16a, £5,000 Subject to 5% tax on Hammer Price in addition to 20% VAT on Buyer's Premium.

Estimate  
£2,500 to £3,000

**Lot 3113**



(x) Cayman Islands 1907 'One Halfpenny' on 1d. carmine, a block of six from the lower right corner of the sheet with plate number '1', lightly mounted mint and a fine multiple. S.G. 17, £360+ Subject to 5% tax on Hammer Price in addition to 20% VAT on Buyer's Premium.

Estimate  
£200 to £250

**Lot 3114**



(x) Cayman Islands 1907 Georgetown Provisionals 1/2d. on 5/- salmon and green, a block of four from the foot of the sheet; unmounted mint, superb and a rare multiple. S.G. 18, £1,300+provenance: Stanley Gibbons Auction, March 1981 Subject to 5% tax on Hammer Price in addition to 20% VAT on Buyer's Premium.

Estimate  
£800 to £1,200

**Lot 3115**



(x) Cayman Islands 1907 Georgetown Provisionals 1/2d. on 5/- salmon and green, large part original gum; fine. S.G. 18, £325 Subject to 5% tax on Hammer Price in addition to 20% VAT on Buyer's Premium.

Estimate  
£150 to £200

**Lot 3116**



(x) Cayman Islands 1907 Georgetown Provisionals 1/2d. on 5/- salmon and green, large part original slightly disturbed gum; fine. B.P.A. Certificate (2019). S.G. 18, £325 Subject to 5% tax on Hammer Price in addition to 20% VAT on Buyer's Premium.

Estimate  
£150 to £200

**Lot 3117**



(x) Cayman Islands 1907 Georgetown Provisionals 1/2d. on 5/- salmon and green, horizontal pair tied to small piece by single crisp strike of 'georgetown/ grand cayman' c.d.s. for 26th November, fine and a scarce multiple. R.P.S. Certificate (2002). S.G. 18, £900+ Subject to 5% tax on Hammer Price in addition to 20% VAT on Buyer's Premium.

Estimate  
£350 to £400

**Lot 3118**



(x) Cayman Islands 1907 Georgetown Provisionals 1/2d. on 5/- salmon and green, variety surcharge double, fine and fresh mint; very rare with only twenty examples thought to exist, one of which is used and four are in pair with normal, one of these pairs is in the Royal Philatelic collection. B.P.A. Certificate (1951). S.G. 18b, £12,000 Subject to 5% tax on Hammer Price in addition to 20% VAT on Buyer's Premium.

Estimate  
£5,000 to £7,000

### Lot 3119



(x) Cayman Islands 1907 Georgetown Provisionals 1d. on 5/- salmon and green, a block of four with large part original gum; a scarce multiple. S.G. 19, £1,100+ Subject to 5% tax on Hammer Price in addition to 20% VAT on Buyer's Premium.

Estimate  
£600 to £800

### Lot 3120



(x) Cayman Islands 1907 Georgetown Provisionals 1d. on 5/- salmon and green, tied to piece by 'cayman brace/ cayman islands c.d.s. and another strike alongside; fine. S.G. 19, £400 Subject to 5% tax on Hammer Price in addition to 20% VAT on Buyer's Premium.

Estimate  
£180 to £220

### Lot 3121



(x) Cayman Islands 1907-09 Watermark Multiple Crown CA 1/2d. green, variety damaged frame and crown, a used example with c.d.s. cancel; fine. S.G. 25a, £225 Subject to 5% tax on Hammer Price in addition to 20% VAT on Buyer's Premium.

Estimate  
£100 to £150

### Lot 3122



(x) Cayman Islands 1907-09 MCA 5/- green and red on yellow block of four and 1908 CA 10/- green and red on green, a block of four from the upper right corner of the sheet with plate number '1', mounted in the margin and on one stamp only, very fine and the latter a scarce multiple. S.G. 32 and 34, £888 Subject to 5% tax on Hammer Price in addition to 20% VAT on Buyer's Premium.

Estimate  
£600 to £800



**Lot 3123**



(x) Cayman Islands 1908 Provisional 2½d. on 4d. brown and blue, large part original gum; fine. B.P.A. Certificate (1989). S.G. 35, £1,800 Subject to 5% tax on Hammer Price in addition to 20% VAT on Buyer's Premium.

Estimate  
£550 to £600

**Lot 3124**



(x) Cayman Islands 1908 Provisional 2½d. on 4d. brown and blue, large part original gum; several expert pencil signatures on the reverse including A.D.(iena). B.P.A. Certificate (1979). S.G. 35, £1,800 Subject to 5% tax on Hammer Price in addition to 20% VAT on Buyer's Premium.

Estimate  
£550 to £600

**Lot 3125**



(x) Cayman Islands 1908 Provisional 2½d. on 4d. brown and blue, used and tied to small piece by clear part 'George Town' c.d.s., the stamp a little rubbed and soiled, nevertheless rare. R.P.S. Certificate (1920) signed E. D. Bacon. S.G. 35, £3,500 Subject to 5% tax on Hammer Price in addition to 20% VAT on Buyer's Premium.

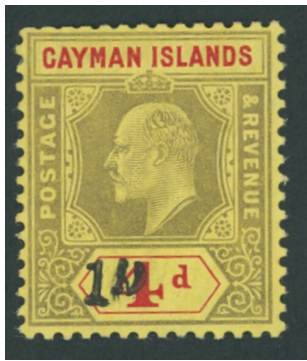
Estimate  
£1,500 to £2,000

**Lot 3126**



(x) Cayman Islands 1935 Script 10/- black and scarlet, a block of twelve with margins on either side, being two complete rows of six; fine unmounted mint. S.G. 107, £1,200+ Subject to 5% tax on Hammer Price in addition to 20% VAT on Buyer's Premium.

Estimate  
£700 to £900

**Lot 3127**

(x) Cayman Islands 1908 Revenue 1d. on 4d. black and red on yellow, a few trimmed perfs at top otherwise fine, lightly mounted mint. Barefoot 1 Subject to 5% tax on Hammer Price in addition to 20% VAT on Buyer's Premium.

Estimate  
£150 to £200

**Lot 3128**

(x) Ceylon 1903-052c. master die proof in black on white glazed card (90 x 60mm.), endorsed 'before/ hardening' and dated '3 mar. 03', fine Subject to 5% tax on Hammer Price in addition to 20% VAT on Buyer's Premium.

Estimate  
£250 to £300

**Lot 3129**

(x) Ceylon 1903-052c. master die proof in black on white glazed card (90 x 60mm.), initialled 'G.w.', endorsed 'after/ hardening' and dated '5 mar. 03', fine Subject to 5% tax on Hammer Price in addition to 20% VAT on Buyer's Premium.

Estimate  
£250 to £300

**Lot 3130**

(x) Ceylon 1903-05 Master die proof with uncleared value tablet as used for the 3c., 12c., 75c., etc. in black on white glazed card (90 x 60mm.) endorsed 'before/ hardening' and dated '12 jan. 03'; fine Subject to 5% tax on Hammer Price in addition to 20% VAT on Buyer's Premium.

Estimate  
£250 to £300

**Lot 3131**

(x) Ceylon 1903-054c. die proof of the value tablet only in black on white glazed card (90 x 60mm.), endorsed 'before/ hardening' and dated '14 feb. 03'; fine Subject to 5% tax on Hammer Price in addition to 20% VAT on Buyer's Premium.

Estimate  
£250 to £300

**Lot 3132**

(x) Ceylon 1903-055c. master die proof in black on white glazed card (90 x 60mm.), endorsed 'before/ hardening' and dated '29 sep 02', fine Subject to 5% tax on Hammer Price in addition to 20% VAT on Buyer's Premium.

Estimate  
£300 to £400

**Lot 3133**

(x) Ceylon1903-056c. master die proof in black on white glazed card (90 x 60mm.), endorsed 'before/ hardening' and dated '2 mar. 03', fine. Subject to 5% tax on Hammer Price in addition to 20% VAT on Buyer's Premium.

Estimate  
£300 to £400

**Lot 3134**

(x) Ceylon1903-051r.50c. greyish slate, a block of four from the top of the sheet with plate number '1', lightly mounted mint; fine. S.G. 275, £300+. Subject to 5% tax on Hammer Price in addition to 20% VAT on Buyer's Premium.

Estimate  
£150 to £200

**Lot 3135**

(x) Ceylon1908 6c. master die proof in black on white glazed card (90 x 60mm.), endorsed 'before/ hardening' and dated '10 sep 07', fine. Subject to 5% tax on Hammer Price in addition to 20% VAT on Buyer's Premium.

Estimate  
£300 to £400

**Lot 3136**

(x) Ceylon1910 MCA set of nine to 10r., three of each value each overprinted "specimen" and affixed to archival pages and handstamped ' postes et telegraphes/ madagascar' in pink, from the Madagascar Postal archives; scarce. S.G. 292s-300s var. Subject to 5% tax on Hammer Price in addition to 20% VAT on Buyer's Premium.

Estimate  
£400 to £500

**Lot 3137**

(x) Cyprus1892-94 CA 30pa. mauve, damaged 'us', lightly mounted mint. S.G. 32a, £350. Subject to 5% tax on Hammer Price in addition to 20% VAT on Buyer's Premium.

Estimate  
£150 to £200

### Lot 3138



(x) Cyprus 1902-10 mint group comprising 1902-04 CA set to 45pi. and 1904-10 MCA set to 45pi., generally good to fine mint. S.G. 50-71, £1,000 Subject to 5% tax on Hammer Price in addition to 20% VAT on Buyer's Premium.

Estimate  
£350 to £400

### Lot 3139



(x) Cyprus 1902-04 CA 1/2pi. green and carmine, block of four from the left of the sheet variety watermark inverted, unmounted mint; a scarce multiple. S.G. 50w, £720+ Subject to 5% tax on Hammer Price in addition to 20% VAT on Buyer's Premium.

Estimate  
£300 to £400

### Lot 3140



(x) Cyprus 1904-10 MCA mint group, with at least two of each value to 45pi. and a few extra values, generally good to fine. S.G. 60-71 group, £700+ Subject to 5% tax on Hammer Price in addition to 20% VAT on Buyer's Premium.

Estimate  
£250 to £300

### Lot 3141



(x) Cyprus 1904-10 MCA 5pa. bistre and black, 10pa. orange and green (horizontal pair), 1/2pi. green and carmine (tied to piece), 30pa. purple and green, 1pi. carmine and blue, 2pi. blue and purple, 4pi. olive-green and purple, 9pi. brown and carmine and 18pi. black and brown, all variety broken top left triangle, fine used. S.G. 60a, 61c, 62a, 63b, 64a, 65a, 66a, 68b and 70a, £1,700 Subject to 5% tax on Hammer Price in addition to 20% VAT on Buyer's Premium.

Estimate  
£700 to £800



**Lot 3142**



(x) Cyprus 1904-10 MCA 5pa. bistre and black, 10pa. orange and green, 1/2pi. green and carmine, 2pi. blue and purple and 4pi. olive-green and purple, all with variety broken top left triangle, fine used. S.G. 60a, 61c, 62a, 65a and 66a, £790 Subject to 5% tax on Hammer Price in addition to 20% VAT on Buyer's Premium.

Estimate  
£350 to £400

**Lot 3143**



(x) Cyprus 1904-10 MCA 10pa. orange and green block of thirty from the right of the sheet, 1/2pi. green and carmine block of thirty from the upper right corner of the sheet with plate number '1' and 30pa. purple and green block of fifteen from the foot of the sheet with plate number '1'; a couple of minor tone spots on the reverse of the two larger blocks otherwise fine and with full original gum. S.G. 61-63, £1,100+ Subject to 5% tax on Hammer Price in addition to 20% VAT on Buyer's Premium.

Estimate  
£300 to £400

**Lot 3144**



(x) Cyprus 1904-10 MCA 9pi. brown and carmine, variety watermark inverted, lightly mounted mint. S.G. 68aw, £325 Subject to 5% tax on Hammer Price in addition to 20% VAT on Buyer's Premium.

Estimate  
£180 to £200

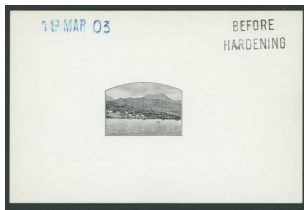
**Lot 3145**



(x) Cyprus 1904-10 MCA 18pi. black and brown, variety broken top left triangle, fine used. S.G. 70a, £375 Subject to 5% tax on Hammer Price in addition to 20% VAT on Buyer's Premium.

Estimate  
£150 to £200

### Lot 3146



(x) Dominica 1903 'Roseau' vignette only die proof in black on white glazed card (90 x 60mm.), endorsed 'before/ hardening' and dated '19 mar. 03'; fine provenance: "Beaver Creek", Phillips, 1988 Spink, November 2017 Subject to 5% tax on Hammer Price in addition to 20% VAT on Buyer's Premium.

Estimate  
£400 to £500

### Lot 3147



(x) Dominica 1903-07 CC set of eleven (two 2/6d.) to 5/- each overprinted "specimen", lightly mounted mint. S.G. 27s-36s, £200 Subject to 5% tax on Hammer Price in addition to 20% VAT on Buyer's Premium.

Estimate  
£100 to £150

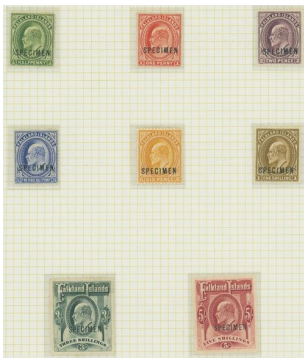
### Lot 3148



(x) Dominica 1907-08 MCA 5/- black and brown, a block of four and a single example with plate number '1'; fine and fresh mint. S.G. 46 Subject to 5% tax on Hammer Price in addition to 20% VAT on Buyer's Premium.

Estimate  
£300 to £400

### Lot 3149



(x) Falkland Islands 1904-12 1/2d. to 5/- set of eight, each overprinted "specimen", large part original gum. S.G. 43s-50s, £600 Subject to 5% tax on Hammer Price in addition to 20% VAT on Buyer's Premium.

Estimate  
£300 to £350

### Lot 3150



(x) Falkland Islands 1904-07 set of eight to 5/-, and with 1d. blocks of four (2) in addition; fine mint. S.G. 43-50 etc., £540+ Subject to 5% tax on Hammer Price in addition to 20% VAT on Buyer's Premium.

Estimate  
£200 to £250

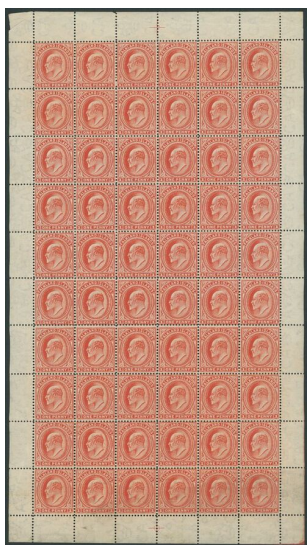
**Lot 3151**



(x) Falkland Islands 1904-12 Watermark Multiple Crown CA1½d. yellow-green, variety watermark inverted, large part original gum. S.G. 43aw, £700 Subject to 5% tax on Hammer Price in addition to 20% VAT on Buyer's Premium.

Estimate  
£300 to £400

**Lot 3152**



(x) Falkland Islands 1904-12 1d. vermilion, a complete sheet of sixty with margins on all sides; full original gum, a few peripheral bends but generally good to fine. S.G. 44, £1,080 Subject to 5% tax on Hammer Price in addition to 20% VAT on Buyer's Premium.

Estimate  
£100 to £150

**Lot 3153**



(x) Falkland Islands 1904-12 Watermark Multiple Crown CA1d. vermilion horizontal pair tied to envelope by 'south/ georgia' c.d.s. cancels and with 'south georgia' handstamp in black below each; fine and scarce. B.P.A. Certificate (1948). S.G. 44 Subject to 5% tax on Hammer Price in addition to 20% VAT on Buyer's Premium.

Estimate  
£500 to £600

**Lot 3154**



(x) Falkland Islands 1904-12 Watermark Multiple Crown CA1d. vermilion, watermark reversed, used with part light cancellation at foot. S.G. 44ax, £650 Subject to 5% tax on Hammer Price in addition to 20% VAT on Buyer's Premium.

Estimate  
£300 to £400

**Lot 3155**



(x) Falkland Islands 1904-12 Watermark Multiple Crown CA1d. dull coppery red, block of four, lightly mounted mint; a scarce multiple. B.P.A. Certificate (1986). S.G. 44d, £900+ Subject to 5% tax on Hammer Price in addition to 20% VAT on Buyer's Premium.

Estimate  
£400 to £500

**Lot 3156**



(x) Falkland Islands 1904-12 Watermark Multiple Crown CA2d. purple, variety watermark reversed, horizontal pair from the right of the sheet with the margin showing clearly the variety, fine mint. S.G. 45ax, £500+ Subject to 5% tax on Hammer Price in addition to 20% VAT on Buyer's Premium.

Estimate  
£300 to £400

**Lot 3157**



(x) Falkland Islands 1904-12 Watermark Multiple Crown CA2d. purple, variety watermark reversed, large part original gum; fine. S.G. 45ax, £250 Subject to 5% tax on Hammer Price in addition to 20% VAT on Buyer's Premium.

Estimate  
£100 to £150

**Lot 3158**



(x) Falkland Islands 1904-12 Watermark Multiple Crown CA2d. purple, watermark reversed, a used example. S.G. 45ax, £225 Subject to 5% tax on Hammer Price in addition to 20% VAT on Buyer's Premium.

Estimate  
£100 to £150



**Lot 3159**



**(x) Falkland Islands 1904-12 Watermark Multiple Crown CA2½d. ultramarine, watermark inverted, large part original gum; fine. S.G. 46aw, £750** Subject to 5% tax on Hammer Price in addition to 20% VAT on Buyer's Premium.

**Estimate  
£200 to £300**

**Lot 3160**



**(x) Falkland Islands 1904-12 Watermark Multiple Crown CA6d. orange, a block of fifteen from the upper left corner of the sheet; fine unmounted mint, a lovely multiple. S.G. 47** Subject to 5% tax on Hammer Price in addition to 20% VAT on Buyer's Premium.

**Estimate  
£400 to £500**

**Lot 3161**



**(x) Falkland Islands 1904-12 Watermark Multiple Crown CA3/- green and 5/- red, each in a marginal block of four; the 3/- unmounted and the 5/- lightly mounted mint, very fine. S.G. 49-50, £1,660** Subject to 5% tax on Hammer Price in addition to 20% VAT on Buyer's Premium.

**Estimate  
£600 to £800**

**Lot 3162**



**(x) Falkland Islands 1933 Centenary part set to 1/-, each in a horizontal pair from the foot of the sheet with full imprint, full original gum. S.G. 127-134, £500+** Subject to 5% tax on Hammer Price in addition to 20% VAT on Buyer's Premium.

**Estimate  
£250 to £350**

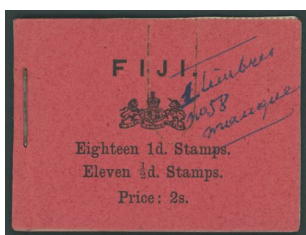
**Lot 3163**



(x) Falkland Islands 1933 Centenary 10/- black and chestnut, lightly mounted mint. S.G. 137, £900 Subject to 5% tax on Hammer Price in addition to 20% VAT on Buyer's Premium.

Estimate  
£400 to £500

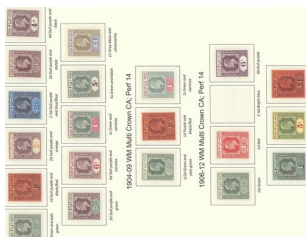
**Lot 3164**



(x) Fiji 1909 2/- booklet with black and pink cover, some pen notations on cover and perfs. trimmed at foot, one incomplete pane of 1/2d. otherwise a fine and rare booklet. S.G. SB1, £4,000 Subject to 5% tax on Hammer Price in addition to 20% VAT on Buyer's Premium.

Estimate  
£600 to £800

**Lot 3165**



(x) Fiji 1903-12 mint group on album pages comprising 1903 CA set to £1, 1904-09 MCA 1/2d. to 1/- set of three, 1906-12 set of six to £1, and a variety of blocks of four: 1903 1/2d., 1d., 2d., 2 1/2d., 1/- and 5/-, 1904-09 1/2d. and 1d. and 1906-11 1d., 2 1/2d. and 6d.; generally fine. S.G. cat. value £1,800+ Subject to 5% tax on Hammer Price in addition to 20% VAT on Buyer's Premium.

Estimate  
£400 to £500

**Lot 3166**



(x) Fiji 1904-09 MCA 1d. purple and black on red, damaged frame and crown, lightly mounted mint. S.G. 116a, £450 Subject to 5% tax on Hammer Price in addition to 20% VAT on Buyer's Premium.

Estimate  
£180 to £220

**Lot 3167**



(x) Fiji1906-12 MCA 2½d. bright blue, variety damaged frame and crown, fine mint. S.G. 120 var. Subject to 5% tax on Hammer Price in addition to 20% VAT on Buyer's Premium.

Estimate  
£100 to £150

**Lot 3168**



(x) Gambia1898-1902 CA 1d. carmine, variety malformed 's', large part original gum. S.G. 38a, £425 Subject to 5% tax on Hammer Price in addition to 20% VAT on Buyer's Premium.

Estimate  
£180 to £220

**Lot 3169**



(x) Gambia1902-05 1/6d. duty plate die proof in black on white glazed card (90 x 60mm.) dated '10 feb. 05' in blue, fine Subject to 5% tax on Hammer Price in addition to 20% VAT on Buyer's Premium.

Estimate  
£300 to £400

**Lot 3170**



(x) Gambia1902-05 CA set of twelve, large part original gum. S.G. 45-56, £250 Subject to 5% tax on Hammer Price in addition to 20% VAT on Buyer's Premium.

Estimate  
£100 to £150

**Lot 3171**



(x) Gambia1902-05 CA 1d. carmine and 4d. brown and ultramarine, both variety dented frame, slightly soiled and the 4d. with light gum bend; also 1904-06 MCA 1d. carmine with dented frame, used. S.G. 46a, 50a and 58a, £680 Subject to 5% tax on Hammer Price in addition to 20% VAT on Buyer's Premium.

Estimate  
£250 to £300

**Lot 3172**



(x) Gambia 1902-05 CA 2d. orange and mauve, variety dented frame, lightly mounted mint. S.G. 47a, £225 Subject to 5% tax on Hammer Price in addition to 20% VAT on Buyer's Premium.

Estimate  
£100 to £150

**Lot 3173**



(x) Gambia 1902-05 CA 2d. orange and mauve and 1909 MCA 5d. orange and purple, both with dented frame, the latter with horizontal gum bend, large part original gum. S.G. 47a, 77a, £475 Subject to 5% tax on Hammer Price in addition to 20% VAT on Buyer's Premium.

Estimate  
£180 to £220

**Lot 3174**



(x) Gambia 1902-05 CA 6d. pale sage-green and carmine, variety dented frame, large part original gum. S.G. 51a, £375 Subject to 5% tax on Hammer Price in addition to 20% VAT on Buyer's Premium.

Estimate  
£150 to £200

**Lot 3175**

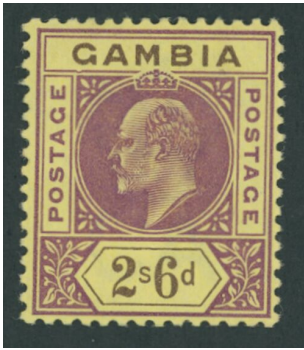


(x) Gambia 1902-05 CA 1/6d. green and carmine on yellow, variety dented frame, large part original gum. S.G. 53a, £400 Subject to 5% tax on Hammer Price in addition to 20% VAT on Buyer's Premium.

Estimate  
£200 to £250



Lot 3176



(x) Gambia1902-05 2/6d. purple and brown on yellow, variety dented frame, some paper adhesion on reverse, part original gum. S.G. 55a, £500Subject to 5% tax on Hammer Price in addition to 20% VAT on Buyer's Premium.

Estimate  
£200 to £300

Lot 3177



(x) Gambia1904-06 MCA 5d. grey and black, variety dented frame, large part original gum. S.G. 63a, £475Subject to 5% tax on Hammer Price in addition to 20% VAT on Buyer's Premium.

Estimate  
£200 to £300

Lot 3178



(x) Gambia1904-06 MCA 7½d. green and carmine, variety dented frame, large part original gum. S.G. 65a, £500Subject to 5% tax on Hammer Price in addition to 20% VAT on Buyer's Premium.

Estimate  
£200 to £250

Lot 3179



(x) Gambia1904-06 MCA 2/- deep slate and orange, variety dented frame, large part original gum, horizontal crease; scarce. S.G. 68a, £1,000Subject to 5% tax on Hammer Price in addition to 20% VAT on Buyer's Premium.

Estimate  
£300 to £400

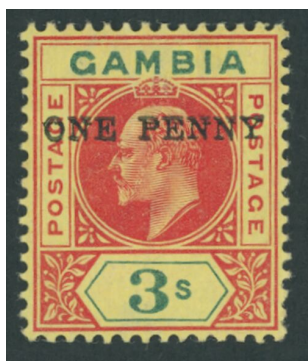
**Lot 3180**



(x) Gambia1906 1d. on 3/- carmine and green on yellow, variety surcharge double, small tone spot on reverse otherwise fine mint. B.P.A. Certificate 92007). S.G. 70a, £1,800 Subject to 5% tax on Hammer Price in addition to 20% VAT on Buyer's Premium.

Estimate  
£700 to £900

**Lot 3181**



(x) Gambia1906 1d. on 3/- carmine and green on yellow, variety surcharge double, some ink offset on reverse, large part original gum. S.G. 70a, £1,800 Subject to 5% tax on Hammer Price in addition to 20% VAT on Buyer's Premium.

Estimate  
£600 to £800

**Lot 3182**



(x) Gambia1909 MCA 1d. carmine, a complete pane of sixty with margins on three sides and plate number '1' at top and foot, showing variety dented frame [1/6], full original gum. S.G. 73, 73a, £1,437 Subject to 5% tax on Hammer Price in addition to 20% VAT on Buyer's Premium.

Estimate  
£400 to £600

**Lot 3183**



(x) Gambia1909 MCA 2d. greyish slate and 6d. dull and bright purple, both variety dented frame, large part original gum. S.G. 74a, 78a, £450 Subject to 5% tax on Hammer Price in addition to 20% VAT on Buyer's Premium.

Estimate  
£200 to £250

**Lot 3184**



(x) Gambia1909 MCA 5d. orange and purple, variety dented frame, diagonal gum bend, lightly mounted mint. S.G. 77a, £250 Subject to 5% tax on Hammer Price in addition to 20% VAT on Buyer's Premium.

Estimate  
£100 to £150

**Lot 3185**



(x) Gambia1909 MCA 2/- purple and bright blue on blue, variety dented frame, apparently unmounted mint, very fine. S.G. 83a, £450 Subject to 5% tax on Hammer Price in addition to 20% VAT on Buyer's Premium.

Estimate  
£200 to £250

**Lot 3186**



(x) Gambia1921-22 Script 4/- black and red, a block of twelve from the lower right corner of the sheet with watermark inverted and plate number '1'; fine unmounted mint. S.G. 117w, £1,080+ Subject to 5% tax on Hammer Price in addition to 20% VAT on Buyer's Premium.

Estimate  
£500 to £700

**Lot 3187**



(x) GibraltarGreat Britain Used in Gibraltar1858 (25 Apr.) envelope to Calcutta via Alexandria bearing 1858 2d. blue pair, TF-TG, tied by 'G' in oval of bars (Type Z2) with Gibraltar c.d.s below; 1874 (15 Apr.) entire to Genoa bearing 1857 1d. red (2) tied by 'a26' duplex (Type Z5) and with Italy 40c. Postage Due affixed and cancelled with 'genova' c.d.s. Subject to 5% tax on Hammer Price in addition to 20% VAT on Buyer's Premium.

Estimate  
£200 to £250

**Lot 3188**



(x) Gibraltar1886-87 CA 1/2d. to 1/- set of seven, large part original gum. S.G. 8-14, £600 Subject to 5% tax on Hammer Price in addition to 20% VAT on Buyer's Premium.

Estimate  
£150 to £200



### Lot 3189



(x) Gibraltar 1889 Surcharge set to 75c. on 1/- (a few values toned) and 1912-24 MCA set of ten to £1, each overprinted "specimen", large part original gum, fine. S.G. 15s-21s, 76s-85s, £925 Subject to 5% tax on Hammer Price in addition to 20% VAT on Buyer's Premium.

Estimate  
£250 to £300

### Lot 3190



(x) Gibraltar 1903-11 mint group on album pages comprising 1903 CA set to £1, 1904-08 MCA set to £1 and 1906-11 MCA set to 4/-; fine mint. S.G. 46-74, £2,500 Subject to 5% tax on Hammer Price in addition to 20% VAT on Buyer's Premium.

Estimate  
£600 to £800

### Lot 3191



(x) Gibraltar 1903 CA 2½d. dull purple and black on blue, variety large '2' in '½', large part original gum, fine. S.G. 49a, £325 Subject to 5% tax on Hammer Price in addition to 20% VAT on Buyer's Premium.

Estimate  
£150 to £200

### Lot 3192



(x) Gibraltar 1904-08 MCA 1d. dull purple on red, watermark inverted, used. S.G. 57bw, £950 Subject to 5% tax on Hammer Price in addition to 20% VAT on Buyer's Premium.

Estimate  
£350 to £400



**Lot 3193**



(x) Gold Coast 1889-94 CA 20/- green and red, large part original gum; fine and fresh. Heinrich Kohler Certificate (1940). S.G. 24, £3,750 Subject to 5% tax on Hammer Price in addition to 20% VAT on Buyer's Premium.

Estimate  
£800 to £1,200

**Lot 3194**



(x) Gold Coast 1902 CA ½d. to 20/- set of eleven, overprinted "specimen", each in a vertical pair; fine and fresh. S.G. 38s-48s, £700 Subject to 5% tax on Hammer Price in addition to 20% VAT on Buyer's Premium.

Estimate  
£200 to £300

**Lot 3195**



(x) Gold Coast 1904-06 MCA 6d. dull purple and violet, variety damaged frame and crown, large part original gum. S.G. 54ab, £600 Subject to 5% tax on Hammer Price in addition to 20% VAT on Buyer's Premium.

Estimate  
£250 to £300

**Lot 3196**



(x) Gold Coast 1904-06 MCA 2/6d. green and yellow, variety damaged frame and crown, short perf at top, lightly mounted mint. S.G. 57a, £475 Subject to 5% tax on Hammer Price in addition to 20% VAT on Buyer's Premium.

Estimate  
£250 to £300

**Lot 3197**

(x) Gold Coast 1907-13 MCA 1/2d. dull green, a block of six from the upper right of the sheet showing variety damaged frame and crown [1/3], full original gum, an attractive positional piece. S.G. 59, 59a, £270+Subject to 5% tax on Hammer Price in addition to 20% VAT on Buyer's Premium.

Estimate  
£150 to £200

**Lot 3198**

(x) Gold Coast 1907-13 MCA 1/2d. dull green, variety damaged frame and crown [1/3], lightly mounted mint. S.G. 59a, £200Subject to 5% tax on Hammer Price in addition to 20% VAT on Buyer's Premium.

Estimate  
£80 to £100

**Lot 3199**

(x) Gold Coast 1907-13 MCA 1/- black on green, variety damaged frame and crown, a couple of pulled perfs otherwise fine, large part original gum. S.G. 65a, £475Subject to 5% tax on Hammer Price in addition to 20% VAT on Buyer's Premium.

Estimate  
£200 to £250

**Lot 3200**

(x) Grenada 1902 CA 1/2d. to 10/- set of ten, each overprinted "specimen", generally fine. S.G. 57s-66s, £200Subject to 5% tax on Hammer Price in addition to 20% VAT on Buyer's Premium.

Estimate  
£100 to £150

**Lot 3201**

(x) Grenada 1902 CA 1/2d. to 10/- set of ten each overprinted "specimen" and affixed to archival page and additionally handstamped 'collection / de/ berne/ madagascar' in pink; fine and rare. S.G. 57s-66s var.Subject to 5% tax on Hammer Price in addition to 20% VAT on Buyer's Premium.

Estimate  
£600 to £700

### Lot 3202



(x) Grenada 1904-06 MCA set of ten to 10/-, generally fine mint. S.G. 67-76, £450 Subject to 5% tax on Hammer Price in addition to 20% VAT on Buyer's Premium.

Estimate  
£200 to £250

### Lot 3203



(x) Grenada 1904-06 MCA set of ten to 10/-, lightly mounted mint. S.G. 67-76, £450 Subject to 5% tax on Hammer Price in addition to 20% VAT on Buyer's Premium.

Estimate  
£200 to £250

### Lot 3204



(x) Grenada 1908-11 MCA 3d., 6d., 2/-, 5/- and 10/- each in a vertical strip of three overprinted "specimen", large part original gum. 84s-88s Subject to 5% tax on Hammer Price in addition to 20% VAT on Buyer's Premium.

Estimate  
£250 to £300

### Lot 3205



(x) Hong Kong 1912-21 MCA 50c. black on blue green with olive back, large part original gum; fine and scarce. B.P.A. Certificate (2004). S.G. 111b, £1,400 Subject to 5% tax on Hammer Price in addition to 20% VAT on Buyer's Premium.

Estimate  
£500 to £700

### Lot 3206



(x) Hong Kong 1903-11 mint group on album pages comprising 1903 CA part set to \$5 (no \$2), 1904-06 MCA part set to \$5 (no 4c., 20c., 30c.) and 1907-11 MCA set to \$2, large part original gum. S.G. cat value £4,500+ Subject to 5% tax on Hammer Price in addition to 20% VAT on Buyer's Premium.

Estimate  
£1,200 to £1,500

Lot 3207



(x) Hong Kong 1903 CA \$10 slate and orange on blue, fine and fresh mint. S.G. 76, £1,400 Subject to 5% tax on Hammer Price in addition to 20% VAT on Buyer's Premium.

Estimate  
£600 to £800

Lot 3208



(x) Hong Kong 1904-06 MCA \$3 slate and dull blue, apparently unmounted; fine. S.G. 88, £375 Subject to 5% tax on Hammer Price in addition to 20% VAT on Buyer's Premium.

Estimate  
£150 to £200

Lot 3209



(x) Hong Kong 1907-11 MCA 2c. deep green, variety watermark inverted, used by clear 'victoria' c.d.s., fine. S.G. 92w, £900 Subject to 5% tax on Hammer Price in addition to 20% VAT on Buyer's Premium.

Estimate  
£300 to £350

Lot 3210



(x) India 1826 Entire from Cawnpore to Calcutta written to John Pearson, the Advocate General in Calcutta, bearing large double circle 'cawnpore post office/ p.st p.d./18' in black (Giles 4), red framed 'calcutta/ g.p.o./ 28 no 28/ 1826' date stamp and boxed 'am' in red all on the reverse; the letter refers to Lords Cambermere and Amherst and is concerned with military and domestic matters Subject to 5% tax on Hammer Price in addition to 20% VAT on Buyer's Premium.

Estimate  
£300 to £400



**Lot 3211**

(x) India 1852 ½a. blue 'Scinde Dawk', cancelled by indistinct handstamp, large margins on three sides and just cut into at left, some soiling and thinning in places, still a desirable example of this rarity. S.G. S2, £11,000 Subject to 5% tax on Hammer Price in addition to 20% VAT on Buyer's Premium.

Estimate  
£3,000 to £4,000

**Lot 3212**

(x) India 1854 Half Anna ½a., Die I, a block of four from the left of the sheet with part inscription, unused with good to large margins, generally fine Subject to 5% tax on Hammer Price in addition to 20% VAT on Buyer's Premium.

Estimate  
£600 to £800

**Lot 3213**

(x) India 1854 One Anna 1a., Die I, a marginal block of four from the left of the sheet with part inscription; unused, diagonal corner bend at lower right, otherwise fine Subject to 5% tax on Hammer Price in addition to 20% VAT on Buyer's Premium.

Estimate  
£600 to £800

**Lot 3214**

(x) India 1854 ½a. Die I, part of an exhibit collection nicely written up on pages comprising a group of used examples demonstrating the various plate flaws (17) with a range of shades including blue, pale blue, deep blue, indigo and greenish blue and an interesting selection of Stone A flaws from groups 4 to 23, generally good to fine four margin examples. S.G. 2-5 group Subject to 5% tax on Hammer Price in addition to 20% VAT on Buyer's Premium.

Estimate  
£450 to £550

**Lot 3215**

(x) India 1854 One Anna 1a., Die I, strip of four from the right of the sheet with part inscription, small nick in first stamp, repaired and thinned in a few places, still a good multiple Subject to 5% tax on Hammer Price in addition to 20% VAT on Buyer's Premium.

Estimate  
£500 to £600

### Lot 3216



(x) India 1854 One Anna 1a., Die II, block of eight from the right of the sheet with part inscription, good to large margins, unused with some minor paper wrinkles otherwise fine and an attractive multiple. Subject to 5% tax on Hammer Price in addition to 20% VAT on Buyer's Premium.

Estimate  
£1,500 to £2,000

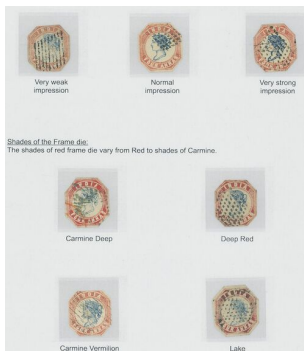
### Lot 3217



(x) India 1854 1a. Die I, part of exhibition collection written up on pages and demonstrating a range of plate flaws and comprising an unused example and a variety of shades including pale red, red, bright red and vermilion, a couple of examples present to highlight the differences in printing strength and a group of Stone A plate flaws (10); a useful and interesting display. S.G. 11/12 group. Subject to 5% tax on Hammer Price in addition to 20% VAT on Buyer's Premium.

Estimate  
£600 to £800

### Lot 3218



(x) India 1854 4a. blue and red, Second Printing (Head Die II, Frame Die I) part of exhibit collection written up on pages including three examples showing variation in the strength of the printing impression, four examples showing shades of the frame die, five examples showing variations in the placement of the head die and thirty-eight (38) examples showing various frame flaws on the twelve positions on the sheet and with enlarged copies of the frames alongside highlighting the positions of the flaws; a very useful and instructive display of good to fine examples. S.G. 19/20 group. Subject to 5% tax on Hammer Price in addition to 20% VAT on Buyer's Premium.

Estimate  
£2,200 to £2,500

### Lot 3219



(x) India 1854 Four Annas 4a., Fourth Printing, horizontal pair, cut square at top and to shape at foot, just touching the outer frameline, cancelled by two strikes of '95' in diamond of bars; a couple of stain spots and light overall toning, still an attractive multiple. S.G. 22, £2,750. Subject to 5% tax on Hammer Price in addition to 20% VAT on Buyer's Premium.

Estimate  
£800 to £1,200

**Lot 3220**



(x) India 1854 Four Annas 4a., Fourth Printing, vertical pair, cut square and just cut into the outer frameline at upper left and upper right, clear to good margins elsewhere, cancelled by two strikes of '1' diamond of bars of Bombay, overall toning still a good multiple. S.G. 23 Subject to 5% tax on Hammer Price in addition to 20% VAT on Buyer's Premium.

Estimate  
£800 to £1,200

**Lot 3221**



(x) India 1854 Four Annas 4a., Fourth Printing, cut square with large margins on three sides and just touching the outer frameline at left, cancelled by Madras "C/1" obliterator and another red postmark. B.P.A. Certificate (2012). S.G. 23 Subject to 5% tax on Hammer Price in addition to 20% VAT on Buyer's Premium.

Estimate  
£300 to £400

**Lot 3222**



(x) India 1854 Four Annas 4a., Fourth Printing, cut square with good to large margins all round, cancelled by diamond of dots, slightly toned otherwise a fine example. B.P.A. Certificate (1998). S.G. 23 Subject to 5% tax on Hammer Price in addition to 20% VAT on Buyer's Premium.

Estimate  
£300 to £400

### Lot 3223



(x) India 1854 Four Annas 4a. blue and red, Fourth Printing (Head Die III, Frame Die II) group on exhibit pages (8) demonstrating a range of head and frame retouches with detailed notes and enlarged illustrations of the head and frame with the retouches highlighted; good to fine and highly useful. S.G. 22-24 group Subject to 5% tax on Hammer Price in addition to 20% VAT on Buyer's Premium.

Estimate  
£1,200 to £1,500

### Lot 3224



(x) India 1854 2a. green, variety watermark Type 10a, horizontal pair unused without gum, large balanced margins; light crease. R.P.S. Certificate (2019). S.G. 31b, £3,000 Subject to 5% tax on Hammer Price in addition to 20% VAT on Buyer's Premium.

Estimate  
£2,000 to £2,500

### Lot 3225



GREEN  
Unused example

(x) India 1854 2a. green, part of an exhibit collection written up on pages including two unused examples in differing shades, followed by a selection of used examples in various shades including pale green, yellow green, bright green and pale grey-green, a huge examples showing the surrounding lines on all four sides and eight further examples with various cancellations; good to fine. S.G. 31/34 group Subject to 5% tax on Hammer Price in addition to 20% VAT on Buyer's Premium.

Estimate  
£400 to £500



EMERALD GREEN  
Unused example



**Lot 3226**



**(x) India 1855 (1 Oct.) Blue Glazed Paper 4a. black, very well-centred, part original gum. S.G. 35 Subject to 5% tax on Hammer Price in addition to 20% VAT on Buyer's Premium.**

**Estimate  
£300 to £400**

**Lot 3227**



**(x) India 1855 (1 Oct.) Blue Glazed Paper 4a. black, small part original gum; horizontal crease. S.G. 35, £1,500 Subject to 5% tax on Hammer Price in addition to 20% VAT on Buyer's Premium.**

**Estimate  
£250 to £300**

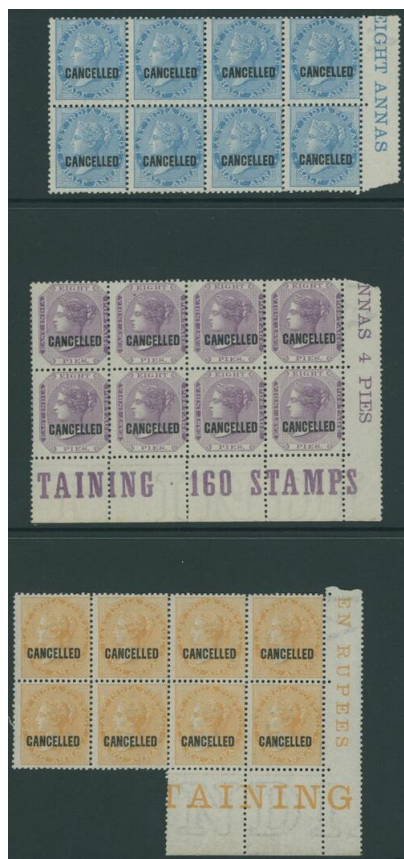
**Lot 3228**



**(x) India 1855 (1 Oct.) Blue Glazed Paper 8a. carmine, Die I, large part original gum, a few tone spots. S.G. 36, £1,200 Subject to 5% tax on Hammer Price in addition to 20% VAT on Buyer's Premium.**

**Estimate  
£250 to £300**

### Lot 3229



(x) India 1856-1900 group of mint multiples on Hagner pages including 1856-64 1/2a. blue and 1/2a. pale blue blocks of four (the blue with BPA Cert.), 1860 8p. blocks of four (3) and blocks of nine (2, one with part inscription), 1865 1a. blocks of four (3) and eight, 1874 9p. block of forty with margins on three sides etc., a good and useful group of multiples. Subject to 5% tax on Hammer Price in addition to 20% VAT on Buyer's Premium.

Estimate  
£500 to £700

### Lot 3230



(x) India 1856-64 group on an album page (11) showing Renouf Type 15 and Cooper Type 25 experimental cancellations and a few with experimental coloured cancels; scarce. Subject to 5% tax on Hammer Price in addition to 20% VAT on Buyer's Premium.

Estimate  
£100 to £150

### Lot 3231



(x) India 1856-64 4a. yellow-buff, part original gum, a few minor tone spots. S.G. 42, £1,000. Subject to 5% tax on Hammer Price in addition to 20% VAT on Buyer's Premium.

Estimate  
£250 to £300

### Lot 3232



(x) India 1856-64 prepared for use, but not officially issued 2a. yellow-green, small part original gum. S.G. 50, £4,000 Subject to 5% tax on Hammer Price in addition to 20% VAT on Buyer's Premium.

Estimate  
£1,500 to £2,000

### Lot 3233



(x) India 1858 entire to Karikal bearing 1/2a. blue tied by 'c111' cancellation of Pondicherry, Karikal arrival c.d.s. on reverse; attractive and a superb usage Subject to 5% tax on Hammer Price in addition to 20% VAT on Buyer's Premium.

Estimate  
£200 to £300

### Lot 3234



(x) India 1865 1/2a. pale blue (Die I), 8p. mauve and 2a. orange, each in a block of eight with part marginal inscription and overprinted "cancelled", almost full original gum; scarce multiples. S.G. 55, 57, 62 var. Subject to 5% tax on Hammer Price in addition to 20% VAT on Buyer's Premium.

Estimate  
£350 to £400

### Lot 3235



(x) India 1866-78 group of mint multiples on album pages, mainly blocks of four, comprising 1866 4a. green (3, shades), 6a. 8p. slate (2), 1868 8a. rose (2), 1873 1/2a. blue (2), 1874 9p. mauve (2) 1876 6a. pale brown and 12a. Venetian red; good to fine mint. S.G. cat value £2,700+ Subject to 5% tax on Hammer Price in addition to 20% VAT on Buyer's Premium.

Estimate  
£600 to £800

**Lot 3236**

(x) India 1867 (Jan.) part envelope to England bearing 8p. purple and 1866 Fiscal 6p. purple, boxed 'india paid' in red to face and transit and arrival handstamps on reverse; envelope itself quite tatty and with portions missing. S.G. 52, 66 Subject to 5% tax on Hammer Price in addition to 20% VAT on Buyer's Premium.

Estimate  
£100 to £150

**Lot 3237**

(x) India 1865 1a. deep brown, a block of thirty-two, almost full original gum; thinned on one stamp and a few very minor tone spots not affecting the appearance. S.G. 59 Subject to 5% tax on Hammer Price in addition to 20% VAT on Buyer's Premium.

Estimate  
£300 to £400

**Lot 3238**

(x) India 1865 2a. yellow, 2a. orange and 2a. brown-orange, each in a block of four; the 2a. orange with B.P.A. Certificate (2017). S.G. 61-63, £2,700 Subject to 5% tax on Hammer Price in addition to 20% VAT on Buyer's Premium.

Estimate  
£800 to £1,000

**Lot 3239**

(x) India 1865 2a. brown-orange, block of ten from the right of the sheet, large part original gum. S.G. 63, £500+ Subject to 5% tax on Hammer Price in addition to 20% VAT on Buyer's Premium.

Estimate  
£300 to £400

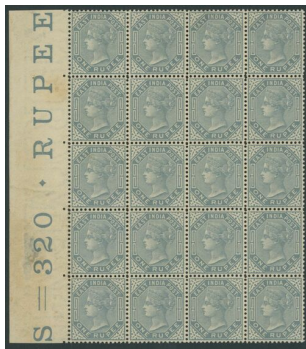
**Lot 3240**

(x) India 1873 Die II 1/2a. deep blue complete pane of eighty with full margins and inscription; fine mint. S.G. 75, £1,280 Subject to 5% tax on Hammer Price in addition to 20% VAT on Buyer's Premium.

Estimate  
£400 to £600



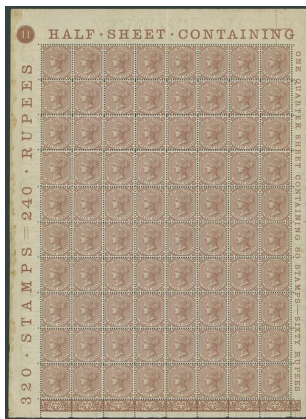
### Lot 3241



(x) India 1874 1r. slate, a block of twenty from the left of the sheet with part inscription; almost full original gum, slightly thinned in the margin only. S.G. 79, £2,000 Subject to 5% tax on Hammer Price in addition to 20% VAT on Buyer's Premium.

Estimate  
£400 to £600

### Lot 3242



(x) India 1876 12a. Venetian red, complete pane of eighty with full margins and inscriptions; fine mint. S.G. 82, £1,920+ Subject to 5% tax on Hammer Price in addition to 20% VAT on Buyer's Premium.

Estimate  
£400 to £500

### Lot 3243



(x) India 1882-1902 group of mint multiples including all values to 1r. plus shades and including 1r. block of sixteen, 1891 2½a. on 4½a. yellow-green, 1892-97 2a.6p. (2) and 1r. (2), 1898 ¼a. on ½a., 1899 3p. and 1900-02 3p, ½a. (2), 1a., 2a. and 2a.6p; generally good to fine. S.G. Cat. value £1,300+ Subject to 5% tax on Hammer Price in addition to 20% VAT on Buyer's Premium.

Estimate  
£300 to £400

### Lot 3244



(x) India 1882-90 ½a. deep blue-green, variety double impression, pre-printing paper bend, large part original gum. S.G. 85a, £1,700 Subject to 5% tax on Hammer Price in addition to 20% VAT on Buyer's Premium.

Estimate  
£800 to £1,000

**Lot 3245**



(x) India 1882-90 2a. blue, variety double impression, unused with large part toned gum; scarce. B.P.A. Certificate (1950) signed Robson Lowe etc. S.G. 92a, £3,750. Subject to 5% tax on Hammer Price in addition to 20% VAT on Buyer's Premium.

Estimate  
£1,600 to £1,800

**Lot 3246**



(x) India 1882-90 8a. magenta, block of six, mounted on one stamp only; fine. S.G. 99, £288. Subject to 5% tax on Hammer Price in addition to 20% VAT on Buyer's Premium.

Estimate  
£150 to £200

**Lot 3247**



(x) India 1892-97 1r. green and aniline carmine, a block of fifteen with full original gum; fine. S.G. 106, £420. Subject to 5% tax on Hammer Price in addition to 20% VAT on Buyer's Premium.

Estimate  
£200 to £250

**Lot 3248**



(x) India 1895 2r. colour trial in ultramarine and green, without gum; fine. Subject to 5% tax on Hammer Price in addition to 20% VAT on Buyer's Premium.

Estimate  
£300 to £400

## Lot 3249



(x) India 1895 2r. colour trial in brown and blue, without gum; fine. Subject to 5% tax on Hammer Price in addition to 20% VAT on Buyer's Premium.

Estimate  
£300 to £400

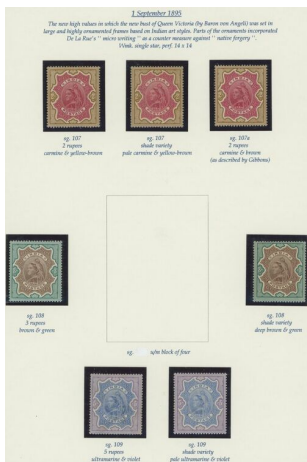
## Lot 3250



(x) India 1895 2r. carmine and brown, 3r. brown and green and 5r. ultramarine and violet, each in a block of four; the 2r. and 3r. marginal, almost full original gum. S.G. 107-109, £1,100. Subject to 5% tax on Hammer Price in addition to 20% VAT on Buyer's Premium.

Estimate  
£400 to £500

## Lot 3251



(x) India 1895 specialised group of the High Values (7) comprising 2r. carmine and yellow-brown, 2r. pale carmine and yellow-brown and 2r. carmine and brown, 3r. brown and green and 3r. deep brown and green and 5r. ultramarine and violet and 5r. pale ultramarine and violet; one 3r. slightly toned gum, otherwise good to fine. S.G. 107-109 group, £750. Subject to 5% tax on Hammer Price in addition to 20% VAT on Buyer's Premium.

Estimate  
£250 to £300

**Lot 3252**



**(x) India 1895 3r. brown and green, block of six from the right of the sheet with margins on three sides, full original gum. S.G. 108, £510+Subject to 5% tax on Hammer Price in addition to 20% VAT on Buyer's Premium.**

**Estimate  
£250 to £300**

**Lot 3253**



**(x) India 1898 1/4a. on 1/2a. blue-green, variety surcharge double, interpanneau margin at top, full original slightly toned gum; fine. B.P.A. Certificate (1949). S.G. 110a, £750 Subject to 5% tax on Hammer Price in addition to 20% VAT on Buyer's Premium.**

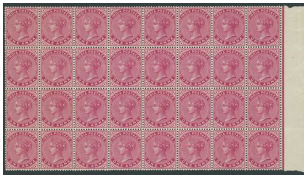
**Estimate  
£350 to £400**



**Lot 3254**

(x) India 1898 1/4a. on 1/2a. blue-green, variety double impression of stamp, mint from the foot of the sheet, fine. S.G. 110b, £750 Subject to 5% tax on Hammer Price in addition to 20% VAT on Buyer's Premium.

Estimate  
£300 to £350

**Lot 3255**

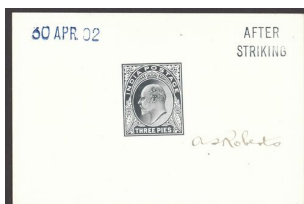
(x) India 1900-02 1a. carmine, block of thirty-two from the right of the sheet; unmounted mint, minor creases in places otherwise fine. S.G. 115, £208+ Subject to 5% tax on Hammer Price in addition to 20% VAT on Buyer's Premium.

Estimate  
£100 to £150

**Lot 3256**

(x) India 1902-11 Die Proofs Head die proof with uncleared surround in black on white glazed card (60 x 90mm.), dated '3 oct. 01' and endorsed 'before/hardening'; manuscript 'Original/ no. 7 India' in black ink at foot; soiled and creased, nevertheless rare Subject to 5% tax on Hammer Price in addition to 20% VAT on Buyer's Premium.

Estimate  
£400 to £500

**Lot 3257**

(x) India 1902-11 Die Proofs 3p. die proof in black on white glazed card (60 x 90mm.), dated '30 apr. 02' and endorsed 'after/ striking', signed 'a s Roberts' in manuscript; fine Subject to 5% tax on Hammer Price in addition to 20% VAT on Buyer's Premium.

Estimate  
£400 to £500

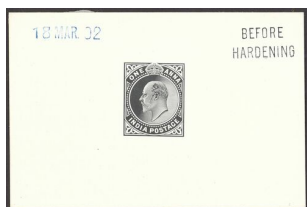
### Lot 3258



(x) India 1902-11 Die Proofs 1/2a. die proof in black on white glazed card (90 x 60mm.), dated '28 JAN. 02' and endorsed 'before/ hardening', fine Subject to 5% tax on Hammer Price in addition to 20% VAT on Buyer's Premium.

Estimate  
£400 to £500

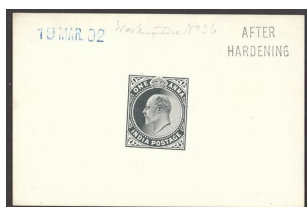
### Lot 3259



(x) India 1902-11 Die Proofs 1a. die proof in black on white glazed card (90 x 60mm.) dated '18 MAR. 02' and endorsed 'before/ hardening', fine Subject to 5% tax on Hammer Price in addition to 20% VAT on Buyer's Premium.

Estimate  
£400 to £500

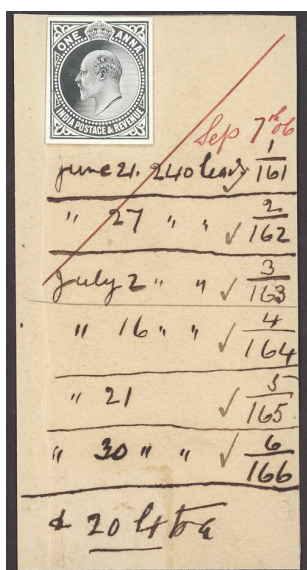
### Lot 3260



(x) India 1902-11 Die Proofs 1a. die proof in black on white glazed card (90 x 60mm.) dated '19 MAR. 02' and endorsed 'after/ hardening', 'Working Die No. 36' in pencil at top, fine Subject to 5% tax on Hammer Price in addition to 20% VAT on Buyer's Premium.

Estimate  
£400 to £500

### Lot 3261



(x) India 1902-11 Die Proofs 1a. stamp sized die proof affixed to piece from De la Rue record book (54 x 106mm.), dated 'Sep 7th 06' in red and with details of the printing leads below in black; fine and rare Subject to 5% tax on Hammer Price in addition to 20% VAT on Buyer's Premium.

Estimate  
£400 to £500

### Lot 3262



(x) India 1902-11 Die Proofs 1a. stamp sized die proof in black on thin white card, affixed to larger buff card (86 x 57mm.), fine Subject to 5% tax on Hammer Price in addition to 20% VAT on Buyer's Premium.

Estimate  
£350 to £400

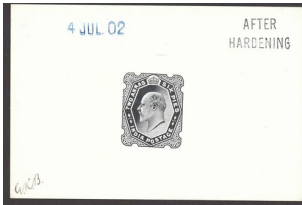
**Lot 3263**



(x) India1902-11 Die Proofs2a. die proof in black on white glazed card (90 x 60mm.) dated '2 jun. 02' and endorsed 'before/ hardening', fineSubject to 5% tax on Hammer Price in addition to 20% VAT on Buyer's Premium.

Estimate  
£400 to £500

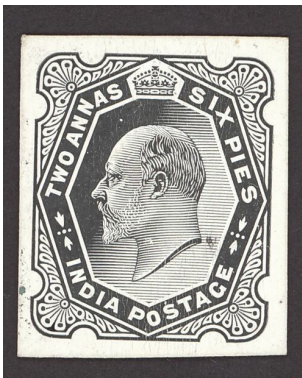
**Lot 3264**



(x) India1902-11 Die Proofs2a.6p. die proof in black on white glazed card, dated '4 jul. 02' and endorsed 'after/ hardening', initialled in lower left corner 'G.K.B.' in black manuscript; fineSubject to 5% tax on Hammer Price in addition to 20% VAT on Buyer's Premium.

Estimate  
£400 to £500

**Lot 3265**



(x) India1902-11 Die Proofs2a.6p. stamp sized die proof in black on thin paper affixed to white card; small 'e.f.h./ harpenden' handstamp on reverse, fineSubject to 5% tax on Hammer Price in addition to 20% VAT on Buyer's Premium.

Estimate  
£300 to £400

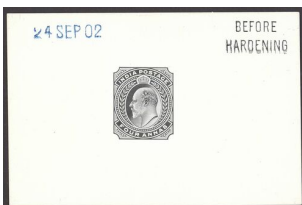
**Lot 3266**



(x) India1902-11 Die Proofs3a. die proof in black on white glazed card (90 x 60mm.), dated '20 jun. 02' and endorsed 'before/ hardening', fineSubject to 5% tax on Hammer Price in addition to 20% VAT on Buyer's Premium.

Estimate  
£400 to £500

**Lot 3267**



(x) India1902-11 Die Proofs4a. die proof in black on white glazed card (60 x 90mm.) dated '24 sep 02' and endorsed 'before/ hardening'; fineSubject to 5% tax on Hammer Price in addition to 20% VAT on Buyer's Premium.

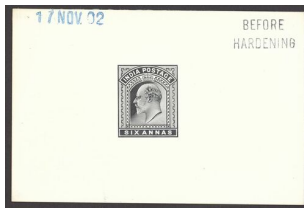
Estimate  
£400 to £500

**Lot 3268**



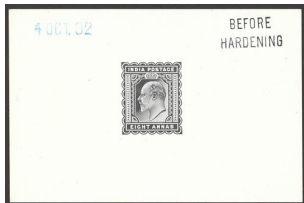
(x) India1902-11 Die Proofs4a. plate proof pair in black on thin buff card, creasedSubject to 5% tax on Hammer Price in addition to 20% VAT on Buyer's Premium.

Estimate  
£80 to £100

**Lot 3269**

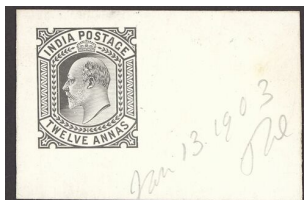
(x) India 1902-11 Die Proofs 6a. die proof in black on white glazed card (60 x 90mm.), dated '17 nov. 02' and endorsed 'before/ hardening'; fine Subject to 5% tax on Hammer Price in addition to 20% VAT on Buyer's Premium.

Estimate  
£400 to £500

**Lot 3270**

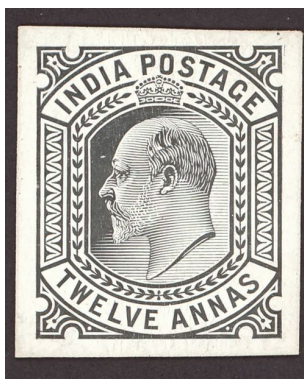
(x) India 1902-11 Die Proofs 8a. die proof in black on white glazed card (60 x 90mm.) dated '4 oct. 02' and endorsed 'before/ hardening'; fine Subject to 5% tax on Hammer Price in addition to 20% VAT on Buyer's Premium.

Estimate  
£400 to £500

**Lot 3271**

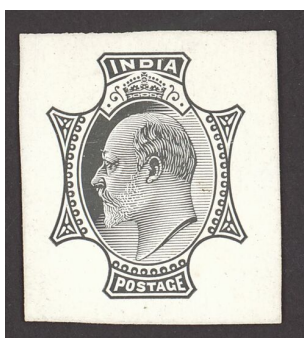
(x) India 1902-11 Die Proofs 12a. die proof in black on thin white card (50 x 35mm.), endorsed 'Jan. 13. 1903' and signed in pencil; fine Subject to 5% tax on Hammer Price in addition to 20% VAT on Buyer's Premium.

Estimate  
£350 to £400

**Lot 3272**

(x) India 1902-11 Die Proofs 12a. stamp sized die proof in black on thin paper affixed to white card; small 'e.f.h./ harpenden' handstamp on reverse, fine Subject to 5% tax on Hammer Price in addition to 20% VAT on Buyer's Premium.

Estimate  
£300 to £400

**Lot 3273**

(x) India 1902-11 Die Proofs Vignette for the 1r. values in black on thin paper affixed to white card, small 'e.f.h./ harpenden' handstamp on reverse; fine Subject to 5% tax on Hammer Price in addition to 20% VAT on Buyer's Premium.

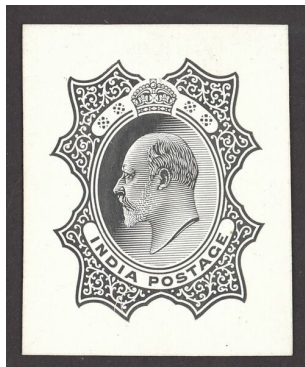
Estimate  
£300 to £400



**Lot 3274**

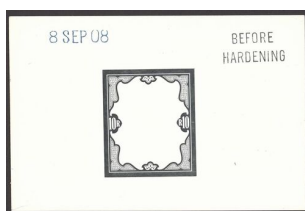
(x) India 1902-11 Die Proofs Vignette die proof as used for the large format 2r. to 25r. values, in black on white glazed card (60 x 90mm.), dated '19 nov. 02' and endorsed 'after/hardening', signed in manuscript at lower left; fine Subject to 5% tax on Hammer Price in addition to 20% VAT on Buyer's Premium.

Estimate  
£400 to £500

**Lot 3275**

(x) India 1902-11 Die Proofs Vignette for the large format 2r. to 25r. values, in black on thin white card; fine Subject to 5% tax on Hammer Price in addition to 20% VAT on Buyer's Premium.

Estimate  
£400 to £500

**Lot 3276**

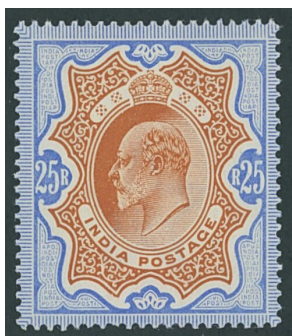
(x) India 1902-11 Die Proofs 10r. frame only die proof in black on white glazed card (60 x 90mm.) dated '8 sep 08' and endorsed 'before/hardening'; fine Subject to 5% tax on Hammer Price in addition to 20% VAT on Buyer's Premium.

Estimate  
£400 to £500

**Lot 3277**

(x) India 1902-11 almost complete group of twenty-seven to 15r. including shades, along with 3p, 1/2a., 1a., '1/4' on 1/2a., 2a., 2a.6p. and 12a. values in blocks of four, etc.; fine, large part original gum. S.G. 119-147 group, £2,000+ Subject to 5% tax on Hammer Price in addition to 20% VAT on Buyer's Premium.

Estimate  
£800 to £1,000

**Lot 3277A**

(x) India 1902-11 Watermark Star 25r. brownish orange and blue, well-centred and fresh, lightly mounted mint. S.G. 147, £3,000 Subject to 5% tax on Hammer Price in addition to 20% VAT on Buyer's Premium.

Estimate  
£800 to £1,200

**Lot 3278**

(x) India1902-11 mint group of blocks of four comprising 3p. grey to 1r. green and scarlet (18, no 4a. olive-brown), 1905 ½a. on ½a. green and 1906-047 ½a. and 1a. blocks of four; fine and fresh mint. S.G. 119-129, 131-137, 148-150, £1,000+Subject to 5% tax on Hammer Price in addition to 20% VAT on Buyer's Premium.

Estimate  
£500 to £700

**Lot 3279**

(x) India1902-113p. to 1r. group of eleven "Colour Standards" each overprinted "cancelled", lightly mounted to page; fine and rare. See Specimen Stamps of the British Empire by Marcus Samuel, pg. 10 and 15Subject to 5% tax on Hammer Price in addition to 20% VAT on Buyer's Premium.

Estimate  
£300 to £350

**Lot 3280**

(x) India1902-112r. carmine and yellow-brown, 3r. brown and green, 3r. red-brown and green, 5r. ultramarine and violet, 10r. green and carmine and 15r. blue and olive-brown, each a corner marginal example, the 10r. with toned gum, otherwise generally fine mint. S.G. 139-146 group, £1,320Subject to 5% tax on Hammer Price in addition to 20% VAT on Buyer's Premium.

Estimate  
£500 to £600

**Lot 3281**

(x) India1902-11 2r. to 15r. part set of five, large part original gum, 5r. with some ink offset on the reverse. S.G. 139-146, £1,300+Subject to 5% tax on Hammer Price in addition to 20% VAT on Buyer's Premium.

Estimate  
£400 to £500

**Lot 3282**

(x) India1902-11 2r. to 15r. group of postally used examples and 25r. brownish-orange and blue with Telegraphic cancellation; a good used group. S.G. 139-147 groupSubject to 5% tax on Hammer Price in addition to 20% VAT on Buyer's Premium.

Estimate  
£150 to £200

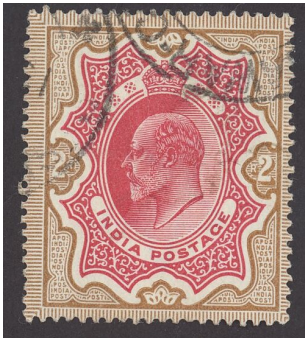
**Lot 3283**



(x) India1902-112r. carmine and yellow-brown, variety watermark inverted, lightly mounted mint, rare. S.G. 139w, £2,500Subject to 5% tax on Hammer Price in addition to 20% VAT on Buyer's Premium.

Estimate  
£1,200 to £1,500

**Lot 3284**



(x) India1902-112r. carmine and yellow-brown, variety watermark inverted, a fine used example. S.G. 139w, £1,000Subject to 5% tax on Hammer Price in addition to 20% VAT on Buyer's Premium.

Estimate  
£600 to £800

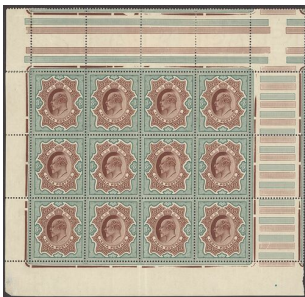
**Lot 3285**



(x) India1902-113r. brown and green, block of four; lightly mounted mint; slightly toned. S.G. 140, £320+Subject to 5% tax on Hammer Price in addition to 20% VAT on Buyer's Premium.

Estimate  
£150 to £200

**Lot 3286**



(x) India1902-11 3r. red-brown and green, lower-left pane of twelve with interpanneau margins at top and right, some perf. reinforcement in the margins only, the stamps unmounted mint; a scarce multiple. S.G. 141, £1,200+Subject to 5% tax on Hammer Price in addition to 20% VAT on Buyer's Premium.

Estimate  
£1,000 to £1,500



**Lot 3287**



(x) India1902-113r. red-brown and green, block of six, slight crease at top due to hinge removal; toned original gum. S.G. 141, £600+Subject to 5% tax on Hammer Price in addition to 20% VAT on Buyer's Premium.

Estimate  
£300 to £400

**Lot 3288**



(x) India1902-113r. red-brown and green, block of four; unmounted slightly toned gum. S.G. 141, £400+Subject to 5% tax on Hammer Price in addition to 20% VAT on Buyer's Premium.

Estimate  
£200 to £250

**Lot 3289**



(x) India1902-115r. ultramarine and deep lilac, unmounted mint example from the upper-right corner of the sheet; fine. S.G. 143, £300Subject to 5% tax on Hammer Price in addition to 20% VAT on Buyer's Premium.

Estimate  
£200 to £250

**Lot 3290**



(x) India1902-1110r. green and carmine, upper-right corner mint example; some gum disturbance otherwise fine. S.G. 144, £400Subject to 5% tax on Hammer Price in addition to 20% VAT on Buyer's Premium.

Estimate  
£200 to £250



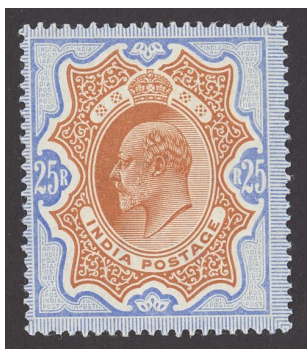
**Lot 3291**



(x) India1902-1115r. blue and olive-brown, corner marginal example from the lower right of the sheet, unmounted mint. S.G. 145, £450Subject to 5% tax on Hammer Price in addition to 20% VAT on Buyer's Premium.

Estimate  
£250 to £300

**Lot 3292**



(x) India1902-1125r. brownish orange and blue, large part original gum; fine and fresh, scarce. S.G. 147, £3,000Subject to 5% tax on Hammer Price in addition to 20% VAT on Buyer's Premium.

Estimate  
£1,500 to £2,000

**Lot 3293**



(x) India1902-1125r. brownish orange and blue, a scarce postally used example with slightly faint c.d.s., fine. S.G. 147, £1,800Subject to 5% tax on Hammer Price in addition to 20% VAT on Buyer's Premium.

Estimate  
£1,000 to £1,500

**Lot 3294**



(x) IndiaA group of covers (18) various frankings and destinations including within India and to France, Germany, USA etc., postal stationery envelopes, O.H.M.S. envelopes, etc. a useful and interesting lotSubject to 5% tax on Hammer Price in addition to 20% VAT on Buyer's Premium.

Estimate  
£200 to £250

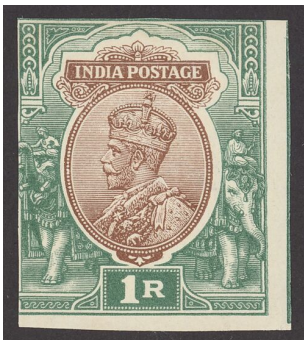
### Lot 3295



(x) India 1911-43 collection of mint blocks of four including 1911-23 with values to 12a. and with blocks in various shades, 1926-33 group of blocks with values to 12a. (no 2a. bright purple or 3a. blue), 1929 Air set of six, 1931 Inauguration set to 1r., 1932-36 set to 6a., 1940-43 set to 14a.; fine and fresh mint. S.G. cat value £1,300+ Subject to 5% tax on Hammer Price in addition to 20% VAT on Buyer's Premium.

Estimate  
£400 to £500

### Lot 3296



(x) India 1911-23 1r. brown and green, imperforate plate proof on gummed watermarked paper, large margins at foot and right, cut close and into frameline at top and left Subject to 5% tax on Hammer Price in addition to 20% VAT on Buyer's Premium.

Estimate  
£250 to £300

### Lot 3297



(x) India 1911-23 1r., 2r. (2, one in a peculiar shade, possibly a colour changeling), 5r. and 10r.; the 1r., 2r. and 10r. marginal examples, some minor faults but generally fine. S.G. 186-189 group, £400 Subject to 5% tax on Hammer Price in addition to 20% VAT on Buyer's Premium.

Estimate  
£250 to £300

### Lot 3298



(x) India 1911-23 1r. brown and green blocks of four (2, one with interpanneau margins) and 1r. orange-brown and deep turquoise-green block of four from the lower right corner of the sheet; large part original gum, fine. S.G. 186, 186a Subject to 5% tax on Hammer Price in addition to 20% VAT on Buyer's Premium.

Estimate  
£250 to £300

**Lot 3299**



(x) India 1911-23 5r. ultramarine and violet, a block of four, large part original gum. S.G. 188, £380+Subject to 5% tax on Hammer Price in addition to 20% VAT on Buyer's Premium.

Estimate  
£200 to £250

**Lot 3300**



(x) India 1911-23 10r. green and scarlet, a block of four from the lower left corner of the sheet, large part original gum. S.G. 189, £720+Subject to 5% tax on Hammer Price in addition to 20% VAT on Buyer's Premium.

Estimate  
£500 to £600

**Lot 3301**



(x) India 1921 9p. on 1a. block of four with interpanneau margin at foot, the lower horizontal pair both showing error 'pies pies', lightly mounted mint. S.G. 192, 192b, £260+Subject to 5% tax on Hammer Price in addition to 20% VAT on Buyer's Premium.

Estimate  
£150 to £200



**Lot 3302**

(x) India 1926-36 mint assembly of blocks of four and larger (37) including values to 5r., some blocks with watermark inverted etc. generally fine mint. S.G. cat. value in excess of £3,300 (for mint singles) Subject to 5% tax on Hammer Price in addition to 20% VAT on Buyer's Premium.

Estimate  
£800 to £1,000

**Lot 3303**

(x) India 1926-33 1r. chocolate and green and 2r. carmine and orange, both in interpanneau blocks of four with sheet margin on one side; large part original gum, fine. S.G. 214, 215 Subject to 5% tax on Hammer Price in addition to 20% VAT on Buyer's Premium.

Estimate  
£150 to £200

**Lot 3304**

(x) India 1926-33 1r. chocolate and green, block of four from the upper right corner of the sheet with vignette noticeably misplaced to lower right, unmounted mint, hinged and very slightly stained in the margin; fine and scarce. S.G. 214 var. Subject to 5% tax on Hammer Price in addition to 20% VAT on Buyer's Premium.

Estimate  
£600 to £800

**Lot 3305**

(x) India 1926-33 15r. blue and olive, two blocks of four, one with watermark upright and the other with watermark inverted; very lightly mounted on the upper stamps only. S.G. 218, 218w, £592+ Subject to 5% tax on Hammer Price in addition to 20% VAT on Buyer's Premium.

Estimate  
£350 to £400

**Lot 3306**

(x) India 1926-33 15r. blue and olive, block of eight all showing watermark inverted, original slightly disturbed gum. S.G. 218w, £384+ Subject to 5% tax on Hammer Price in addition to 20% VAT on Buyer's Premium.

Estimate  
£150 to £200



**Lot 3307**



(x) India 1926-33 25r. orange and blue, marginal example from the right of the sheet with interpanneau margin at top; unmounted mint. S.G. 219, £325 Subject to 5% tax on Hammer Price in addition to 20% VAT on Buyer's Premium.

Estimate  
£200 to £250

**Lot 3308**



(x) India 1926-33 25r. orange and blue, lightly mounted mint, small gum inclusion not affecting the appearance. S.G. 219, £325 Subject to 5% tax on Hammer Price in addition to 20% VAT on Buyer's Premium.

Estimate  
£150 to £200

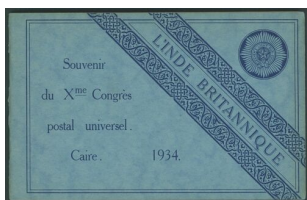
**Lot 3309**



(x) India 1926-33 25r. orange and blue, lightly mounted mint. S.G. 219, £325 Subject to 5% tax on Hammer Price in addition to 20% VAT on Buyer's Premium.

Estimate  
£180 to £200

**Lot 3310**



(x) India 1934 'L'Inde Britannique' Cairo U.P.U. Souvenir booklet containing 1926-33 set of eighteen to 25r. and 1929 Air set of six, all mounted on presentation pages; fine and fresh colours. S.G. 201-225, £705 Subject to 5% tax on Hammer Price in addition to 20% VAT on Buyer's Premium.

Estimate  
£300 to £400

### Lot 3311



(x) India 1929 Air 8a. purple, variety missing tree-top, very lightly mounted mint. S.G. 224a, £375 Subject to 5% tax on Hammer Price in addition to 20% VAT on Buyer's Premium.

Estimate  
£150 to £200

### Lot 3312



(x) India 1929 Air 8a. purple, variety reversed serif, fine used. S.G. 224b, £475 Subject to 5% tax on Hammer Price in addition to 20% VAT on Buyer's Premium.

Estimate  
£200 to £250

### Lot 3313



(x) India 1937-40 set of eighteen to 25r., each in an unmounted mint block of four; fine and fresh multiples. S.G. 247-264, £2,400+ Subject to 5% tax on Hammer Price in addition to 20% VAT on Buyer's Premium.

Estimate  
£1,500 to £2,000

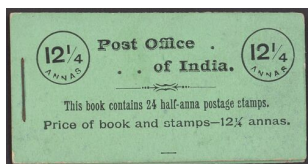
### Lot 3314



(x) India 1937-40 15r. brown and green from the left of the sheet with interpanneau margin at foot and 25r. slate-violet and purple, the former unmounted mint, the latter lightly mounted. S.G. 263-264, £480 Subject to 5% tax on Hammer Price in addition to 20% VAT on Buyer's Premium.

Estimate  
£220 to £260

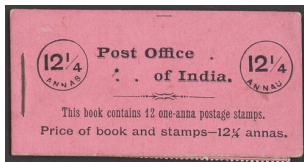
### Lot 3315



(x) India Booklets 1904 12 1/4 a. black on green, one pane of six missing, some creasing and peripheral faults; fine and fresh cover, scarce thus. S.G. SB1, £2,000 (for complete) Subject to 5% tax on Hammer Price in addition to 20% VAT on Buyer's Premium.

Estimate  
£600 to £800

### Lot 3316



(x) IndiaBooklets1904 12 $\frac{1}{4}$ a. black on pink, complete with both panes intact, one with some perf. separation; some tone spots and creasing in places, nevertheless rare. S.G. SB2, £2,000Subject to 5% tax on Hammer Price in addition to 20% VAT on Buyer's Premium.

Estimate  
£800 to £1,000

---

### Lot 3317

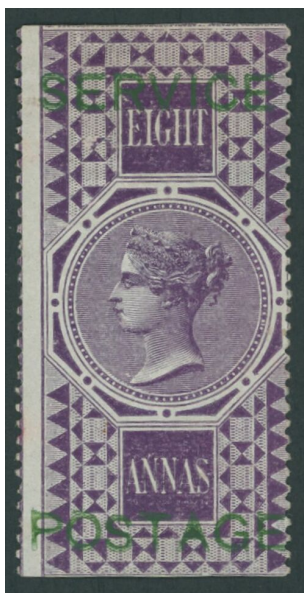


(x) IndiaBooklets1922 1r. black on brown (incomplete with one complete pane of four and part panes of one and two) and 1r. black on green and pink (incomplete with two complete  $\frac{1}{2}$ a. panes and a part pane of three of the 1a.); scarce even though incomplete. S.G. SB14, SB15, £1,775 (for complete)Subject to 5% tax on Hammer Price in addition to 20% VAT on Buyer's Premium.

Estimate  
£350 to £400

---

### Lot 3318



(x) IndiaOfficial Stamps1866 8a. purple overprinted 'service/postage' in green, part original gum, fine and rare; signed A.D(iena) and with Brandon Certificate (1986). S.G. O18, £10,000Subject to 5% tax on Hammer Price in addition to 20% VAT on Buyer's Premium.

Estimate  
£4,000 to £6,000

---

### Lot 3319



(x) India1909 Official 15r. blue and olive-brown, mint with interpanneau margin at foot and 25r. brownish-orange and blue, used with Telegraph cancellation. S.G. O71 and O72, £220Subject to 5% tax on Hammer Price in addition to 20% VAT on Buyer's Premium.

Estimate  
£80 to £100

---

Lot 3320



(x) India 1866 Fiscal 2a. purple, imperf x 14, a horizontal strip of ten from the left of the sheet with sheet margin, large part original gum; a rare multiple. S.G. O15, £8,000 Subject to 5% tax on Hammer Price in addition to 20% VAT on Buyer's Premium.

Estimate  
£4,000 to £5,000



**Lot 3321**



(x) India Feudatory States Duttia 1897-1906 group including 1897-98 2a. black on yellow, 4a. black on rose (2) etc. and 1899 blocks of four; with handstamps, generally fine Subject to 5% tax on Hammer Price in addition to 20% VAT on Buyer's Premium.

Estimate  
£100 to £150

**Lot 3322**



(x) India Feudatory States Orcha 1939-42 10r. turquoise-green, large part original gum; fine. S.G. 45, £1,500 Subject to 5% tax on Hammer Price in addition to 20% VAT on Buyer's Premium.

Estimate  
£600 to £800

**Lot 3323**



(x) Jamaica 1905-11 3d. purple on yellow, 4d. black on yellow, 4d. red on yellow, 6d. lilac, 1/- black on green and 2/- purple on blue; each overprinted "specimen", large part original gum. S.G. 47s-56s, £325 Subject to 5% tax on Hammer Price in addition to 20% VAT on Buyer's Premium.

Estimate  
£100 to £150

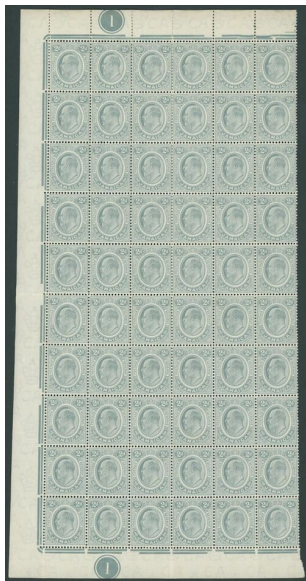
**Lot 3324**



(x) Jamaica 1905-11 3d. purple on yellow, 4d. black on yellow, 4d. red on yellow, 6d. lilac (2) 1/- black on green and 2/- purple on blue; each overprinted "specimen", large part original gum. S.G. 47s-56s, £325 Subject to 5% tax on Hammer Price in addition to 20% VAT on Buyer's Premium.

Estimate  
£100 to £150

### Lot 3325



(x) Jamaica 1911 MCA 2d. grey, a block of sixty from the left of the sheet with margins on three sides and plate number '1' at top and foot; full original gum. S.G. 57, £720+Subject to 5% tax on Hammer Price in addition to 20% VAT on Buyer's Premium.

Estimate  
£250 to £300

### Lot 3326



(x) Kenya, Uganda and Tanganyika 1903-04 1903 2r. die proof in black on white glazed card (90 x 60mm.) endorsed 'before/hardening' and dated '9 may 03'; fine Subject to 5% tax on Hammer Price in addition to 20% VAT on Buyer's Premium.

Estimate  
£350 to £400

### Lot 3327



(x) Kenya, Uganda and Tanganyika 1903-04 20r. grey and stone and 50r. grey and red-brown, overprinted "specimen", large part original gum; some ink offset and hinge remainder on reverse of the 50r.. S.G. 15s and 16s, £650 Subject to 5% tax on Hammer Price in addition to 20% VAT on Buyer's Premium.

Estimate  
£250 to £300

### Lot 3328



(x) Kenya, Uganda and Tanganyika 1903 CA 1/2d. to 10r., set of fourteen, generally good to fine mint; fresh appearance. S.G. 1-14, £1,150 Subject to 5% tax on Hammer Price in addition to 20% VAT on Buyer's Premium.

Estimate  
£400 to £600

**Lot 3329**



(x) Kenya, Uganda and Tanganyika 1903-04 1½a. to 5r. set of thirteen, large part original gum. S.G. 1-13, £700 Subject to 5% tax on Hammer Price in addition to 20% VAT on Buyer's Premium.

Estimate  
£250 to £300

---

**Lot 3330**



(x) Kenya, Uganda and Tanganyika 1903-04 2a. dull and bright purple, watermark inverted, large part original gum. S.G. 3w, £250 Subject to 5% tax on Hammer Price in addition to 20% VAT on Buyer's Premium.

Estimate  
£100 to £150

---

**Lot 3331**



(x) Kenya, Uganda and Tanganyika 1903-04 20r. grey and stone, lightly mounted mint. S.G. 15, £1,000 Subject to 5% tax on Hammer Price in addition to 20% VAT on Buyer's Premium.

Estimate  
£300 to £400

---

**Lot 3332**

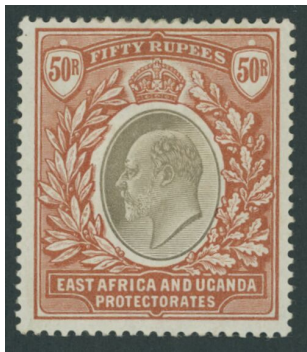


(x) Kenya, Uganda and Tanganyika 1903-04 20r. grey and stone, large part disturbed gum. S.G. 15, £1,000 Subject to 5% tax on Hammer Price in addition to 20% VAT on Buyer's Premium.

Estimate  
£350 to £400

---

### Lot 3333



(x) Kenya, Uganda and Tanganyika 1903-04 50r. grey and red-brown, large part original slightly toned gum; light diagonal bend otherwise fine. S.G. 16, £2,750 Subject to 5% tax on Hammer Price in addition to 20% VAT on Buyer's Premium.

Estimate  
£400 to £600

### Lot 3334



(x) Kenya, Uganda and Tanganyika 1904-08 mint collection on album pages comprising 1904-07 MCA set to 10r., 1907-08 new currency set to 75c., 1910 6c. red (single and a booklet pane of six), also some multiples including 1903 CA 1a. block of sixteen from the foot of the sheet with plate number '1', 1904-07 MCA 1/2a. block of twelve from the foot of the sheet with plate number '1', also MCA blocks of four of the 1/2a., 2a., 3a. and 4a.; generally fine mint. S.G. cat value £1,400+ Subject to 5% tax on Hammer Price in addition to 20% VAT on Buyer's Premium.

Estimate  
£400 to £500

### Lot 3335



(x) Kenya, Uganda and Tanganyika 1904-07 1/2a. to 5r. part set of twelve (no 3a.), large part original gum; generally fine. S.G. 17-21, 23-30 Subject to 5% tax on Hammer Price in addition to 20% VAT on Buyer's Premium.

Estimate  
£200 to £250

### Lot 3336



(x) Kenya, Uganda and Tanganyika 1904-07 3r. grey-green and black, a block of four from the upper right corner of the sheet with sheet number '112' and plate number 1; lightly mounted mint. S.G. 28, £480+ Subject to 5% tax on Hammer Price in addition to 20% VAT on Buyer's Premium.

Estimate  
£250 to £350

### Lot 3337



(x) Kenya, Uganda and Tanganyika 1904-07 4r. grey and emerald-green, 5r. grey and red and 10r. grey and ultramarine, the 5r. and 10r. both corner marginal examples with plate number '1', the 4r. with part sheet margin but a couple of minor tone spots on the reverse; large part original gum. S.G. 29-31, £750+ Subject to 5% tax on Hammer Price in addition to 20% VAT on Buyer's Premium.

Estimate  
£350 to £400



**Lot 3338**

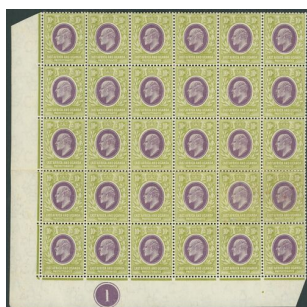
(x) Kenya, Uganda and Tanganyika 1904-074r. grey and emerald-green, a block of four from the upper right corner of the sheet with sheet number '126' and plate number '1', lightly mounted mint. S.G. 29, £600+Subject to 5% tax on Hammer Price in addition to 20% VAT on Buyer's Premium.

Estimate  
£400 to £500

**Lot 3339**

(x) Kenya, Uganda and Tanganyika 1904-0750r. grey and red-brown, large part original gum; fine. S.G. 33, £3,000Subject to 5% tax on Hammer Price in addition to 20% VAT on Buyer's Premium.

Estimate  
£800 to £1,200

**Lot 3340**

(x) Kenya, Uganda and Tanganyika 1907-08 MCA 10c. lilac and pale olive, a block of thirty from the lower left corner of the sheet with plate number '1', full original gum, a couple of very light tone spots on the reverse. S.G. 37, £390+Subject to 5% tax on Hammer Price in addition to 20% VAT on Buyer's Premium.

Estimate  
£200 to £250

**Lot 3341**

(x) Kenya, Uganda and Tanganyika 1912-21 MCA 10r. red and green on green, a block of four from the upper right corner of the sheet with print number '0372' and plate number '1', mounted in the margin only; fine and fresh, a rare multiple. S.G. 58Subject to 5% tax on Hammer Price in addition to 20% VAT on Buyer's Premium.

Estimate  
£600 to £800

**Lot 3342**



(x) Kenya, Uganda and Tanganyika 1912-21 MCA 10r. red and green on green, lightly mounted mint. S.G. 58, £250 Subject to 5% tax on Hammer Price in addition to 20% VAT on Buyer's Premium.

Estimate  
£100 to £150

**Lot 3343**



(x) Kenya, Uganda and Tanganyika 1921 Script 50r. carmine and green, overprinted "specimen", lightly mounted mint; fine. S.G. 75s, £500 Subject to 5% tax on Hammer Price in addition to 20% VAT on Buyer's Premium.

Estimate  
£250 to £300

**Lot 3344**



(x) Kenya, Uganda and Tanganyika 1921 Script 5r. blue and dull purple, from the left of the sheet with plate number '1'; very lightly mounted mint. S.G. 74, £225 Subject to 5% tax on Hammer Price in addition to 20% VAT on Buyer's Premium.

Estimate  
£100 to £150

**Lot 3345**



(x) Kenya, Uganda and Tanganyika 1922-27 Script £4 black and magenta, overprinted "specimen", large part original gum. S.G. 98s, £700 Subject to 5% tax on Hammer Price in addition to 20% VAT on Buyer's Premium.

Estimate  
£250 to £300

**Lot 3346**



(x) Kenya, Uganda and Tanganyika 1922-27 Script £10 black and green, overprinted "specimen", without gum. S.G. 100s, £1,200 Subject to 5% tax on Hammer Price in addition to 20% VAT on Buyer's Premium.

Estimate  
£400 to £500

**Lot 3347**

(x) Kenya, Uganda and Tanganyika 1922-27 Script 1/- green, 2/- dull purple and 10/- bright blue; each in an upper right corner block of four with plate number '1' and current number at upper right; large part original gum, the 10/- unmounted mint, fine. S.G. 87, 88, 94, £400+Subject to 5% tax on Hammer Price in addition to 20% VAT on Buyer's Premium.

Estimate  
£250 to £300

**Lot 3348**

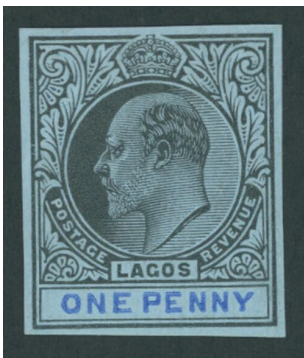
(x) Kenya, Uganda and Tanganyika 1922-27 Script 4/- grey and 10/- bright blue, both variety watermark Crown to right of CA, large part original gum. S.G. 91w, 94w, £630Subject to 5% tax on Hammer Price in addition to 20% VAT on Buyer's Premium.

Estimate  
£250 to £300

**Lot 3349**

(x) Labuan 1902-03 1c. to \$1 set of twelve, each in a block of four; unmounted mint; a few very minor tone spots in the margin of the 12c., fine. S.G. 117-128, £360+Subject to 5% tax on Hammer Price in addition to 20% VAT on Buyer's Premium.

Estimate  
£200 to £250

**Lot 3350**

(x) Lagos 1904 CA 1d. imperforate colour trial in dull purple and blue on blue, on gummed watermarked paper; large part original gum, fineSubject to 5% tax on Hammer Price in addition to 20% VAT on Buyer's Premium.

Estimate  
£250 to £300

**Lot 3351**

(x) Leeward Islands 1902 CA set of nine to 5/-, each overprinted "specimen", large part original gum. S.G. 20s-28s, £200Subject to 5% tax on Hammer Price in addition to 20% VAT on Buyer's Premium.

Estimate  
£100 to £150



Lot 3352



(x) Leeward Islands 1902 CA 2½d. dull purple and ultramarine, variety wide 'a' in 'leeward', very lightly mounted mint. S.G. 23a, £275 Subject to 5% tax on Hammer Price in addition to 20% VAT on Buyer's Premium.

Estimate  
£100 to £150

Lot 3353



(x) Leeward Islands 1902 CA 1/- green and carmine, variety dropped 'r' in 'leeward', large part original gum. S.G. 26a, £550 Subject to 5% tax on Hammer Price in addition to 20% VAT on Buyer's Premium.

Estimate  
£250 to £300

Lot 3354



(x) Leeward Islands 1907-11 MCA ¼d. to 5/- set of ten, each overprinted "specimen", large part original gum. S.G. 36s-45s, £300 Subject to 5% tax on Hammer Price in addition to 20% VAT on Buyer's Premium.

Estimate  
£150 to £200

Lot 3355



(x) Leeward Islands 1907-11 5/- green and red on yellow, a block of four, lightly mounted on the lower pair only; fine. S.G. 45, £200+ Subject to 5% tax on Hammer Price in addition to 20% VAT on Buyer's Premium.

Estimate  
£100 to £150

Lot 3356

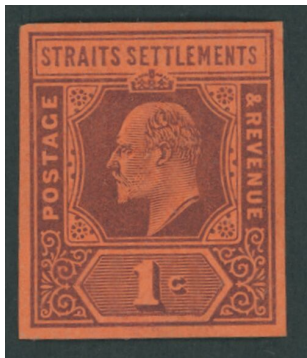


(x) Leeward Islands 1912-22 MCA 5/- green and red on orange buff, a block of twelve from the lower right corner of the sheet with plate number '8', large part original streaky gum with diagonal lines, mounted on a few stamps only; a scarce and attractive large multiple. S.G. 57c, £1,440+ Subject to 5% tax on Hammer Price in addition to 20% VAT on Buyer's Premium.

Estimate  
£600 to £800



### Lot 3357



(x) MalayaStraits Settlements1902-031c. imperforate colour trial in purple on red, the colour of the issued 4c value, on gummed watermarked paper; fineSubject to 5% tax on Hammer Price in addition to 20% VAT on Buyer's Premium.

Estimate  
£350 to £400

### Lot 3358



(x) MalayaStraits Settlements1902-03\$5 imperforate colour trial in dull green and violet, affixed to small piece; fineSubject to 5% tax on Hammer Price in addition to 20% VAT on Buyer's Premium.

Estimate  
£350 to £400

### Lot 3359



(x) MalayaStraits Settlements1902-12 mainly mint collection on album pages including 1902-03 CA to \$5, 1903-04 CA to 8c., 1904-10 MCA to \$5 mint a and 1906-12 MCA part set of thirteen to \$5 (no 4c. dull purple or 4c. claret); generally fine and fresh. S.G. cat value £1,300+Subject to 5% tax on Hammer Price in addition to 20% VAT on Buyer's Premium.

Estimate  
£300 to £400

### Lot 3360



(x) MalayaStraits Settlements1902-03\$100 purple and green on yellow, overprinted "specimen", large part original gum. S.G. 122s, £800Subject to 5% tax on Hammer Price in addition to 20% VAT on Buyer's Premium.

Estimate  
£300 to £400

**Lot 3361**



(x) MalayaStraits Settlements1902-03\$100 purple and green on yellow, well-centred and with fresh appearance, a superb example of this rare high value, signed Friedl on the reverse in pencil and with his Certificate (1975). S.G. 122, £22,000provenance:"Doyen", Spink, October 2020Subject to 5% tax on Hammer Price in addition to 20% VAT on Buyer's Premium.

Estimate  
£8,000 to £10,000

**Lot 3362**



(x) MalayaStraits Settlements1903-04 1c., 3c., 4c. and 8c., each overprinted "specimen", large part original gum; fine. S.G. 123s-126s, £250Subject to 5% tax on Hammer Price in addition to 20% VAT on Buyer's Premium.

Estimate  
£100 to £150

**Lot 3363**



(x) MalayaStraits Settlements1904-10\$25 grey-green and black, well-centred and good colours; part original gum, fine. S.G. 139, £3,500Subject to 5% tax on Hammer Price in addition to 20% VAT on Buyer's Premium.

Estimate  
£1,000 to £1,500

**Lot 3364**



(x) MalayaStraits Settlements1904-10\$100 purple and green on yellow, an upper-right corner marginal example with trimmed margins, lightly mounted mint, a superb example of this world rarity; signed A.Diena, E. Diena and Peter Holcombe and accompanied by a Certificate from each (1974, 1988 and 1989) respectively. S.G. 140, £22,000provenance: "Doyen", Spink, October 2020Subject to 5% tax on Hammer Price in addition to 20% VAT on Buyer's Premium.

Estimate  
£8,000 to £10,000

Lot 3364A

**IMAGE  
PENDING**

**SPINK**  
WHERE HISTORY IS VALUED

(x) MalayaStraits Settlements1904-10 MCA \$100 purple and green on yellow, fiscally used and tied to piece by Penang embossed Revenue cancellation; fine. S.G. 140, £450Subject to 5% tax on Hammer Price in addition to 20% VAT on Buyer's Premium.

Estimate  
£150 to £200

Lot 3365



(x) MalayaStraits Settlements1906-07 Labuan overprint set of eleven to \$1, part to large part original gum; the 4c. on 10c. with toned perf. at foot otherwise fine. S.G. 141-151, £425Subject to 5% tax on Hammer Price in addition to 20% VAT on Buyer's Premium.

Estimate  
£150 to £200

Lot 3366



(x) MalayaStraits Settlements1906-12 \$25 purple and blue on blue, well-centred and with large part original gum, a few minor tone spots on the reverse not affecting the appearance. S.G. 168, £3,750Subject to 5% tax on Hammer Price in addition to 20% VAT on Buyer's Premium.

Estimate  
£700 to £900

Lot 3367



(x) MalayaStraits Settlements1906-12 \$500 purple and orange, overprinted "specimen", small part original gum. S.G. 169s, £5,000Subject to 5% tax on Hammer Price in addition to 20% VAT on Buyer's Premium.

Estimate  
£1,200 to £1,500

### Lot 3368



(x) Malaya Federated Malay States 1c. imperforate colour trial in green and purple, on gummed watermarked paper; large part original gum, fine Subject to 5% tax on Hammer Price in addition to 20% VAT on Buyer's Premium.

Estimate  
£300 to £400

---

### Lot 3369



(x) Malaya Federated Malay States 1c. imperforate colour trial in green and purple, on gummed watermarked paper; large part original gum, fine Subject to 5% tax on Hammer Price in addition to 20% VAT on Buyer's Premium.

Estimate  
£300 to £400

---

### Lot 3370



(x) Malaya Federated Malay States 1c. imperforate colour trial in dull green and green, on gummed watermarked paper; large part original gum, fine Subject to 5% tax on Hammer Price in addition to 20% VAT on Buyer's Premium.

Estimate  
£300 to £400

---

### Lot 3371



(x) Malaya Federated Malay States 1c. imperforate colour trial in green and black on gummed watermarked paper, affixed to small piece; fine Subject to 5% tax on Hammer Price in addition to 20% VAT on Buyer's Premium.

Estimate  
£300 to £400

---

### Lot 3372



(x) Malaya Federated Malay States 1900-34 mainly mint collection on album pages and a Hagner sheet with 1900 overprint set to 50c., Perak overprint set to \$5 and additionally with \$5 and \$25 overprinted "specimen", 1900-01 CA to 50c. (with shades) 1900 CC \$1 to \$5 values and with \$1 and £5 overprinted "specimen", 1904-22 with values to \$5 including shades and a few high values used, 1922-34 with values to \$5 including shades, 1924-26 Postage Dues etc., condition mixed with toning and other small faults. S.G. cat. value £6,500+ Subject to 5% tax on Hammer Price in addition to 20% VAT on Buyer's Premium.

Estimate  
£1,000 to £1,500

---



**Lot 3373**

(x) Malaya Federated Malay States 1922-34 Script \$25 green and orange, overprinted "specimen", toned perf at top, large part original gum. S.G. 82s, £600 Subject to 5% tax on Hammer Price in addition to 20% VAT on Buyer's Premium.

Estimate  
£200 to £250

**Lot 3374**

(x) Malaya Johore 1904-10 \$1, \$2, \$3, \$4, \$5 and \$10 each in a block of four, unmounted mint. S.G. 70-75, £1,544 Subject to 5% tax on Hammer Price in addition to 20% VAT on Buyer's Premium.

Estimate  
£550 to £700

**Lot 3375**

(x) Malta 1902 master die proof with uncleared value tablet and surround in black on white glazed card (90 x 60mm.), endorsed 'after/ hardening', dated '30 oct. 02' and signed 'G.C.G.' in manuscript; fine Subject to 5% tax on Hammer Price in addition to 20% VAT on Buyer's Premium.

Estimate  
£400 to £500

**Lot 3376**

(x) Malta 1902 4d. frame only die proof in black on white glazed card (90 x 60mm.), endorsed 'before/ hardening' and dated '22 nov. 02', fine Subject to 5% tax on Hammer Price in addition to 20% VAT on Buyer's Premium.

Estimate  
£300 to £400

**Lot 3377**

(x) Malta 1903-14 mint group comprising 1903-04 CA set to 1/-, 1904-14 MCA set of seventeen to 5/- and additional 1903-04 CA 1/2d. block of thirty and 1904-14 MCA 1/4a. block of forty-eight; generally fine mint. S.G. 38-63 group, £1,100+ Subject to 5% tax on Hammer Price in addition to 20% VAT on Buyer's Premium.

Estimate  
£200 to £250

**Lot 3378**

(x) Malta 1904-14 MCA set of seventeen, each in a corner block of four with plate number '1' or '2' where printed with plate numbers (not present on the 4½d. or 5d. values); some slight imperfections but generally fresh and fine. S.G. 45-63 Subject to 5% tax on Hammer Price in addition to 20% VAT on Buyer's Premium.

Estimate  
£800 to £1,200

**Lot 3379**

(x) Malta 1938-43 2/6d black and scarlet, variety damaged value tablet, very lightly mounted mint. S.G. 229a, £400 Subject to 5% tax on Hammer Price in addition to 20% VAT on Buyer's Premium.

Estimate  
£150 to £200

**Lot 3380**

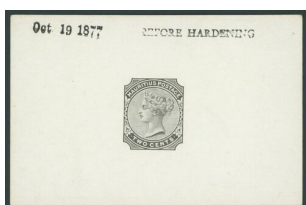
(x) Mauritius 1863-72 10d. master die proof in black on white glazed card (90 x 60mm.), endorsed 'after hardening' and dated 'July 18, 1872'; fine Subject to 5% tax on Hammer Price in addition to 20% VAT on Buyer's Premium.

Estimate  
£300 to £400

**Lot 3381**

(x) Mauritius 1879-802c. master die proof in black on white glazed card (90 x 60mm.), dated 'Oct. 16 1877', fine Subject to 5% tax on Hammer Price in addition to 20% VAT on Buyer's Premium.

Estimate  
£300 to £400

**Lot 3382**

(x) Mauritius 1879-802c. master die proof in black on white glazed card (90 x 60mm.), endorsed 'before hardening' and dated 'Oct. 19 1877', fine Subject to 5% tax on Hammer Price in addition to 20% VAT on Buyer's Premium.

Estimate  
£300 to £400

**Lot 3383**

(x) Mauritius1879-8013c. master die proof in black on white glazed card (90 x 60mm.), dated 'Nov. 17 1877', fineSubject to 5% tax on Hammer Price in addition to 20% VAT on Buyer's Premium.

Estimate  
£300 to £400

**Lot 3384**

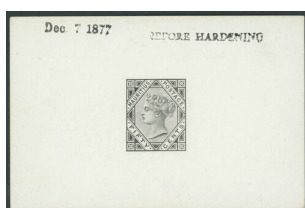
(x) Mauritius1879-8018c. master die proof in black on white glazed card (90 x 60mm.), dated 'Nov. 8 1877', fineSubject to 5% tax on Hammer Price in addition to 20% VAT on Buyer's Premium.

Estimate  
£300 to £400

**Lot 3385**

(x) Mauritius1879-8025c. master die proof in black on white glazed card (90 x 60mm.) endorsed 'before hardening' and dated Nov. 2 1877'; fineSubject to 5% tax on Hammer Price in addition to 20% VAT on Buyer's Premium.

Estimate  
£300 to £400

**Lot 3386**

(x) Mauritius1879-8050c. master die proof in black on white glazed card (90 x 60mm.), endorsed 'before hardening' and dated 'Dec. 7. 1877', fineSubject to 5% tax on Hammer Price in addition to 20% VAT on Buyer's Premium.

Estimate  
£300 to £400

**Lot 3387**

(x) Mauritius1883-94 1c. master die proof in black on white glazed card, endorsed 'before/ hardening' and dated '21 mar. 93'; fineSubject to 5% tax on Hammer Price in addition to 20% VAT on Buyer's Premium.

Estimate  
£300 to £400

**Lot 3388**

(x) Mauritius1900-05 1r. grey-black and carmine, variety watermark inverted, large part original gum. S.G. 153w, £140Subject to 5% tax on Hammer Price in addition to 20% VAT on Buyer's Premium.

Estimate  
£70 to £100

**Lot 3389**



(x) Mauritius 1910 MCA 2r.50c. corner block of four with plate number '1' and 10r. single mint example; lightly mounted mint. S.G. 193, 195, £318+ Subject to 5% tax on Hammer Price in addition to 20% VAT on Buyer's Premium.

Estimate  
£100 to £150

**Lot 3390**



(x) Mauritius 1938-49 25c. brown-purple, a block of six from the upper right corner of the sheet, showing variety 'ij' flaw, and with print number '0369' at top; slightly toned gum. S.G. 259ba, £300+ Subject to 5% tax on Hammer Price in addition to 20% VAT on Buyer's Premium.

Estimate  
£100 to £150

**Lot 3391**



(x) Montserrat 1903 (Aug.) 1/2d. frame only die proof in black on white glazed card (90 x 60mm.) endrosed 'before/ hardening' and dated '9 mar. 03'; fine provenance: C. Barwick, Harmer's, London, December 1997 Subject to 5% tax on Hammer Price in addition to 20% VAT on Buyer's Premium.

Estimate  
£300 to £400

**Lot 3392**



(x) Montserrat 1903 (Aug.) 1d. frame only die proof in black on white glazed card (90 x 60mm.) endrosed 'after/ hardening' and dated '2 apr. 03'; fine provenance: C. Barwick, Harmer's, London, December 1997 Subject to 5% tax on Hammer Price in addition to 20% VAT on Buyer's Premium.

Estimate  
£300 to £400

**Lot 3393**



(x) Montserrat 1903 (Aug.) 2 1/2d. frame only die proof in black on white glazed card (90 x 60mm.) endrosed 'after/ hardening' and dated '2 apr. 03'; fine provenance: C. Barwick, Harmer's, London, December 1997 Subject to 5% tax on Hammer Price in addition to 20% VAT on Buyer's Premium.

Estimate  
£300 to £400



### Lot 3394



(x) Montserrat1903 (Aug.)3d. frame only die proof in black on white glazed card (90 x 60mm.) endrosed 'after/ hardening' and dated '2 apr. 03'; fineprovenance:C. Barwick, Harmer's, London, December 1997Subject to 5% tax on Hammer Price in addition to 20% VAT on Buyer's Premium.

Estimate  
£300 to £400

### Lot 3395



(x) Montserrat1903 (Aug.)2/6d. frame only die proof in black on white glazed card (90 x 60mm.) endrosed 'before/ hardening' and dated '9 apr. 03'; fineprovenance:C. Barwick, Harmer's, London, December 1997Subject to 5% tax on Hammer Price in addition to 20% VAT on Buyer's Premium.

Estimate  
£300 to £400

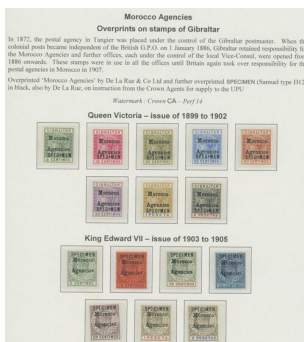
### Lot 3396



(x) Montserrat1908-14 MCA set of ten to 5/- (three of each value) overprinted "specimen" and handstamped 'postes et telegraphes/ madagascar' in pink, affixed to archival pages from the Madagascar Postal Archives. S.G. 35s-47s, £825 (for standard specimen sets)Subject to 5% tax on Hammer Price in addition to 20% VAT on Buyer's Premium.

Estimate  
£400 to £500

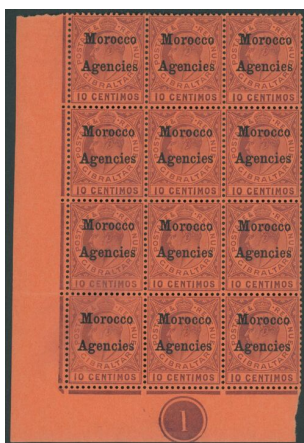
### Lot 3397



(x) Morocco Agencies1899 set of eight to 2p. and 1903-05 set of seven to 2p., each overprinted "specimen", large part original gum. S.G. 9s-23s, £450Subject to 5% tax on Hammer Price in addition to 20% VAT on Buyer's Premium.

Estimate  
£200 to £250

### Lot 3398



(x) Morocco Agencies1905-06 MCA 10c. dull purple on red, a block of twelve from the lower left of the sheet with plate number '1', also showing variety broad top to 'm' [7/3]; mounted on one stamp only, fine. S.G. 25 25b, £364+Subject to 5% tax on Hammer Price in addition to 20% VAT on Buyer's Premium.

Estimate  
£150 to £200

### Lot 3399



(x) Natal1902-03 1½d. master die proof in black on white glazed card (90 x 60mm.), endorsed 'before/ hardening' and dated '11 jan. 02'; fineSubject to 5% tax on Hammer Price in addition to 20% VAT on Buyer's Premium.

Estimate  
£300 to £400

### Lot 3400



(x) Natal1902-03 3d. master die proof in black on white glazed card (90 x 60mm.), endorsed 'after/ hardening' and dated '7 jan. 02', fineSubject to 5% tax on Hammer Price in addition to 20% VAT on Buyer's Premium.

Estimate  
£300 to £400

### Lot 3401



(x) Natal1902-03 CA set of thirteen to 4/- and 1902 CC set of five to £5, all overprinted "specimen", generally fine mint. S.G. 127s-144s, £895Subject to 5% tax on Hammer Price in addition to 20% VAT on Buyer's Premium.

Estimate  
£300 to £400

### Lot 3402



(x) Natal1902-03 5/- to £1.10/- group of four all overprinted "specimen", the 10/- with diagonal gum bend; large part original gum. S.G. 140s-143s, £320Subject to 5% tax on Hammer Price in addition to 20% VAT on Buyer's Premium.

Estimate  
£100 to £150

### Lot 3403



(x) Natal1902-03CC £5 mauve and black and £10 green and orange, both overprinted "specimen", large part original gum. S.G. 144s, 145s, £750Subject to 5% tax on Hammer Price in addition to 20% VAT on Buyer's Premium.

Estimate  
£250 to £300

### Lot 3404



(x) Natal1902-03CC £10 green and orange and £20 red and green, both overprinted "specimen", large part original gum. S.G. 145s, 145bs, £1,175Subject to 5% tax on Hammer Price in addition to 20% VAT on Buyer's Premium.

Estimate  
£400 to £500

### Lot 3405



(x) Natal 1902-09 mint group on album pages comprising 1902-03 CA to 4/-, 1902 CC 5/- to £1.10, 1904-08 MCA to 2/6d. mint and with £1.10 overprinted "specimen", 1908-09 6d. to £1 and some multiples comprising 1902-03 CA 1d. block of six and 1½d. block of four and 1904-08 MCA ½d. and 2d. in blocks of four with plate number '1' and 5d. block of six; generally fine and fresh mint. S.G. cat. value £2,800+ Subject to 5% tax on Hammer Price in addition to 20% VAT on Buyer's Premium.

Estimate  
£600 to £800

### Lot 3406



(x) Natal 1902-03 1½d. blue-green and 1d. carmine, blocks of twenty-four; the 1½d. block corner marginal with plate number '1', the 1d. block with interpanneau margin at left; the 1½d. with vertical crease affecting four stamps, otherwise fine with almost full original gum. S.G. 127, 128, £500+ Subject to 5% tax on Hammer Price in addition to 20% VAT on Buyer's Premium.

Estimate  
£150 to £200

### Lot 3407



(x) Natal 1902-03 CA 1½d. block of forty-eight and 4d. carmine and cinnamon block of forty-two; full original gum. S.G. 129 and 133, £780+ Subject to 5% tax on Hammer Price in addition to 20% VAT on Buyer's Premium.

Estimate  
£200 to £300

### Lot 3408



(x) Natal 1902-03 CC 5/- dull blue and rose, 10/- deep rose and chocolate, £1 black and bright blue and £1.10 green and violet; large part original gum, good to fine. S.G. 140-143, £1,205 Subject to 5% tax on Hammer Price in addition to 20% VAT on Buyer's Premium.

Estimate  
£400 to £500

**Lot 3409**

(x) Natal 1908-09 MCA £1 purple and black on red, large part original gum. S.G. 171, £425 Subject to 5% tax on Hammer Price in addition to 20% VAT on Buyer's Premium.

Estimate  
£200 to £250

**Lot 3410**

(x) Natal 1904 Official set of six to 1/-, a couple of values with gum bends otherwise fine. S.G. 01-06, £375 Subject to 5% tax on Hammer Price in addition to 20% VAT on Buyer's Premium.

Estimate  
£100 to £150

**Lot 3411**

(x) Northern Nigeria 1910-11 MCA 1/2d. to 10/- set of eleven, large part original gum. S.G. 28-39, £150 Subject to 5% tax on Hammer Price in addition to 20% VAT on Buyer's Premium.

Estimate  
£80 to £100

**Lot 3412**

(x) Nyasaland 1896 1d. to £1 set of ten to £10, overprinted "specimen", the £10 without gum. S.G. 32s-41s, £800 Subject to 5% tax on Hammer Price in addition to 20% VAT on Buyer's Premium.

Estimate  
£300 to £400

**Lot 3413**

(x) Nyasaland 1897-1900 1d. to £1 set of ten to £1 and 1901 colour change set of three to 6d., each overprinted "specimen", large part original gum. S.G. 43s-51s, 57ds-58s, £515 Subject to 5% tax on Hammer Price in addition to 20% VAT on Buyer's Premium.

Estimate  
£250 to £300



**Lot 3414**

(x) Nyasaland 1901 Thomas De la Rue & Co. 1d. imperforate printer's colour sample stamp in red and affixed to small piece of white card (27 x 30mm.), fine Subject to 5% tax on Hammer Price in addition to 20% VAT on Buyer's Premium.

Estimate  
£200 to £250

**Lot 3415**

(x) Nyasaland 1903-04 CA Small format master die proof with uncleared surround and value tablet in black on white glazed card (90 x 60mm.), endorsed 'before hardening' and dated '6 nov. 02'; fine provenance: "Blanic", Spink, April 2021 Subject to 5% tax on Hammer Price in addition to 20% VAT on Buyer's Premium.

Estimate  
£400 to £450

**Lot 3416**

(x) Nyasaland 1903-04 CA 2/6d. frame only die proof in black on white glazed card (90 x 60mm.), endorsed 'before/ hardening' and dated '9 dec. 02'; fine provenance: "Blanic", Spink, April 2021 Subject to 5% tax on Hammer Price in addition to 20% VAT on Buyer's Premium.

Estimate  
£400 to £450

**Lot 3417**

(x) Nyasaland 1903-04 CA 10/- frame only die proof in black on white glazed card (90 x 60mm.), endorsed 'after/ hardening' and dated '30 jan. 03'; fine provenance: "Blanic", Spink, April 2021 Subject to 5% tax on Hammer Price in addition to 20% VAT on Buyer's Premium.

Estimate  
£400 to £450

**Lot 3418**

(x) Nyasaland 1903-04 CA f1 frame only die proof in black on white glazed card (90 x 60mm.), endorsed 'before/ hardening' and dated '29 jan. 03'; fine Subject to 5% tax on Hammer Price in addition to 20% VAT on Buyer's Premium.

Estimate  
£400 to £450

### Lot 3419



(x) Nyasaland 1903-04 CA 1d. to £1 set of nine to £1, each overprinted "specimen", large part original gum, hinged to album page. S.G. 59s-66s, £425 Subject to 5% tax on Hammer Price in addition to 20% VAT on Buyer's Premium.

Estimate  
£200 to £250

### Lot 3420



(x) Nyasaland 1903-04 1d. to £1 set of nine, large part original gum. S.G. 59-66, £700 Subject to 5% tax on Hammer Price in addition to 20% VAT on Buyer's Premium.

Estimate  
£250 to £300

### Lot 3421



(x) Nyasaland 1903-04 CA 2/6d. grey green and green, a block of four from the foot of the sheet; lightly mounted mint, a scarce multiple. S.G. 63, £280+ Subject to 5% tax on Hammer Price in addition to 20% VAT on Buyer's Premium.

Estimate  
£250 to £300

### Lot 3422



(x) Nyasaland 1903-04 CA 4/- dull and bright purple, variety watermark inverted, very light corner crease at lower left, large part original gum; scarce. B.P.A. Certificate (2016). S.G/ 64w, £1,500 Subject to 5% tax on Hammer Price in addition to 20% VAT on Buyer's Premium.

Estimate  
£600 to £800

**Lot 3423**



(x) Nyasaland1903-04 CA£10 grey and blue, overprinted "specimen", large part original gum; fine. S.G. 67s, £500Subject to 5% tax on Hammer Price in addition to 20% VAT on Buyer's Premium.

Estimate  
£200 to £250

**Lot 3424**



(x) Nyasaland1903-04 CA£10 grey and blue, a lightly mounted mint example of this scarce and popular high value; lovely fresh colours, superb. B.P.A. Certificate (2007). S.G. 67, £9,500provenance:Robert Siegel Auction, May 2014Subject to 5% tax on Hammer Price in addition to 20% VAT on Buyer's Premium.

Estimate  
£4,000 to £6,000

**Lot 3425**



(x) Nyasaland1908 CA ½d. to £1 set of nine, large part original gum. S.G. 73-81, £950Subject to 5% tax on Hammer Price in addition to 20% VAT on Buyer's Premium.

Estimate  
£250 to £300

**Lot 3426**



(x) Nyasaland1908-11 MCA3d. frame only die proof in black on white glazed card (90 x 60mm.), endorsed 'before/ hardening' and dated 14 feb. 08'; fineSubject to 5% tax on Hammer Price in addition to 20% VAT on Buyer's Premium.

Estimate  
£350 to £400

**Lot 3427**



(x) Nyasaland1908-11 MCA4d. black and red on yellow, variety watermark inverted, large part original gum. S.G. 76w, £160Subject to 5% tax on Hammer Price in addition to 20% VAT on Buyer's Premium.

Estimate  
£80 to £100

**Lot 3428**



(x) Nyasaland 1908-11 MCA 4/- carmine and black, a block of four, mounted on the upper pair only; fine and a scarce multiple. S.G. 79, £480+ Subject to 5% tax on Hammer Price in addition to 20% VAT on Buyer's Premium.

Estimate  
£250 to £300

**Lot 3429**



(x) Nyasaland 1908-11 MCA £1 purple and black on red, variety serif on 'g', overprinted "specimen", part original gum; some surface rubbing otherwise fine and very rare, possibly unique. S.G. 81cs, (£3,500 for issued stamp with variety) Subject to 5% tax on Hammer Price in addition to 20% VAT on Buyer's Premium.

Estimate  
£2,000 to £2,500

**Lot 3430**



(x) Nyasaland 1908-11 MCA £1 purple and black on red, variety serif on 'g', lightly mounted mint; very fine. S.G. 81c, £3,500 provenance: "Blanic", April 2021 Subject to 5% tax on Hammer Price in addition to 20% VAT on Buyer's Premium.

Estimate  
£2,000 to £2,500

**Lot 3431**



(x) Nyasaland 1908-11 MCA £1 purple and black on red, large part original gum; fine. S.G. 81, £650 Subject to 5% tax on Hammer Price in addition to 20% VAT on Buyer's Premium.

Estimate  
£200 to £250



**Lot 3432**



(x) Nyasaland 1908-11 MCA £10 purple and ultramarine, overprinted "specimen", well-centred, lightly toned perf at foot not showing through to the front of the stamp, large part original gum. S.G. 82s, £1,100 Subject to 5% tax on Hammer Price in addition to 20% VAT on Buyer's Premium.

Estimate  
£400 to £500

**Lot 3433**



(x) Orange Free State 1902 head only die proof in black on white glazed card (90 x 60mm.), dated 'June 10. 1902' in pencil and signed below, fine. Subject to 5% tax on Hammer Price in addition to 20% VAT on Buyer's Premium.

Estimate  
£300 to £400

**Lot 3434**



(x) Orange Free State 1903-04 CA 4d. scarlet and sage-green, variety 'iostagefor' 'postage', large part original gum; fine. B.P.A. Certificate (1951). S.G. 144a, £1,200 Subject to 5% tax on Hammer Price in addition to 20% VAT on Buyer's Premium.

Estimate  
£500 to £600

**Lot 3435**



(x) Orange Free State 1903-04 CA 4d. scarlet and sage-green, variety 'iostagefor' 'postage', a used example; fine. Signed Peter Holcombe and accompanied by his Opinion (1991). S.G. 144a, £475 Subject to 5% tax on Hammer Price in addition to 20% VAT on Buyer's Premium.

Estimate  
£200 to £250

**Lot 3436**



(x) Orange Free State 1905-09 MCA 4d. scarlet and sage-green, variety 'iostage' for 'postage', part original gum. S.G. 150a, £200 Subject to 5% tax on Hammer Price in addition to 20% VAT on Buyer's Premium.

Estimate  
£100 to £150

**Lot 3437**



(x) Rhodesia 1906 Victoria Falls set of six to 5/-, part original gum. S.G. 94-99, £350 Subject to 5% tax on Hammer Price in addition to 20% VAT on Buyer's Premium.

Estimate  
£100 to £150

**Lot 3438**



(x) St. Helena 1903 CC 1/2d. brown and grey-green, watermark inverted, large part original gum, light gum bend. S.G. 55w, £225 Subject to 5% tax on Hammer Price in addition to 20% VAT on Buyer's Premium.

Estimate  
£100 to £150

**Lot 3439**



(x) St. Helena 1908-11 MCA 10/- green and red on green, large part original gum; fine. S.G. 70, £275 Subject to 5% tax on Hammer Price in addition to 20% VAT on Buyer's Premium.

Estimate  
£100 to £150

**Lot 3440**



(x) St. Helena 1922-37 Script 5d. green and deep carmine on green, a horizontal pair from the lower left corner of the sheet with plate number '1', variety cleft rock, very slight diagonal gum bend, large part original gum. S.G. 103, 103c, £250+ Subject to 5% tax on Hammer Price in addition to 20% VAT on Buyer's Premium.

Estimate  
£100 to £150

**Lot 3441**



(x) St. Kitts Nevis 1902 die proof of the Medicinal Spring vignette design in black on white glazed card (90 x 60mm.), endorsed 'before/ hardening' and dated '6 feb. 02', fineSubject to 5% tax on Hammer Price in addition to 20% VAT on Buyer's Premium.

Estimate  
£400 to £500

**Lot 3442**



(x) St. Kitts Nevis 1902 die proof of the Columbus vignette in black on white glazed card (90 x 60mm.), endorsed 'before/ hardening' and dated '3 mar. 02', fineSubject to 5% tax on Hammer Price in addition to 20% VAT on Buyer's Premium.

Estimate  
£400 to £500

**Lot 3443**



(x) St. Lucia 1902-03 CA2d. imperforate colour trial in dull purple and green, the colours of the issued ½d. value, on gummed watermarked paper; large part original gum, fineSubject to 5% tax on Hammer Price in addition to 20% VAT on Buyer's Premium.

Estimate  
£300 to £400

**Lot 3444**



(x) St. Lucia 1902-03 CA2d. imperforate colour trial in dull purple and ultramarine, the colour of the issued 2½d., on gummed watermarked paper; large part original gumSubject to 5% tax on Hammer Price in addition to 20% VAT on Buyer's Premium.

Estimate  
£300 to £400

**Lot 3445**



(x) St. Lucia 1902-03 CA6d. imperforate colour trial in dull green and yellow, on gummed watermarked paper affixed to small piece of archival paper (36 x 40mm.), fineSubject to 5% tax on Hammer Price in addition to 20% VAT on Buyer's Premium.

Estimate  
£350 to £450

**Lot 3446**



(x) St. Lucia 1904-10 MCA 5/- green and carmine, an upper right corner block of four with plate number '1', fine unmounted mint, a scarce multiple. S.G. 76, £340+ Subject to 5% tax on Hammer Price in addition to 20% VAT on Buyer's Premium.

Estimate  
£200 to £250

**Lot 3447**



(x) St. Lucia 1904-10 MCA 1d. carmine and 3d. purple on yellow, each in a part sheet of sixty from the right of the sheet with plate number '1' at top and foot; full original gum, some minor peripheral soiling otherwise fine. S.G. 67, 71, £555 Subject to 5% tax on Hammer Price in addition to 20% VAT on Buyer's Premium.

Estimate  
£200 to £250

**Lot 3448**



(x) St. Vincent 1902 1d. imperforate colour trial in dull green and brown on gummed watermarked paper, taken from the De la Rue record book; fine with part original gum Subject to 5% tax on Hammer Price in addition to 20% VAT on Buyer's Premium.

Estimate  
£300 to £400



**Lot 3449**

(x) St. Vincent 1902-11 group of stamps overprinted or handstamped "specimen" comprising 1d., 2d. 2½d., 1/- and 5/- all showing broken 'm' variety and the 2½d. additionally handstamped 'ultramar', 1902 CA 6d. horizontal marginal pair and 5/- and 1904-11 MCA 5/- all handstamped type SV12; rare, and 1904-11 MCA 2/-, 5/- and £1; fine and fresh Subject to 5% tax on Hammer Price in addition to 20% VAT on Buyer's Premium.

Estimate  
£250 to £300

**Lot 3450**

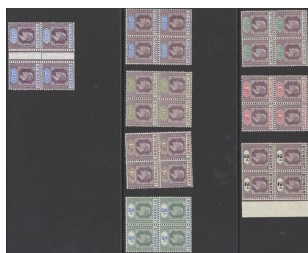
(x) St. Vincent 1902 CA ½d. to 5/- set of nine to 5/-, overprinted "specimen", large part original gum; fine. S.G. 76s-84s, £170 Subject to 5% tax on Hammer Price in addition to 20% VAT on Buyer's Premium.

Estimate  
£80 to £100

**Lot 3451**

(x) St. Vincent 1902 CA ½d. to 5/- set of nine to 5/-, fine mint. S.G. 76-84, £150 Subject to 5% tax on Hammer Price in addition to 20% VAT on Buyer's Premium.

Estimate  
£70 to £100

**Lot 3452**

(x) St. Vincent 1902 CA group of mint blocks of four comprising ½d., 1d., 2d., 2½d. (2, one an interpanneau block), 3d., 6d. and 5/-; lightly mounted or unmounted mint. S.G. 76-82, 84, £480+provenance: Charles Freeland Subject to 5% tax on Hammer Price in addition to 20% VAT on Buyer's Premium.

Estimate  
£250 to £300

**Lot 3453**

(x) St. Vincent 1902-11 used group on album pages comprising the 1902 CA set to 5/- and with the 2d. value in a block of four, 1904-11 MCA set to £1, the 6d., 1/-, 2/- and 5/- values in blocks of four; fine used. S.G. 76-93, £1,380+provenance: Charles Freeland Subject to 5% tax on Hammer Price in addition to 20% VAT on Buyer's Premium.

Estimate  
£400 to £500

### Lot 3454



(x) St. Vincent 1904-11 MCA set of eight to £1, each in a block of four; fine and fresh mint, scarce multiples. S.G. 85-93, £1,400+Subject to 5% tax on Hammer Price in addition to 20% VAT on Buyer's Premium.

Estimate  
£800 to £1,200

### Lot 3455



(x) St. Vincent 1904-11 MCA 1d. dull purple and carmine, a block of four showing variety damaged frame and crown, part original gum. S.G. 86, 86a, £434+Subject to 5% tax on Hammer Price in addition to 20% VAT on Buyer's Premium.

Estimate  
£200 to £250

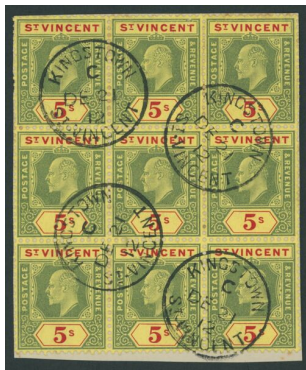
### Lot 3456



(x) St. Vincent 1904-11 MCA 1/- green and carmine, a block of four with slightly misplaced carmine, fine unmounted mint. S.G. 90Subject to 5% tax on Hammer Price in addition to 20% VAT on Buyer's Premium.

Estimate  
£80 to £100

### Lot 3457



(x) St. Vincent 1904-11 MCA 5/- green and red on yellow, a block of nine, used and tied to piece by 'kingstown/ st. vincent' c.d.s. cancellations (21 Dec. 1912); fine and a scarce large used multiple. S.G. 92, £540+Subject to 5% tax on Hammer Price in addition to 20% VAT on Buyer's Premium.

Estimate  
£250 to £300

### Lot 3458



(x) St. Vincent 1904-11 MCA £1 purple and black on red, marginal example with plate number '1', large part original gum; fine. S.G. 93, £275Subject to 5% tax on Hammer Price in addition to 20% VAT on Buyer's Premium.

Estimate  
£150 to £200

### Lot 3459



(x) St. Vincent 1904-11 MCA £1 purple and black on red, lightly mounted mint; fine. S.G. 93, £275Subject to 5% tax on Hammer Price in addition to 20% VAT on Buyer's Premium.

Estimate  
£100 to £150

### Lot 3460



(x) Seychelles 1903 CA set of eleven from 2c. to 2r.25c. all showing variety dented frame, a few minor fault but generally good to fine mint, a lovely group. S.G. 46a-56a, £5,550Subject to 5% tax on Hammer Price in addition to 20% VAT on Buyer's Premium.

Estimate  
£2,000 to £2,500



### Lot 3461



(x) Seychelles 1903 CA 3c. dull green, an upper-left corner block of eighteen with plate number '1' showing varieties slotted frame [1/4] and dented frame [1/6], full original gum; fine and an attractive positional piece. S.G. 47, 47a, 47 var. Subject to 5% tax on Hammer Price in addition to 20% VAT on Buyer's Premium.

Estimate  
£150 to £200

### Lot 3462



(x) Seychelles 1903 surcharges 3c. on 15c. ultramarine, 3c. on 18c. sage-green and carmine and 3c. on 45c. brown and carmine, each variety dented frame; large part original gum, fine. S.G. 57a-59a, £1,025 Subject to 5% tax on Hammer Price in addition to 20% VAT on Buyer's Premium.

Estimate  
£500 to £600

### Lot 3463



(x) Seychelles 1903 3c. on 15c. ultramarine, variety dented frame, very lightly mounted. S.G. 57a, £275 Subject to 5% tax on Hammer Price in addition to 20% VAT on Buyer's Premium.

Estimate  
£100 to £150

### Lot 3464



(x) Seychelles 1906 MCA almost complete set of ten (no 45c.) all showing variety dented frame, the 12c. in a marginal block of four, generally fresh and fine mint. S.G. 60a-66a, 68a-70a, £4,110 Subject to 5% tax on Hammer Price in addition to 20% VAT on Buyer's Premium.

Estimate  
£1,500 to £2,000

### Lot 3465



(x) Sierra Leone 1903 CA set of thirteen to £1 and 1907-12 ½d. and 1d. all overprinted "specimen" and additionally handstamped "ultramar" in violet; fine. S.G. 73s-85s var., 99s-100s var. Subject to 5% tax on Hammer Price in addition to 20% VAT on Buyer's Premium.

Estimate  
£150 to £200



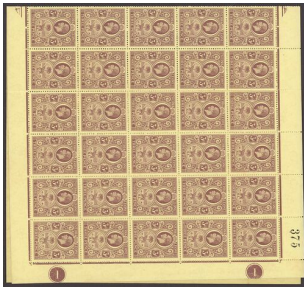
**Lot 3466**



(x) Sierra Leone 1884-91 1d. carmine, block of twenty-four with margins on either side, full original gum; fine. S.G. 28, £432+Subject to 5% tax on Hammer Price in addition to 20% VAT on Buyer's Premium.

Estimate  
£150 to £200

**Lot 3467**



(x) Sierra Leone A group of large mint multiples (3) comprising 1896-97 1d. dull mauve and carmine block of twenty-four, 1904-05 MCA 1d. dull purple and rosin block of forty-eight and 1912-21 MCA 3d. purple complete sheet of sixty with plate number '1' and current number '375'; fine and scarce multiples. S.G. 42, 87, 116b, £600+Subject to 5% tax on Hammer Price in addition to 20% VAT on Buyer's Premium.

Estimate  
£300 to £400

**Lot 3468**



(x) Sierra Leone 1903 CA set to £1 overprinted "specimen", the 5/- showing variety damaged frame and crown, very rare and possibly unique. S.G. 73s-85s, 84s var. Subject to 5% tax on Hammer Price in addition to 20% VAT on Buyer's Premium.

Estimate  
£400 to £600

**Lot 3469**



(x) Sierra Leone 1904-05 MCA 1½d. dull purple and black, variety damaged crown and frame, lightly mounted mint. S.G. 88a, £200 Subject to 5% tax on Hammer Price in addition to 20% VAT on Buyer's Premium.

Estimate  
£100 to £150

**Lot 3470**



(x) Sierra Leone 1904-05 MCA 1/- black and green, variety damaged frame and crown, large part original gum; fine. S.G. 95a, £350 Subject to 5% tax on Hammer Price in addition to 20% VAT on Buyer's Premium.

Estimate  
£180 to £200

**Lot 3471**



**(x) Sierra Leone 1907-12 MCA 1d. red, variety damaged crown and frame, large part original gum; fine. S.G. 100b, £350 Subject to 5% tax on Hammer Price in addition to 20% VAT on Buyer's Premium.**

**Estimate  
£150 to £200**

**Lot 3472**



**(x) Sierra Leone 1907-12 MCA 1d. carmine, variety damaged crown and frame, large part original gum; fine. S.G. 100b, £350 Subject to 5% tax on Hammer Price in addition to 20% VAT on Buyer's Premium.**

**Estimate  
£150 to £200**

**Lot 3473**



**(x) Sierra Leone 1897 Fiscal 2½d. on 1/- dull lilac, a block of four showing Types 8 (3) including one with square stop and Type 10 (slight thin), unused with original gum; a scarce and attractive multiple. Pascal Scheller Certificate (2022). S.G. 63, 65, £1,310 Subject to 5% tax on Hammer Price in addition to 20% VAT on Buyer's Premium.**

**Estimate  
£200 to £300**

**Lot 3474**



(x) Sierra Leone 1897 Fiscal 2½d. on 1/- dull lilac, overprinted type 11, fine used; a little toned. S.G. 66, £450 Subject to 5% tax on Hammer Price in addition to 20% VAT on Buyer's Premium.

**Estimate**  
£100 to £150

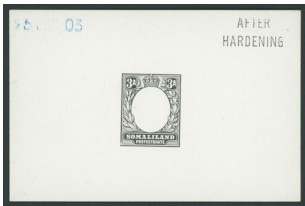
**Lot 3475**



(x) Somaliland Protectorate 1904 CA1903 2a. frame only die proof in black on white glazed card (90 x 60mm.), endorsed 'after/ hardening' and dated '26 jun. 03', fine Subject to 5% tax on Hammer Price in addition to 20% VAT on Buyer's Premium.

**Estimate**  
£300 to £400

**Lot 3476**



(x) Somaliland Protectorate 1904 CA1903 3a. frame only die proof in black on white glazed card (90 x 60mm.), endorsed 'after/ hardening' and dated '25 jun. 03', fine Subject to 5% tax on Hammer Price in addition to 20% VAT on Buyer's Premium.

**Estimate**  
£300 to £400

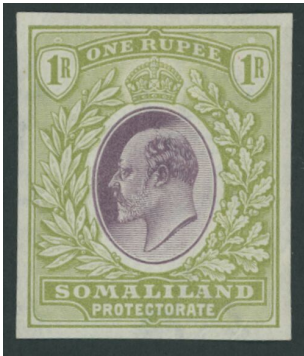
**Lot 3477**



(x) Somaliland Protectorate 1904 CA1r. imperforate colour trial in brownish purple and drab on gummed watermarked paper, large part original gum; fine Subject to 5% tax on Hammer Price in addition to 20% VAT on Buyer's Premium.

**Estimate**  
£400 to £500

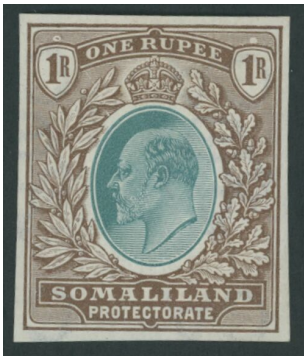
**Lot 3478**



(x) Somaliland Protectorate 1904 CA1r. imperforate colour trial in brownish-purple and sage green on gummed watermarked paper, large part original gum; fine Subject to 5% tax on Hammer Price in addition to 20% VAT on Buyer's Premium.

Estimate  
£400 to £500

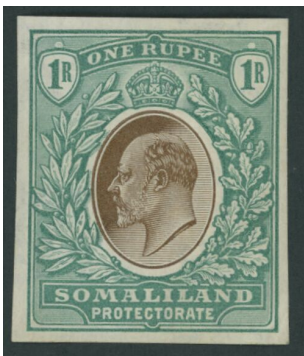
**Lot 3479**



(x) Somaliland Protectorate 1904 CA1r. imperforate colour trial in dull blue-green and brownish purple on gummed watermarked paper, large part original gum; fine Subject to 5% tax on Hammer Price in addition to 20% VAT on Buyer's Premium.

Estimate  
£400 to £500

**Lot 3480**



(x) Somaliland Protectorate 1904 CA1r. imperforate colour trial in brownish grey and dull blue-green on gummed watermarked paper, large part original gum; fine Subject to 5% tax on Hammer Price in addition to 20% VAT on Buyer's Premium.

Estimate  
£400 to £500

**Lot 3481**



(x) Somaliland Protectorate 1904 CA1r. imperforate colour trial in brownish purple and dull blue on gummed watermarked paper, large part original gum; fine Subject to 5% tax on Hammer Price in addition to 20% VAT on Buyer's Premium.

Estimate  
£400 to £500



**Lot 3482**



(x) Somaliland Protectorate 1904 CA1r. imperforate colour trial in brownish purple and dull pale orange on gummed watermarked paper, large part original gum; fine Subject to 5% tax on Hammer Price in addition to 20% VAT on Buyer's Premium.

Estimate  
£400 to £500

**Lot 3483**



(x) Somaliland Protectorate 1903 1a. carmine, variety 'brit sh' and 1903 1/2a. green, variety 'somal.land'; large part original gum. S.G. 2a and 25d, £280 Subject to 5% tax on Hammer Price in addition to 20% VAT on Buyer's Premium.

Estimate  
£120 to £150

**Lot 3484**



(x) Somaliland 1904 CA set of thirteen to 5r. each in a block of four, the 1r. with plate number '1', large part original gum, fine and scarce multiples. S.G. 32-44, £1,100+ Subject to 5% tax on Hammer Price in addition to 20% VAT on Buyer's Premium.

Estimate  
£700 to £900

**Lot 3485**



(x) Somaliland 1905-11 MCA set of eleven to 12a. each in a block of four, with some additional blocks, sixteen blocks in all; fine mint. S.G. 45-59, £400+ Subject to 5% tax on Hammer Price in addition to 20% VAT on Buyer's Premium.

Estimate  
£250 to £300

**Lot 3486**



(x) Somaliland Protectorate 1905-11 MCA 1a. grey-black and red, a block of fifteen from the top of the sheet with plate number '1' and interpanneau margin at left; a few minor stain spots in the margin only, full original gum. S.G. 46, £435 Subject to 5% tax on Hammer Price in addition to 20% VAT on Buyer's Premium.

Estimate  
£200 to £250

**Lot 3487**



(x) Somaliland 1912-19 MCA 1r. green, a block of ten from the left of the sheet with plate number '1' at top and foot; full original gum. S.G. 69, £250+ Subject to 5% tax on Hammer Price in addition to 20% VAT on Buyer's Premium.

Estimate  
£120 to £160

**Lot 3488**



(x) Somaliland Protectorate 1904 Official set of five to 1r., each overprinted "specimen", large part original gum. S.G. O10s-O15s, £160 Subject to 5% tax on Hammer Price in addition to 20% VAT on Buyer's Premium.

Estimate  
£80 to £120

**Lot 3489**



(x) Somaliland Protectorate 1904 Official 8a. grey-black and pale-blue, variety no stop after 'm', used with part Berbera c.d.s., fine. B.P.A. Certificate (2022). S.G. O13a, £950 Subject to 5% tax on Hammer Price in addition to 20% VAT on Buyer's Premium.

Estimate  
£350 to £400

### Lot 3490



(x) Somaliland 1904 CA set of thirteen to 5r. and 1904-05 Official set of five to 1r., each overprinted "specimen" and affixed to archival page and handstamped 'postes et telegraphes/ madagascar' in pink; from the Madagascar Postal authority archives, rare. S.G. 32s-44s, O10s-O15s Subject to 5% tax on Hammer Price in addition to 20% VAT on Buyer's Premium.

Estimate  
£400 to £500

### Lot 3491



(x) Southern Nigeria 1901-02 CA complete set of eleven to 10/- and including the ½d. and 1d. sepia shades, fine mint. S.G. 1-9, £250+ Subject to 5% tax on Hammer Price in addition to 20% VAT on Buyer's Premium.

Estimate  
£120 to £150

### Lot 3492



(x) Southern Nigeria 1903 2½d. frame only die proof in black on white glazed card (90 x 60mm.) endorsed 'before/ hardening' and dated '20 nov. 03', fine provenance: W. C. Hinde Subject to 5% tax on Hammer Price in addition to 20% VAT on Buyer's Premium.

Estimate  
£400 to £500

### Lot 3493



(x) Southern Nigeria 1902 £1 frame only die proof in black on white glazed card (90 x 60mm.), endorsed 'before/ hardening' and dated '21 jun. 02', fine provenance: W. C. Hinde Subject to 5% tax on Hammer Price in addition to 20% VAT on Buyer's Premium.

Estimate  
£400 to £500

### Lot 3494



(x) Southern Nigeria 1903-11 mint group on album pages comprising 1903-04 CA set to £1, 1904-09 MCA set to £1, 1907-11 MCA to £1 and a few blocks of four of low values; fine and fresh mint. S.G. cat. value £1,600+ Subject to 5% tax on Hammer Price in addition to 20% VAT on Buyer's Premium.

Estimate  
£500 to £600

### Lot 3495



(x) Southern Nigeria 1903-04 CA ½d. to £1 set of eleven to £1, fine mint. S.G. 10-20, £675 Subject to 5% tax on Hammer Price in addition to 20% VAT on Buyer's Premium.

Estimate  
£300 to £400

**Lot 3496**



(x) Southern Nigeria 1903-04 CA £1 green and violet, fine mint. S.G. 20, £475 Subject to 5% tax on Hammer Price in addition to 20% VAT on Buyer's Premium.

Estimate  
£200 to £250

**Lot 3497**



(x) Southern Nigeria 1904-09 MCA £1 green and violet, large part original gum; fine. S.G. 32, £325 Subject to 5% tax on Hammer Price in addition to 20% VAT on Buyer's Premium.

Estimate  
£140 to £160

**Lot 3498**



(x) Southern Nigeria 1907 3d. frame only die proof in black on white glazed card (90 x60mm.), endorsed 'before/ hardening' and dated '15 apr. 07', fine provenance: W. C. Hinde Subject to 5% tax on Hammer Price in addition to 20% VAT on Buyer's Premium.

Estimate  
£400 to £500

**Lot 3499**



(x) Southern Nigeria 1912 MCA set of twelve to £1, large part original gum. S.G. 45-56, £275 Subject to 5% tax on Hammer Price in addition to 20% VAT on Buyer's Premium.

Estimate  
£140 to £160

**Lot 3500**



(x) Transvaal 1902 CA 2½d. black and blue, variety watermark inverted and overprinted "specimen"; a rare combination, without gum. S.G. 247w/s var. Subject to 5% tax on Hammer Price in addition to 20% VAT on Buyer's Premium.

Estimate  
£200 to £250



Lot 3501



(x) Transvaal1902 CA 2½d. black and blue, watermark inverted, large part original gum. S.G. 247w, £100Subject to 5% tax on Hammer Price in addition to 20% VAT on Buyer's Premium.

Estimate  
£50 to £70

Lot 3502



(x) Transvaal1903 CA £5 orange-brown and violet, large part original gum; fine. B.P.A. Certificate (1979). S.G. 259, £2,250Subject to 5% tax on Hammer Price in addition to 20% VAT on Buyer's Premium.

Estimate  
£1,000 to £1,500

Lot 3503



(x) Transvaal1904-09 MCA £1 green and violet, large part original gum; fine. S.G. 272, £425Subject to 5% tax on Hammer Price in addition to 20% VAT on Buyer's Premium.

Estimate  
£200 to £250

Lot 3504



(x) Transvaal1905-09 MCA ½d. deep green with watermark inverted and 1d. scarlet, watermark error, cabled anchor, both fine used. S.G. 273aw, 274b, £480Subject to 5% tax on Hammer Price in addition to 20% VAT on Buyer's Premium.

Estimate  
£200 to £250

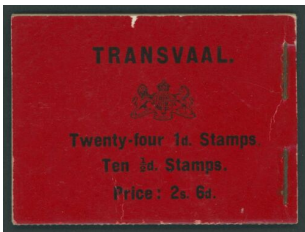
**Lot 3505**



(x) Transvaal1909 MCA prepared for use but not issued 2d. grey, overprinted "specimen", large part original gum. S.G. 277s, £300Subject to 5% tax on Hammer Price in addition to 20% VAT on Buyer's Premium.

Estimate  
£150 to £200

**Lot 3506**



(x) Transvaal1909 2/6d. booklet, black on red cover stapled at right, incomplete but with two panes of the 1/2d. and two panes of the 1d. values; scarce even incomplete. S.G. SB3, £4,000 for complete bookletSubject to 5% tax on Hammer Price in addition to 20% VAT on Buyer's Premium.

Estimate  
£500 to £700

**Lot 3507**



(x) Trinidad1852-60 (March 1855, Second Issue) 1d. greenish blue, cancelled by numeral '1', slightly creased at top otherwise fine. S.G. 17, £850Subject to 5% tax on Hammer Price in addition to 20% VAT on Buyer's Premium.

Estimate  
£200 to £250

**Lot 3508**



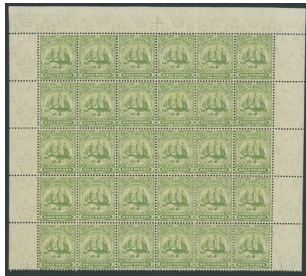
(x) Trinidad & Tobago1904-09 MCA 5/- deep purple and mauve, a corner block of four with plate number '1', some perf separation and reinforcement in places; large part original gum. S.G. 144, £320+Subject to 5% tax on Hammer Price in addition to 20% VAT on Buyer's Premium.

Estimate  
£150 to £200

**Lot 3509**

(x) Turks and Caicos 1900 6d. mauve, horizontal pair from the top of the sheet with printer's mark, right stamp without watermark; full original gum. S.G. 106 var Subject to 5% tax on Hammer Price in addition to 20% VAT on Buyer's Premium.

Estimate  
£70 to £80

**Lot 3510**

(x) Turks and Caicos 1905-08 MCA 1/2d. green, a block of thirty from the top of the sheet with margins on three sides, full original gum; fine. S.G. 110, £210+ Subject to 5% tax on Hammer Price in addition to 20% VAT on Buyer's Premium.

Estimate  
£100 to £150

**Lot 3511**

(x) Zanzibar 1895-96 set of fifteen to 5r., large part original gum. S.G. 3-21, £600 Subject to 5% tax on Hammer Price in addition to 20% VAT on Buyer's Premium.

Estimate  
£200 to £300

**Lot 3512**

(x) Zanzibar 1896 (Dec.) 1/2a. to 5r. set of fifteen all used on large philatelic cover to London and re-directed back to Zanzibar, each stamp tied by Zanzibar squared circle cancellation; fine. S.G. 156-174 Subject to 5% tax on Hammer Price in addition to 20% VAT on Buyer's Premium.

Estimate  
£150 to £200

**Lot 3513**

(x) Zanzibar 1904 Surcharges (4) comprising 'One' on 4 1/2a. orange, 'One' on 4 1/2a. blue-black, 'Two & Half' on 7 1/2a. mauve and 'Two & Half' on 8a. grey-olive; all additionally handstamped 'ultramar' in blue, part to large part original gum. S.G. 205-209 var. Subject to 5% tax on Hammer Price in addition to 20% VAT on Buyer's Premium.

Estimate  
£150 to £200

**Lot 3514**

(x) Zanzibar 1908-09 a group of imperforate plate proofs in close to the issued colours from 1c. to 75c. (all single examples excepting the 25c. which is a pair), 1r. strip of four from the foot of the sheet and 2r. horizontal pair; all without gum except the 25c. and 2r. pairs, fine Subject to 5% tax on Hammer Price in addition to 20% VAT on Buyer's Premium.

Estimate  
£600 to £800

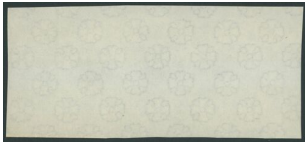
**Lot 3515**



(x) Zanzibar 1908-09 1c. to 5r. group of imperforate plate proofs (no 25c.) in close to the issued colours, without gum; fine  
Subject to 5% tax on Hammer Price in addition to 20% VAT on Buyer's Premium.

Estimate  
£300 to £400

**Lot 3516**



(x) Zanzibar 1908-09 piece of multiple rosette watermark paper (134 x 60mm.) as used for this issue, as well as contemporary issues of Papua and Sudan  
Subject to 5% tax on Hammer Price in addition to 20% VAT on Buyer's Premium.

Estimate  
£150 to £200

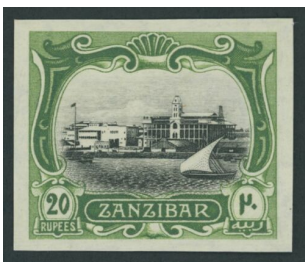
**Lot 3517**



(x) Zanzibar 1908-09 10r. blue-green and brown, imperforate plate proof on gummed watermarked paper, fine  
Subject to 5% tax on Hammer Price in addition to 20% VAT on Buyer's Premium.

Estimate  
£200 to £250

**Lot 3518**



(x) Zanzibar 1908-09 20r. black and yellow-green, imperforate plate proof on watermarked paper; without gum  
Subject to 5% tax on Hammer Price in addition to 20% VAT on Buyer's Premium.

Estimate  
£200 to £250

**Lot 3519**



(x) Zanzibar 1908-09 100r. black and steel-blue, imperforate plate proof, horizontal pair from the left of the sheet on watermarked paper, without gum  
Subject to 5% tax on Hammer Price in addition to 20% VAT on Buyer's Premium.

Estimate  
£300 to £400

**Lot 3520**



(x) Zanzibar 1908-09 200r. brown and greenish-black, imperforate plate proof on gummed watermarked paper; large part original gum  
Subject to 5% tax on Hammer Price in addition to 20% VAT on Buyer's Premium.

Estimate  
£300 to £400



**Lot 3521**



(x) Zanzibar 1908-09 10r. to 200r. group of seven high values, each overprinted "specimen", large part original gum; fine S.G. 239s-245s, £1,160 Subject to 5% tax on Hammer Price in addition to 20% VAT on Buyer's Premium.

Estimate  
£400 to £500

**Lot 3522**



(x) Zanzibar 1908-09 100r. black and steel-blue, unused without gum; fine. S.G. 244, £1,300 Subject to 5% tax on Hammer Price in addition to 20% VAT on Buyer's Premium.

Estimate  
£300 to £400

**Lot 3523**



(x) Zanzibar 1908-09 200r. brown and greenish black, a couple of slightly ragged perfs at top otherwise fine with large part original gum. S.G. 245, £1,800 Subject to 5% tax on Hammer Price in addition to 20% VAT on Buyer's Premium.

Estimate  
£700 to £900

**Lot 3524**



(x) Zanzibar 1908-09 200r. brown and greenish black, unused without gum. S.G. 245, £1,800 Subject to 5% tax on Hammer Price in addition to 20% VAT on Buyer's Premium.

Estimate  
£600 to £800

**Lot 3525**



(x) Collections and Ranges A large group of mainly King Edward VII British Empire mint multiples including part sheets, plate blocks, imprint blocks etc. and with multiples from Antigua, Bahamas, Bechuanaland, Bermuda, British Honduras, British Levant, Cape of Good Hope, Ceylon, Dominica, K.U.T., Leeward Islands, Mauritius, Montserrat, Nyasaland, St. Helena, St. Vincent, Virgin Islands, etc., generally good to fine mint; high catalogue value Subject to 5% tax on Hammer Price in addition to 20% VAT on Buyer's Premium.

Estimate  
£1,400 to £1,600

## Lot 3526



(x) Collections and RangesBritish Indian OceanA mint collection of full and part sets on album pages including Mauritius with 1900-05 set to 5r., 1902 'Postage & Revenue' set to 2r.50, 1904-07 set to 1r., 1910 set to 10r. (plus some blocks of four to 50c.), Seychelles with 1903 set to 2r.25, 1906 set to 2r.25, Zanzibar with 1904 set to 5r., 1908-09 part set with values including 3r., 10r. and 20r. (no gum); generally good to fine. S.G. cat. value £2,500+Subject to 5% tax on Hammer Price in addition to 20% VAT on Buyer's Premium.

Estimate  
£500 to £600

## Lot 3527



(x) Collections and RangesBritish West IndiesA collection of mint complete and part sets including Antigua with 1903-07 set to 5/-, 1908-17 set to 2/-, Bahamas with 1902 set to £1, Barbados with 1905 set to 2/6d., 1906 Nelson Centenary to 1/-, 1909-10 set to 1/-, British Honduras 1904 set to \$5, Dominica 1903-07 set to 5/-, 1907-08 set to 5/-, Grenada with 1902 and 1904-06 sets, Jamaica with 1905-11 Arms set to 5/- and Queen Victoria set to 2/-, Leeward Islands including 1902 set to 5/-, 1905-08 set to 1/-, 1907 set to 5/-, Montserrat with 1903 set to 5/-, 1904-08 part set to 2/6d., 1908-14 set to 5/-, St. Lucia with 1904-10 set to 5/-, St. Vincent with 1902 set to 5/- and 1904-11 set to £1, Trinidad 1904-09 set to £1, Turks and Caicos 1909-11 set to £1, etc. S.G. cat value £6,500Subject to 5% tax on Hammer Price in addition to 20% VAT on Buyer's Premium.

Estimate  
£2,000 to £3,000

## Lot 3528



(x) Collections and RangesSouthern AfricaA group of part and complete mint sets on album pages including Bechuanaland 1904-13 set to 1/- and 1910 Postal Fiscal 6d., Cape of Good Hope with 1902-04 set to 5/- (and a few low value multiples), Orange River Colony with 1903-04 set to 5/- (and a few multiples), Transvaal with 1902 set to 10/-, 1903 1/-, 2/- and £1, 1904-09 set to £1, some multiples etc., generally fine. S.G. £2,000+Subject to 5% tax on Hammer Price in addition to 20% VAT on Buyer's Premium.

Estimate  
£500 to £700

## Lot 3529



(x) Collections and RangesWest AfricaA collection of complete and part fine mint sets comprising Gambia 1902-05 set to 3/-, 1904-06 set to 2/- and 1909 set to 3/-, Gold Coast with 1902 set to 20/-, 1904-06 set to 2/6d., 1907-13 set to 5/-, Lagos with 1904 Specimen set to 10/- and 1904 and 1904-06 part sets with values to 5/-, Northern Nigeria with 1905-07 1/- and 2/6d., 1910-11 set to 10/- and with 5/- block of four, Sierra Leone with 1903 1/-, 2/- and £1, 1904-05 part set to 5/-, 1907-12 set to £1, Somaliland with 1904 set to 5r., 1905 set to 12a., etc. generally fine mint. S.G. cat. value in excess of £3,600Subject to 5% tax on Hammer Price in addition to 20% VAT on Buyer's Premium.

Estimate  
£1,000 to £1,500

## Lot 3530



(x) Collections and RangesA mint group on album pages including Brunei with 1907 set to \$1, Ceylon with 1903-05 set to 2r.25, 1904-05 MCA with blocks of four of the 2c., 3c., 4c., 30c. 75c. and 1r.50, 1910-11 set to 5r. and blocks of four of the 25c., 50c., 1r. and 5r., Federated Malay States with 1900-01 with shades to 50c., 1904-10 with the set to \$2 and with additional shades and maldives with 1906 Ceylon overprint part set to 5c.; generally fine and fresh mint. Cat. value in excess of £1,400Subject to 5% tax on Hammer Price in addition to 20% VAT on Buyer's Premium.

Estimate  
£300 to £400

## Lot 3531



(x) Collections and RangesThe balance of a mint collection including Bermuda with 1906-10 set, British Solomon Islands 1907 set to 1/-, 1908-11 set to 5/-, British New Guinea 1906 part set to 6d., British Virgin Islands with 1904 set to 5/-, Cook Islands with 1902 set to 1/-, Fiji with 1903 part set to 5/-, New Hebrides with 1908 and 1910 overprint sets, British Levant with 1902-05 to 24pi. on 5/-, 1905-08 1pi. on 2½d. and 2pi. on 5d., 1911-13 including 12pi. on 2/6d. and 24pi. on 5/-, 1905-12 LEVANT overprint set to 1/-, 1909 set to 5pi. pn 1/-, Morocco Agencies including Spanish Currency 1903-05 set to 2p. (CA) and 1903-05 set to 2p. (MCA), 1907-12 set to 12p. on 10/-, 1907-13 Great Britain overprint set to 2/6d., Malta with 1903 set to 1/- and St. Helena 1903 set to 2/- and 1908 to 10/-; generally fine. S.G. cat. value in excess of £3,600Subject to 5% tax on Hammer Price in addition to 20% VAT on Buyer's Premium.

Estimate  
£700 to £900