

SPINK

e-Catalogue

395 - Jewelry, Silver & Objects of Vertu - e-Auction

Lot 1



A Superb Pair of Silver Salvors by William Bennett, 1808 Oval shape with central eagle crest. Reeded border. Reeded feet. Width 35.6cm. Total weight 1,905g.

Estimate
\$2,000 to \$3,000

Lot 2



A Silver Salver by Richard Rugg, 1775 Circular shape with superb central motif inscribed 'JOUR DE MA VIE' (day of my life). Triple reeded border. Claw ball feet. Width 32.8cm. Total weight 1,088g.

Estimate
\$600 to \$800

Lot 3



A Set of Six Hungarian Silver Dessert Plates Reeded border. Rubbed hallmarks. 2nd quarter 20th Century. Width 19.8cm. Total weight 1,088g.

Estimate
\$400 to \$500

Lot 4



A Pair of Silver Plates by Borgila, Sweden 1934 Modernist design. Stamped 'STERLING' and 'BORGILA SWEDEN'. Width 24.25cm. Total weight 907g.

Estimate
\$800 to \$1,200

Lot 5



A Pair of Silver Sauce Tureens by Samuel Hennell, 1811 Regular form with lion crest to the lids, impressive lion motifs with rounds handles, on four ball feet. Width 17.5cm. Total weight 816g.

Estimate
\$1,200 to \$1,800

Lot 6



A Pair of Edwardian Silver Candlesticks Height 29cm. Bases reinforced with cement. Dents, knocks and nibbles commensurate with age. Clean and ready for use. Total weight 2,040g.

Estimate
\$700 to \$1,000

Lot 7



A Silver Plated Caviar Set by Christofle Includes glass caviar dish and lid, ice bowl and balance. Albi pattern, circa 1968. Stamped 'CHRISTOFLE FRANCE' and 'OC'. Total weight 846.71g.

Estimate
\$300 to \$500

Lot 8



Two Silver Plated Dishes by Christofle Octagonal Art deco style. Stamped 'CHRISTOFLE FRANCE' and 'OC'. Diameter 10cm. Also included two silver plated dishes with scalloped edge. Stamped 'DG'. Diameter 13.5cm. Total weight 375.76g.

Estimate
\$100 to \$150

Lot 9



A Silver Plated Condiment Holder by Christofle Art deco style with hinged lid, glass inset and octagonal base. Stamped 'CHRISTOFLE FRANCE' and 'OC'. Height 12.5cm. Total weight 342.50g.

Estimate
\$100 to \$150

Lot 10

**A Pair of Russian Silver Sabbath Candlesticks. Stamped '84'.
Height 33cm.**

**Estimate
\$500 to \$700**



Lot 11

A Substantial Silver Tea Caddy by Hunt & Roskell Late Storr & Mortimer Hinged lid with finial. Hallmarked. Very heavy. Height 14.7.8cm. Width 12.5cm.

**Estimate
\$500 to \$700**



Lot 12

A Queen Anne Style Silver Tea Caddy by William Hutton & Sons Circa 1904. Hinged silver lid with ebony finial. Height 13cm. Total weight 209g. Hallmarked.

**Estimate
\$400 to \$600**



Lot 13

A 19th Century French Silver Cup and Cover. Cover ornately decorated with floral motifs and Greek key design. Impressive horsehead handle. Height 13.3cm.

**Estimate
\$180 to \$220**



Lot 14

A 19th Century Silver Seal by Ferdinand Barbedienne. Designed as a classical warrior, probably Mars. Height 9cm. A fine, heavy seal. Ferdinand Barbedienne (1810-1892) was the son of a small farmer from Calvados, he started his career as a dealer in wallpaper in Paris. In 1838 he went into partnership with Achille Collas (1795-1859), who had just invented a machine to create miniature bronze replicas of statues. Together they started a business selling miniatures of antique statues from museums all over Europe. From 1843 they extended their scope by reproducing the work of living artists and also diversified by making enameled household objects. With the outbreak of the Franco-Prussian war in 1870 the firm briefly had to switch to cannon founding owing to the shortage of metals but resumed business afterwards. Following Barbedienne's death in 1892, he was buried in the Père-Lachaise cemetery and the firm was carried on by his nephew Gustave Leblanc until 1952. Among the principal artists reproduced by the firm were Antoine Louis Barye and Auguste Rodin.

Estimate
\$600 to \$800

Lot 15

Tiffany. A Silver Reproduction of a Quaich by Paul Revere. The original quaich is part of The Clearwater Collection housed in the Metropolitan Museum of Art. Stamped '925'. Diameter 12.4cm.

Estimate
\$300 to \$500

Lot 16

A Silver Salver by Tiffany. The oval salver on scrolled feet with heavily carved shell border. Engraved with monogram. Does not rest even. No returns. 35.2cm wide.

Estimate
\$250 to \$350

Lot 17

A Silver Wine Coaster by Tiffany. Foliate border. Engraved with monogram. Diameter 23cm. Dents and marks commensurate with age and use.

Estimate
\$120 to \$180

Lot 18

A Japanese Silver Stem Vase. Profusely decorated with floral pattern. Height 12.7cm.

**Estimate
\$400 to \$600**



Lot 19

A Pair of Japanese Silver Koi Okinomo. 5 1/4 x 14" and 4 1/2 x 11". 20th Century. Well-detailed and of excellent workmanship. With polished black wood oval footed stand.

**Estimate
\$3,000 to \$5,000**



Lot 20

A Pair of Japanese Silver Fighting Frogs. Height 8.5cm. Width 14cm.

**Estimate
\$400 to \$600**



Lot 21

A Thai Silver Bon Bon Dish and Cover. Profusely carved and ornately designed as a pumpkin. Length approximately 21cm. Height approximately 14.5cm. Stamped 'T100'. A fine, heavy, decorative piece.

**Estimate
\$700 to \$1,000**



Lot 22

A Pair of Silver Salad/Serving Spoons. Bowl with shell design and stem with religious motif. Width 17.5cm.

**Estimate
\$100 to \$150**



Lot 23



A Silver Novelty 'Cat and Mouse' Cheese Scoop by Garrard. Designed and a large cat chasing a mouse. With push piece mechanism. Width 21.5cm.

**Estimate
\$600 to \$800**

Lot 24



A 19th Century Silver Presentation Dish Inset with George IV Coronation Medal. Width 10.8cm

**Estimate
\$250 to \$350**

Lot 25



Two Silver Dishes One circular with pierced design, 12.5cm wide, the other 13cm wide.

**Estimate
\$50 to \$75**

Lot 26



A Silver Bowl by Gorham Marie Antoinette pattern. Engraved with monogram. 27.2cm wide.

**Estimate
\$100 to \$150**

Lot 27



A Set of Twelve Silver Mounted Glass Coasters by Frank M. Whiting & Co. Diameter 9.5cm. Reeded border. Glass with star shape design.

**Estimate
\$300 to \$400**

Lot 28



Two Silver Bowls The smaller with foliate design, engraved with monogram, 23cm wide. The larger with pierced design, engraved with monogram, 28.5cm wide.

**Estimate
\$120 to \$180**

Lot 29



A Silver and Mother of Pearl Magnifying Glass. The large, heavy novelty magnifying glass with sectional mother of pearl and white handle decorated with scrollwork and motif. Unmarked. Height approximately 34cm.

**Estimate
\$200 to \$300**

Lot 30



A Silver Novelty Salt Celler. In the form of a ball with geometric patterns.

**Estimate
\$40 to \$60**

Lot 31



A Matched Pair of Decanter Stoppers. Unmarked white metal. Both with elaborate ploom finial. One base slightly bent but stands straight. Heights 10.2cm and 9.8cm.

**Estimate
\$100 to \$150**

Lot 32



A Set of Four Shell Dishes. Unmarked white metal. Width 7.4cm.

**Estimate
\$80 to \$120**

Lot 33



An Early 20th Century Silver Matched Dressing Table Set. To include; cut glass powder box with silver lid, silver canister and silver rectangular box, each heavily decorated with putti. Rectangular box width 15cm. Canister height 8cm. Powder box height 5.8cm.

**Estimate
\$300 to \$500**

Lot 36



A Pair of Silver Salt Cellars by Dunchin Height 13.2cm. Weighted. Moderate wear commensurate with age.

**Estimate
\$100 to \$150**

Lot 37



A Silver Teapot Stamped 'Sterling'. Floral design with vacant cartouche. Height approximately 22.5cm.

**Estimate
\$100 to \$150**

Lot 38



A Set of Three Silver-Gilt Presentation Spoons. Hammered ornate design throughout. The bowl with torque shape. Width 18.5cm.

**Estimate
\$100 to \$150**

Lot 39



Ensko, New York. A Silver Reproduction of a Bowl by Paul Revere Height 5.8cm. Diameter 10.3cm.

**Estimate
\$60 to \$100**

Lot 40



A Set of Four Salts Square shaped on paw feet. Unmarked white metal. Width 4.4cm. Total weight 99.04g.

**Estimate
\$30 to \$50**

Lot 41



An Impressive Collection of Vesta CasesMost examples silver. Art Nouveau and later. Various designs. An interesting lot for a collector. Must be seen. No returns.

Estimate
\$400 to \$500

Lot 42



A Set of Six Silver Tot GlassesArt nouveau foliate design with glass insets. Each stamped 'SILVER 950'. Height 6.5cm.

Estimate
\$80 to \$120

Lot 43



A Group of ObjectsTo Include; a silver shoe brush, an unmarked napkin ring, a silver clothes hook, an art nouveau miniature magnifying glass, a Mexican silver agate mounted box, a silver coffee spoon and a silver tea spoon. Some damages. Must be seen. No returns.

Estimate
\$50 to \$75

Lot 44



A Group of Silver Cigarette CasesFour included; largest 12cm wide, two nice art deco examples.

Estimate
\$100 to \$150

Lot 45



A Group of Silver Plate To include; a silver plated mug by Meriden B. Company (height 8.7cm), A silver plated and ceramic egg dish and cover by Asprey and a silver plated caviar dish and cover by Rockford with an unassociated knife.

Estimate
\$100 to \$150

Lot 46



A Korean Silver and Enamel Cruet SetConsisting of two cruet bowls and covers with spoons and tray. Each in eggplant glaze and depicting mythical Korean scenes. Second half 20th Century. Bowls and tray each stamped 'SILVER 99%' and 'MADE IN KOREA'. Length of tray 23cm. Total weight 645.49g.

Estimate
\$120 to \$180

Lot 47



A 19th Century Silver Plated Tea Caddy. Hinged silver lid with lion mask handles. Cartouche featuring presentation of the London Rowing Club, 1865. Height 13.7cm. Hallmarked.

**Estimate
\$50 to \$70**

Lot 48



A Group of Silver Spoons Including a matched pair of pierced salad servers by W.M. Rogers, a serving spoon by R. Wallace, two silver ladles (one by W.M. Rogers) and a large serving spoon by Walker & Hall.

**Estimate
\$150 to \$250**

Lot 49



A Large Group of Miniature Silver Salts Various sizes and designs (36). Must be seen. No returns.

**Estimate
\$200 to \$400**

Lot 50



A Large Group of Silver To include; a dwarf candlestick, a shoe brush, a clothes brush, three swan knife rests, two forks, a salad server, a silver dish, a silver plate, a cup and a comport. Damages throughout. Must be seen. No returns.

**Estimate
\$100 to \$150**

Lot 51



A Group of Silver & Silver Plated Flatware. To include; six Southern Colonial silver dinner forks, five presumed silver dinner knives with stainless steel handles, some unmarked or with rubbed hallmarks, one Holmes and Edwards silver salad server, eight Southern Colonial silver tea spoons, one Southern Colonial silver bouillotte spoon, one engraved silver coffee spoon, two Rogers Bros. and one Medco silver plated spoons. Must be seen. No returns.

**Estimate
\$200 to \$300**

Lot 52



Stamp Boxes and Related ItemsEnglish Boxes1925 Chester, silver postbox shaped money box with hinged lid and coin slot at top, fine.

**Estimate
\$350 to \$450**

Lot 53



Stamp Boxes and Related ItemsEnglish Boxes1905 inkwell and stamp box combined (makers mark unclear), the capstan style well with hinged lid at top surmounted with a cherub reading a book, which is used as the stamp holder; a fine and most unusual combination.

**Estimate
\$400 to \$500**

Lot 54



Stamp Boxes and Related ItemsUSA BoxesThree items including two silver three compartment boxes, one with small rectangular design, the base engraved with curlique scrolls with hinged lid at top engraved with a knights helmet surrounded by scroll work, the other stamp box marked Sterling by Lebkeucher & Co, plain base with applied floral banding; also a silver double coil dispenser, plain cylinder design with the lower half for dispensing the coil stamps, the smaller box hinged at top probably for dispensing Airmail labels; fine and attractive group

**Estimate
\$300 to \$350**

Lot 55



Stamp Boxes and Related ItemsUSA BoxesTiffany & Co sterling silver two compartment box, the base with an engraved beaded design around the edges with hinged lid at top engraved with a symmetrical pattern around the border, opening to two sloped compartments; fine and scarce

**Estimate
\$150 to \$200**

Lot 56



Stamp Boxes and Related ItemsRelated ItemsA Sampson Mordan novelty propelling pencil shaped as a Victorian Post Box with collection times and initials v.r.; pencil mechanism temperamental otherwise fine. Rare.

**Estimate
\$800 to \$1,000**

Lot 57



Stamp Boxes and Related ItemsEnglish Boxes1901
Birmingham, vesta case in the form of a whistle with patterned design and hinged lid at bottom, fine.

Estimate
\$300 to \$350

Lot 58



Stamp Boxes and Related ItemsRelated Items1906
Birmingham, silver stamp plunger with dark wooden handle at top, fine.

Estimate
\$350 to \$450

Lot 59



Stamp Boxes and Related ItemsEnglish Boxes1949 London,
silver single compartment box, in form of a knife box with decorative engraved front and sloped hinged lid, fine.

Estimate
\$350 to \$450

Lot 60



Stamp Boxes and Related ItemsRelated ItemsSilver letter scale
likely by Levi & Solomon, semicircular design mounted on a scalloped edge base, with celluloid plaque at front marked "british postal scale", showing wear to the face plate which would show weights and rates for letters, books, packets and newspapers and indistinct makers mark; otherwise fine and scarce.

Estimate
\$400 to \$500

Lot 61



Stamp Boxes and Related ItemsEnglish BoxesA gilded brass
miniature letter scale and stamp case combined in the form of an envelope (likely by Joseph Allen) the reverse modelled as the back of an envelope opening to a single compartment, the front showing weights and rates with chain attachment at top and letter clip at foot. Scarce.

Estimate
\$200 to \$300

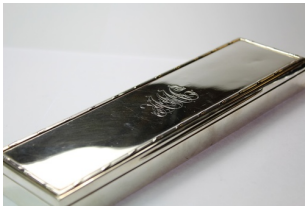
Lot 62



Stamp Boxes and Related ItemsUSA BoxesUSA silver three compartment box in decorative hollow design with beaded edge around the base and the lid, opening to three single slopes; also a similarly designed silver notepad and stamp holder combined, fine and attractive.

Estimate
\$900 to \$1,000

Lot 63



Stamp Boxes and Related ItemsEnglish Boxes1947 London, silver large six compartment with plain design, hinged lid at top with stripes and leaf edging and engraved initials at top, opening to six slopes and one horizontal concave section to the back, fine.

Estimate
\$650 to \$750

Lot 64



Stamp Boxes and Related ItemsRelated ItemsA gilded brass miniature letter scale and stamp case combined in the form of a Maltese Cross, the reverse with a hinged opening to a single compartment, the front showing weights and rates with chain attachment at top and letter clip at the bottom. Scarce.

Estimate
\$800 to \$1,000

Lot 65



Stamp Boxes and Related ItemsEnglish Boxes1939 Birmingham, silver letter scale and stamp box combined, the former with plaque at front showing weights and rates and with a wooden back, the stamp box adjacent with three sloped compartments and hinged lid with 'stamps' embossed in blue on top, fine.

Estimate
\$1,000 to \$1,200

Lot 66



Stamp Boxes and Related ItemsUSA BoxesTiffany & Co, three compartment bronze boxes (2) showing the "Zodiac" pattern, the hinged lid at top opening to three concave compartments, generally fine and rare.

Estimate
\$200 to \$250

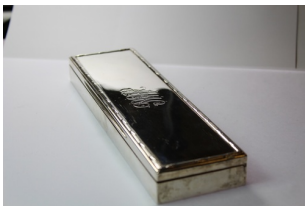
Lot 67



Stamp Boxes and Related ItemsRelated Items1847 brass stamp case with embossed head of Queen Victoria and single spring loaded dispenser compartment, fine and rare.

Estimate
\$300 to \$400

Lot 68



Stamp Boxes and Related ItemsUSA BoxesUSA silver card case in the form of an envelope bearing engraved 3c. stamp addressed to 'Miss Frances G Jenkins' in Mass and showing June 5 'Brookline Mass' c.d.s, the reverse showing return address; hinged lid opening to single gold coloured compartment, attractive and fine.

Estimate
\$200 to \$300

Lot 69



Stamp Boxes and Related ItemsRussian laquered papier mache three compartment box, the hinged lid painted with a scene of a three horse drawn Troika, opening to two red painted slopes; the laquer on the lid crackled otherwise fine and scarce.

Estimate
\$300 to \$400

Lot 70



Stamps and Related ItemsEnglish Boxes1905, Birmingham, silver stamp box and rocker blotter combined, by S. Blanckensee & Sons Ltd., very fine and rare.

Estimate
\$500 to \$600

Lot 71

Stamp Boxes and Related ItemsEnglish Boxes1910 silver stamp, vesta and card case combined by Fletcher & Co. with engraved initials on front, hinged lid to the left opening to four compartments, striking surface on right side, rare and attractive.

Estimate
\$300 to \$400

Lot 72

Stamp Boxes and Related ItemsEnglish Boxes1903 Birmingham, letter scale and stamp box combined, plaque at front (worn) mounted on a rectangular base standing on ball feet, with a wooden pull-out drawer at front opening to the stamp compartment; fine and scarce.

Estimate
\$300 to \$400

Lot 73

Stamp Boxes and Related ItemsEnglish Boxes1901 Birmingham, silver triple compartment box, plain design with decorative edging on base, hinged lid at top with three windows showing stamps, opening to three sloped compartments, fine.

Estimate
\$250 to \$350

Lot 74

Stamp Boxes and Related ItemsCollectionsA selection of Porcelain stamp boxes (9) of different sizes and designs with seven having two compartments, many French examples with floral designs and bronze band features on hinged lids, a generally fine group.

Estimate
\$500 to \$600

Lot 75

Stamp Boxes and Related ItemsCollectionsA group comprising a letter scale and stamp boxes (4) including a French 1930c. black bakerlite ten compartment box, the lift off lid at top opening to ten slopes surrounding a central compartment, a rosewood two compartment box, plain square design, very slight cracking to the veneer on the lid; 1901c ivory stamp box with two compartments and 1890c. two compartment blonde tortoiseshell box with loose lid; a single arm pendulum scale with fan shaped face plate engraved "weight" and "postage", an interesting group.

Estimate
\$350 to \$450

Lot 76



Stamp Boxes and Related Items
A group of silver stamp boxes and related items (15+) with a range of different hallmarks including a 1906 Birmingham letter scale with worn face plate, a USA decorative three compartment box, 1904 Birmingham silver three compartment box and moistener combined (2), both with damaged lids, an enamelled silver brooch of a Sudan stamp, 1908 Birmingham single compartment stamp case, 1896 Chester stamp and card case combined with one compartment and two stamp holders under the hinged lid; stamp box and note pad holder combined by Kendall - Paris, a box in the form of a cradle, very mixed condition and viewing essential, many items with faults and in need of repairing nevertheless a valuable group.

Estimate
\$2,200 to \$2,500

Lot 77



A Spinel and Diamond Ring. The rectangular deep blue synthetic spinel set in a 14 carat yellow gold band and flanked with two brilliant cut diamonds. Total diamond weight 0.3 carats. Total weight 6.82g.

Estimate
\$400 to \$600

Lot 77A



A 1950s Style Ruby and Diamond Necklace, Earrings and Ring Suite. Set in heavy yellow gold. Of typical spray design. Set throughout with cabochon rubies and diamonds. Good quality rubies. An attractive suite.

Estimate
\$2,000 to \$3,000

Lot 78



A Yellow Sapphire and Diamond Pendant. Pale yellow oval sapphire surrounded by old cut diamonds mounted in yellow metal (presumed gold). Sapphire with light scratches and abrasions. Sapphire approximately 3.25 carats. Total weight 5.13g. Lacking chain.

Estimate
\$2,000 to \$4,000

Lot 79



A Ruby and Pearl Bracelet Designed as a single line of pearls interspersed with flower shaped spacers mounted with rubies. Stamped 'WRA' and '750'. Length 19.5cm. Total weight 35.75g.

Estimate
\$600 to \$800

Lot 80



A Ruby and Diamond Necklace The necklace designed in the Middle Eastern taste with pierced pear shaped pendant mounted with one ruby surrounded with diamond chips. The clasp mount with one pear shaped diamond surrounded by diamond chips. Stamped '750'. Length 40cm. Ruby approximately 1.5 carats. Pear shaped diamond approximately 0.2 carats. Total weight 65g.

Estimate
\$4,000 to \$6,000

Lot 81



A Gold Coin Necklace Unmarked yellow metal chain with synthetic dark red stones terminating in 1870 Newfoundland \$2 coin. Total weight 45.12g.

Estimate
\$100 to \$150

Lot 82



A Gold Bangle Clasp Stamped '916. Bangle stamped '22K'. Total weight 33.68g.

Estimate
\$1,500 to \$2,000

Lot 83



A Diamond and Enamel Brooch/FobThe circular brooch with a single diamond mounted on blue enamel with graduated diamond border. Principle diamond approximately 1 carat. Significant chip/abrasion to principle diamond resulting in loss. High quality enameling. Diamonds bright, lively and well matched. Later yellow metal chain. Unmarked. Total weight 8.3g.

Estimate
\$2,000 to \$3,000

Lot 84



An Edwardian Pearl Fringe NecklaceOf typical Edwardian design, with attractive central flower head motif and pearl drops. Unmarked yellow metal. Purchased from Spink & Son Ltd. In original box of issue. Length 41cm. Total weight 16.94g.

Estimate
\$600 to \$900

Lot 85



An Amethyst and Diamond Ring.The large oval amethyst set to a plain unmarked yellow band flanked by three small diamonds on each side to a scroll design.

Estimate
\$300 to \$500

Lot 86



An Pair of Amethyst Ear Studs. Stamped '10k'. Fixed post settings for pierced ears. Width 1cm.

Estimate
\$200 to \$300

Lot 87



A Star Ruby Ring Circa 1970sThe small round star ruby cabochon set in 14 carat yellow gold mounted with five rubies in an abstract design. Rubies possibly synthetic.

Estimate
\$80 to \$120

Lot 88



A Pink Sapphire Ring Circa 1970s.The large round pink sapphire set in 14 carat yellow gold in an abstract design. Sapphire synthetic.

Estimate
\$80 to \$120

Lot 89



A Sapphire and Diamond Line BraceletConsisting of twenty-two oval sapphires with diamond spacers. Push piece clasp. Stamped '750'. Length 17cm. Total weight 7.5g.

Estimate
\$1,500 to \$2,000

Lot 90



A Victorian Banded Agate and Ruby LocketThe large oval yellow metal (presumed gold) locket mounted with banded agate. The reverse with typical Victorian star design with large central ruby. The interior reveals glass photo frame. Later yellow metal chain. Total weight 33.4g.

Estimate
\$300 to \$400

Lot 91



An Edwardian Diamond PendantDesigned as a circle of leaves interspersed with brilliant cut diamonds surrounding a larger central diamond with two diamond drops and a line of small diamonds leading to a larger diamond drop. Total weight 4.1g.

Estimate
\$600 to \$800

Lot 92



A Topaz Ring Circa 1970s.The large pale yellow topaz set in 14 carat yellow gold in an abstract design. Topaz possibly synthetic.

Estimate
\$80 to \$120

Lot 93



A Coral and Diamond Ring Circa 1970s.The pale pink coral cabochon set in 14 carat yellow gold and mounted with five small diamonds in an abstract design.

Estimate
\$150 to \$250

Lot 94



A Diamond Leaf Bar BroochDesigned as a diamond set leaf mounted to a diamond set bar. Unmarked white metal. Length 7.3cm. Also included a 9ct gold gem set ring (some damages). Total weight 8.6g.

Estimate
\$100 to \$150

Lot 95



A Spinel and Diamond RingSpinel synthetic. One diamond missing. Unmarked. Would benefit from a clean. Total weight 7.8g.

Estimate
\$300 to \$500

Lot 96



An Eternity Ring18 carat yellow gold. Half mounted with seven brilliant cut diamonds. Modern. Ring size 6.5 (M). Total approximate diamond weight 0.75 carats. Total weight 3.8g.

Estimate
\$600 to \$800

Lot 97



An Eternity Ring18 carat white gold. Fully mounted with brilliant cut diamonds. Modern. Ring size 6.5 (M). Total approximate diamond weight unknown. Total weight 3.2g.

Estimate
\$1,000 to \$1,500

Lot 98



An Eternity Ring 18 carat white gold. Fully mounted with baguette cut diamonds. Modern. Ring size 6.5 (M). Total approximate diamond weight 2 carats. Total weight 4.2g.

Estimate
\$1,500 to \$2,500

Lot 99



An Eternity Ring 18 carat white gold. Half mounted with baguette cut diamonds. Modern. Ring size 6.5 (M). Total approximate diamond weight 0.85 carats. Total weight 3.6g.

Estimate
\$600 to \$800

Lot 100



A Tahitian Pearl and Diamond Pendant The Tahitian pearl mounted with a single brilliant cut diamond to an unmarked yellow metal chain. Diamond bright and lively. Pearl with slight abrasion to the reverse but not visible when worn. Total weight 6.3g.

Estimate
\$150 to \$250

Lot 101



An Art Deco Diamond and Gold Brooch and Earclip Suite The superb two-tone gold brooch designed as two flowers with a leaf to the base. The central brooch flower mounted with a large oval cut diamond. The brooch leaf mounted with two trilliant cut diamonds. Clasp stamped '14K'. Total length of brooch 7.6cm. Earclips with fixed post settings. High quality diamonds. Total weight 26.3g.

Estimate
\$1,200 to \$1,800

Lot 102



Two Chinese Bangles The first nephrite and unmarked yellow metal with safety chain. The second comprised of four jadeite and agate panels, clasp stamped 'K585'.

Estimate
\$100 to \$150

Lot 103



Two Eternity RingsBoth 18 carat white gold. Both fully mounted with diamonds; one ring with square cut channelled diamonds, the other with baguette cut diamonds. Modern. Ring sizes 5.5 (K) and 6.5 (M). Total approximate diamond weight 2 carats. Total weight 7.5g.

Estimate
\$700 to \$900

Lot 104



Five Eternity RingsAll 18 carat white gold. Each half mounted with diamonds; four rings with brilliant cut diamonds and one ring with baguette cut diamonds. Modern. Ring sizes 6.5 (M). Total approximate diamond weight 2.65 carats. Total weight 15.8g.

Estimate
\$1,200 to \$1,800

Lot 105



Two Eternity RingsOne 18 carat yellow gold, the other 18 carat white gold. Abstractly mounted with very small brilliant cut diamonds. Modern. Ring sizes 6.75 (M1/2). Total approximate diamond weight unknown. Total weight 11.8g.

Estimate
\$500 to \$700

Lot 106



A Zircon and Diamond Ring.The small round zircon set in 14 carat yellow gold mounted in diamonds in a target design. Diamonds possibly synthetic.

Estimate
\$80 to \$120

Lot 107



An Eternity Ring18 carat yellow gold. Half mounted with eight medium sized and three small brilliant cut diamonds. Modern. Ring size 5.75 (K1/2). Total approximate diamond weight 0.75 carats. Total weight 5.3g.

Estimate
\$400 to \$500

Lot 108



Three Eternity RingsTwo rings 18 carat, one ring 14 carat, all white gold. Each fully mounted with matching square cut channelled diamonds. Modern. Ring sizes 6.5 (M). Total approximate diamond weight 3 carats. Total weight 10.7g.

Estimate
\$900 to \$1,200

Lot 109



A Rhinestone and Enamel Necklace and Bracelet Suite by Pennino Circa 1950s. Necklace length 42cm. Bracelet length 18.5cm. Pennino Brothers Jewelry was founded by Oreste, Frank and Jack Pennino in 1926 and based in New York City. It designed and manufactured costume jewelry using rhinestones set in gold plate, sterling, vermeil or rhodium-plated base metal.

**Estimate
\$80 to \$120**

Lot 110



An Eternity Ring 18 carat white gold. Half mounted with baguette cut diamonds. Modern. Ring size 6.5 (M). Total approximate diamond weight 1 carat. Total weight 4.1g.

**Estimate
\$1,000 to \$1,500**

Lot 111



An Eternity Ring 18 carat white gold. Half mounted with brilliant cut diamonds. Modern. Ring size 6.5 (M). Total approximate diamond weight 1 carat. Total weight 4.2g.

**Estimate
\$1,000 to \$1,500**

Lot 112



An Opal and Sapphire Ring Circa 1970s. The 14 carat gold ring set with four white opals and seven small sapphires in an abstract design.

**Estimate
\$80 to \$120**

Lot 113



A Group of Rings. To include; a 10 carat signet ring, a 14 carat ring with crown design, a 14 carat high school ring and an intaglio ring with rubbed hallmarks

**Estimate
\$150 to \$250**

Lot 115



A Massive Group of Jewelry Mostly costume with some hallmarked pieces to include; 11 yellow metal necklaces (one signed Christian Dior, one stamped '925', some heavy), 3 pearl necklaces, 19 brooches, 20 pairs of ear clips (one pair signed Christian Dior, one pair probably Niels Erik From), 11 loose ear clips (one signed Tiffany), 11 assorted bracelets, cuffs and bangles (two bracelets both marked '925' and '14K'), 2 tie pins, a hat pin, a citrine mounted fob chain, a bead necklace, a pearl ring, 2 pendants, 3 wristwatches (signed Waltham, Elgin and Wittnauer respectively) and watch ring signed 'RICHARD'. A dealer's lot worth close attention. Varied condition throughout. Sold as is. No returns. Total weight 3,800g.

Estimate
\$1,000 to \$1,500

Lot 116



A Sri Lankan Blue Sapphire Light blue oval sapphire. Some nibbles. Approximately 1.6 carats.

Estimate
\$800 to \$1,200

Lot 117



A Sri Lankan Blue Sapphire Superb medium blue oval sapphire. Some nibbles. Approximately 3 carats.

Estimate
\$4,000 to \$6,000

Lot 118



A Sri Lankan Blue Sapphire Vibrant medium blue round sapphire. Abrasions and some nibbles. Approximately 2.5 carats.

Estimate
\$2,000 to \$3,000

Lot 119



A Sri Lankan Pink Sapphire Attractive light pink round sapphire. Approximately 3 carats.

Estimate
\$3,000 to \$5,000

Lot 120



A Sri Lankan Blue Sapphire Light blue oval sapphire. Approximately 1.75 carats.

Estimate
\$1,000 to \$1,500

Lot 121



A Sri Lankan Blue Sapphire Medium/Light blue oval sapphire. Some scratches. Approximately 1.4 carats.

Estimate
\$800 to \$1,200

Lot 122



A Group of Sri Lankan Blue Sapphires The largest a medium/light blue oval sapphire, with significant abrasion, approximately 0.8 carats. Two smaller blue round sapphires also included.

Estimate
\$100 to \$150

Lot 123



A Group of Loose Semi-Precious StonesTo include: An oval topaz (approx. 8 carats), a rectangular citrine (approx. 8 carats), an oval cabochon cut cat's eye chrysoberyl (approx. 5 carats), a rectangular blue sapphire (approx. 1.5 carats, probably Australian), two green tourmalines (the largest approx. 3.25 carats), two red tourmalines (the largest approx. 4 carats), a multi-stone garnet brooch. Mixed condition throughout. Must be seen. No returns.

Estimate
\$100 to \$150

Lot 124



Two SapphiresThe largest, orange oval sapphire with peach hues (approximately 4 carats). The smaller round yellow sapphire with honey hues (approximately 1.5 carats).

Estimate
\$120 to \$180

Lot 125



A Group of Loose Precious and Semi-Precious StonesTo include: A square pale aquamarine with significant abrasions (approx. 2.8 carats), two oval emeralds (approx. 0.8 carats each), two amethyst, two red/pink garnets and one white sapphire. Mixed condition throughout. Must be seen. No returns.

Estimate
\$100 to \$150

Lot 126



A Purple SapphireAttractive light purple sapphire with rose hues. Some small scratches. Approximately 1.8 carats.

Estimate
\$120 to \$180

Lot 127



A Raw Jasper Specimen

Estimate
\$50 to \$75

Lot 128



Breitling. A Gentleman's Stainless Steel Chronograph Wristwatch. White dial. Arab numerals. Minute track. Steel hands. Circa 1950. Black leather strap. Diameter 40mm including crown.

**Estimate
\$800 to \$1,200**

Lot 129



A Gentleman's Gold Plated Doxa Conquistador Wristwatch Circa 1970s. Champagne dial. Gold colored baton markers. Gold colored hands. Date aperture at 3 o'clock. Leather strap. Wear throughout. Must be viewed. No returns.

**Estimate
\$100 to \$150**

Lot 130



Tissot. A Gentleman's Stainless Steel Automatic Wristwatch Circa 1990s. White rectangular dial. Roman numerals. Steel hands. Brown leather strap. Diameter 35mm including crown.

**Estimate
\$80 to \$120**

Lot 131



Tissot. A Gentleman's Gold Plated Automatic Wristwatch Circa 1970s. White dial. Baton markers and Arab numerals. Gold plated hands. Black leather strap. Diameter 35m including crown.

**Estimate
\$150 to \$200**

Lot 131A



Omega. A Gentleman's Gold Plated Wristwatch, Circa 1960s. Champagne dial. Gold colored hands. Gold colored markers with Arabic numeral for 12 o'clock. Seconds dial at 6 o'clock. Gold plated flexible strap.

**Estimate
\$800 to \$1,200**

Lot 132



Omega. A Gentleman's Gold Plated Constellation Wristwatch Circa 1960s. White dial. Baton markers. Gold plated hands. Brown leather strap. Diameter 37mm including crown.

**Estimate
\$200 to \$300**

Lot 133



Rolex. A Gentleman's Stainless Steel Oyster Perpetual Datejust Wristwatch Circa 1982 Silvered Dial. Diameter 35mm. Gold baton markers. Gold hands. Steel bezel. Serial number: 7250724. Good condition. Wear commensurate with age. Box and papers present. Total weight 90.5g.

**Estimate
\$3,700 to \$4,200**

Lot 133A



Rolex. A Gentleman's Stainless Steel Air King Wristwatch. White circular dial. Gold plated hands. Gold plated baton markers. Stainless steel case. Brown leather strap. Inscription to the reverse of case.

**Estimate
\$1,500 to \$2,000**

Lot 134



Omega. A Gentleman's Stainless Steel and Gold Plated Constellation Wristwatch Circa 1982 Silvered Dial. Diameter 33mm. Gold colored baton markers. Gold colored and steel hands. Gold plated bezel. Black leather strap. Good condition. Wear commensurate with age. Total weight 45.5g.

**Estimate
\$1,200 to \$1,500**

Lot 134A



Omega. A Gentleman's Gold Plated Constellation Wristwatch, Circa 1960s. Two tone champagne dial. Gold plated hands. Gold colored pointed markers. Brown leather strap.

**Estimate
\$800 to \$1,200**

Lot 135



Rolex. A Gentleman's Gold and Steel Oyster Perpetual Datejust Wristwatch Circa 1975 Champagne Dial. Diameter 35mm. Gold baton markers. Gold hands. Gold bezel. Serial number: 7278390. Recently serviced and in excellent condition. Total weight 95.33g.

**Estimate
\$10,000 to \$15,000**

Lot 136



Longines. A Gentleman's Gold Admiral Automatic Wristwatch Circa 1960s White dial. Baton markers. Gold and steel hands. Later metal strap. Case stamped '14K'. Case with inscription to the reverse. Diameter 36m including crown.

**Estimate
\$300 to \$500**

Lot 137



Longines. A Gentleman's Gold Filled Wristwatch Circa 1920sWhite dial. Arab Numerals. Possibly later steel hands. Seconds dial at 6 o'clock. Worn black leather strap. Numerals badly faded. Diameter 36m including crown.

Estimate
\$200 to \$300

Lot 138



Juvenia. A Gentleman's Stainless Steel Chronometer 36000 Automatic Wristwatch Circa 1960sChampagne dial. Baton markers. Gold plated hands. Date dial at 3 o'clock. Worn brown crocodile strap. Diameter 35m including crown.

Estimate
\$100 to \$150

Lot 139



A Ladies Art Deco Diamond Cocktail WatchWhite enamel dial with Arabic numerals. Black steel hands. Seconds dial at six o'clock. The shoulders mounted with four large brilliant cut diamonds. The bezel and shoulders further mounted with numerous old cut diamonds. Later American strap. Dial dirty and in need of a clean. Movement not currently functioning. Total weight 12.6g.

Estimate
\$1,400 to \$1,800

Lot 140



Jaeger LeCoultre. A Ladies Duoplan Wristwatch Circa 1930 Art deco black dial. White hands. White Arabic numerals. Dial stamped 'JAEGER LECOULTRE', 'DUO PLAN' and 'SWISS'. Case number '390'. Case Stamped '18'. Later strap with safety. Clasp stamped '750'. Total weight 16.61g. The Duoplan was first produced in 1927 and was uniquely built on two overlaid planes thus giving its name and enabling a compact movement with a larger balance wheel for greater stability and accuracy.

Estimate
\$1,000 to \$1,500

Lot 141



Cartier. A Ladies Stainless Steel and Yellow Gold Santos Wristwatch Silver dial with black Roman numerals. Inner minute track. Blue steel sword shaped hands. Secret Cartier signature at X. 18K yellow gold bezel punctuated with 8 signature screws. Scratch resistant sapphire crystal. Quartz movement. Hidden butterfly clasp. Serial number 090261727. Original box included. Total weight 43.3g.

Estimate
\$800 to \$1,200

Lot 142



Rolex. A Ladies Stainless Steel and Gold Datejust Wristwatch Circa 2000s. White dial. Gold Roman numerals. Gold hands. Date at 3 o'clock. Diameter 26mm including crown. Good working condition.

**Estimate
\$2,000 to \$4,000**

Lot 143



A Ladies Art Deco Ruby and Diamond Cocktail WatchRectangular peach dial. Roman numerals. Steel hands. Mounted with six small square cut rubies and two brilliant cut diamonds. Later flexible strap. Dial 15mm including crown.

**Estimate
\$200 to \$300**

Lot 144



Piaget. A Ladies Diamond Polo Wristwatch Circa 198518k Gold dial mounted with diamond lines. Gold hands. Dial stamped 'PIAGET'. Case stamped 'PIAGET' and 'Quartz'. Case number '82635'. Serial number '419674'. Rubbed hallmarks. With original leather strap. Total weight 23.15g.

**Estimate
\$800 to \$1,200**

Lot 145



A Gold Doxa Wristwatch. Circa 1960s. Champagne dial. Gold Arab numerals and baton markers. Gold colored hands. Yellow metal strap. Wear throughout. Must be viewed. No returns.

**Estimate
\$300 to \$400**

Lot 146



An Art Deco Ladies Cocktail Watch. Circa 1920s. Champagne dial. Gold colored Arab numerals. Gold colored hands. Yellow metal chain link bracelet with leather extension. Case presumed to be low carat gold, possibly 8k or 10k. Wear throughout. Must be viewed. No returns.

**Estimate
\$150 to \$200**

Lot 146A



Bulova. A Gentleman's Gold Plated Wristwatch, Circa 1960s. White dial. Baton markers. Gold colored hands. Flexible strap. Strap damaged. Dial in need of a clean.

**Estimate
\$80 to \$120**

Lot 147



A Group of Wristwatches. To include; A Hamilton gold filled wristwatch circa 1920s with later metal strap and personal inscription, A Paul Dominique gold plated wristwatch circa 1950s. A Swiss Gentleman's wristwatch circa 1950s with brown Bulova strap and a stainless steel Minerva wristwatch. Extensive wear to each. Viewing recommended. No returns.

**Estimate
\$80 to \$120**

Lot 147A



A Late 19th Century Gold Half Hunter Pocket/Stop Watch White enamel dial with rose border. Gold hands. Blue Roman numerals. Gold case decorated with floral design. Some wear.

**Estimate
\$200 to \$300**

Lot 148



A Group of Pocket Watches. To include; A Waltham gold plated pocket watch with seconds dial at 6 o'clock, an Elgin gold plated art deco octagonal pocket watch with personal initials and green cabochon crown and a Telescope silver pocket watch. Viewing recommended. No returns.

**Estimate
\$40 to \$60**

Lot 148A



Tiffany. A Gold Pocket Watch, Circa 1882 White enamel dial. Steel hands. Black baton markers. Second's dial at 6 o'clock. Minute track. Stamped 'Tiffany & Co. New York'. Associated chain. Ex F.W. Woerz Collection. A fine large size pocket watch.

**Estimate
\$3,000 to \$5,000**

Lot 149



A Fine Gold and Enamel Lorgnette Art deco style handle with blue enamel channeling terminating in arrowhead design. Disguised slide locking mechanism. Bridge stamped '14K'. Total weight 32.82g.

**Estimate
\$200 to \$400**

Lot 150



A Gilt Metal Gem Set Compact The lid overlaid with pierced decorated floral and foliate panel inset with various synthetic rubies and sapphires, lapis lazuli, amethyst, peridot and paste stones against a gilt ground. The interior enclosing mirrored lid. Fine engine turning throughout. Total weight 110.62g.

**Estimate
\$150 to \$250**

Lot 151



Cartier. A Vendome Oval Gold Plated Ballpoint PenHoused in original red leather case. Also included is a gold plated lighter by Dunhill in original case of issue. Total weight 94.6g.

**Estimate
\$150 to \$300**

Lot 152



A Group of Cigarette LightersIncluding one malachite example (height 6cm), a brass dog with amber color eyes and a brass owl with green cabochon eyes both by Florenza.

**Estimate
\$50 to \$75**

Lot 154



A Russian Imperial Porcelain EggWhite porcelain with imperial cipher. Circa 1915. Height approximately 6.2cm.

**Estimate
\$100 to \$150**

Lot 155



A Russian Cloisonne Enamel EggOf traditional design and mounted with cabochon red stones. Silver gilt interior. Associated triple bird feet stand. Height 10cm. Width 7.6cm.

**Estimate
\$1,000 to \$2,000**

Lot 156



A Group of Photogravures Four included. 19th Century and later. Largest 8.5cm x 8cm. Some damages. Must be seen. No returns.

Estimate
\$100 to \$150

Lot 157



A large German Bronze Battle-Scene Plate. Diameter: 11 ¼". Menden Foundry, 1947. Deep bowl with a nude woman at the center, her hands behind her back; around the wide rim, ancient-style figures of warriors, on foot and mounted, wage war on each other. Green and sea-green patina.

Estimate
\$300 to \$500

Lot 158



A Fine Japanese Mixed Metal Crab Okinomo. Late Meiji-Taisho. Three articulated solid silver crabs, each approx. 1 1/3 x 3", scuttle about on a bronze netting. Maker's characters at bottom of each crab. With carved wood stand.

Estimate
\$1,200 to \$1,800

Lot 159



A Pair of Japanese Antique Bronze Cranes and Turtle Okinomo. Height: 12 ½"; Length: 15 ½". Early 20th Century. Finely detailed, the cranes red-capped. Set on a wood base.

Estimate
\$1,500 to \$2,000

Lot 160



A Pair of Fine Blue & White Porcelain Ginger Jars. Height: 7". Riverine scenes.

Estimate
\$500 to \$700

Lot 161



A Japanese Jade Green Cloisonne Vase. Height: 12". Silver rim at top and base, bulbous body, broad short neck. Attractive mottled green and archaic pattern.

**Estimate
\$1,800 to \$2,200**

Lot 162



A Chinese Dark Blue and White Porcelain Plum Blossom Ginger Jar. Height: 11". A lovely pattern of plum blossoms with a ring of heart-shaped devices around aperture. Small stemmed lid. Maker's mark in seal-script characters at bottom.

**Estimate
\$300 to \$500**

Lot 163



A "Longquan"-Style Celadon-Glazed Floral Serving Dish. Diameter: 11 7/8".

**Estimate
\$400 to \$600**

Lot 164



A Pair of Ornate Japanese Antique Square, Footed Bronze Vases. Height: 13". Late 19th-early 20th Century. Turtle on one face, bi-horned komainu head on two sides, bearded figure (adaption of Fukurokuju) standing atop two cranes in flight. All on a wave pattern background. Maker's characters on bottom. Rich deep brown patina.

**Estimate
\$1,500 to \$2,500**

Lot 165



A Japanese Antique Lidded Incense Burner. Height: 17". Late 19th-early 20th Century. Superbly detailed turtle, dragon, tanuki, dragon-headed koi, tiger and komainu around. Six curvate legs with komainu heads on a round base with central intricate pattern. Atop the lid is a kneeling figure raising a club to beat a rug on a stand behind him. The figure has separated from the lid, and his pegged arm has come off.

**Estimate
\$1,500 to \$2,000**

Lot 166



A Pair of Japanese Antique Floral and Fauna Bronze Vases. Height: 15 3/4". Late Meiji-early Showa. High-relief pair of rock ptarmigan with a floral background; Hoopoe on a stalk by large petals. Maker's characters on bottom. Dark birch patina.

**Estimate
\$1,800 to \$2,200**

Lot 167



A Japanese Bronze Group of an Elephant Battling Two Tigers. 15 x 23". Late Meiji-early Showa. Realistic scene with the bellowing pachyderm pinning one of the tigers beneath his foot as it turns to deal with the other tiger who has leapt upon his back. Ivory or bone tusks, the tigers with detailed glass eyes.

**Estimate
\$2,500 to \$3,000**

Lot 168



A Large Chinese Carved Jadeite Mountain Village Scene. Fine pale green jadeite. Height: 9", Width: 13". Mid-20th Century. Child and old man before a small plank bridge, house; mountains with floral patterns, birds and homes behind. With carved dark wood footed stand. An attractive jadeite carving of excellent quality.

**Estimate
\$5,000 to \$7,000**

Lot 169



A Decorative Japanese Bronze Fan and Shield. Height: 124mm. Early 20th Century. High-relief, round buckler topped by a horseshoe, flowers and fan behind; legend on reverse.

**Estimate
\$75 to \$125**

Lot 170



A 19th Century Bronze Tibetan White Tara. Finely cast bronze White Tara, the female deity for health, healing and long life. She is the embodiment of wisdom and purity. Cast in the round, seated in vajrasana, holding a ceremonial object with both hands. Adorned in a simple dhoti and elaborate beaded jewelry, the serene face with a gentle smile beneath a high tiara. Seated on an integral lotus base. Missing one earring inset and base plate, otherwise excellent condition. Height 31cm. Width 20cm.

Estimate
\$1,000 to \$1,500

Lot 171



A 19th Century Bronze Tibetan White Tara. Finely cast bronze White Tara, the female deity for health, healing and long life. She is the embodiment of wisdom and purity. Cast in the round, seated in vajrasana, holding a flame tipped sword in her raised right hand. The left hand in charity giving varada mudra, raised with thumb and first finger touching. Adorned in a simple dhoti and elaborate beaded jewelry, the serene face with a gentle smile beneath a high tiara inlaid with a central turquoise stone. Seated on integral lotus base having a copper base plate, stamped with double dorji. Excellent condition. Height 29cm. Width 22.8cm.

Estimate
\$1,000 to \$1,500

Lot 172



Chinese Silk Dragon Tapestry. 60 high x 28 1/2" across. 19th-early 20th Century. Large facing dragon, a phoenix above and below, in many colors on an olive gold-green field. Small rent in lower field.

Estimate
\$100 to \$150

Lot 173



Decorative Blue Dragon Japanese Ceramic Bowl. 9 1/8" diameter. 19th-early 20th Century. Pale blue dragon circles clouds at center, multicolor floral pattern around, ornamented outer rim. Maker's four blue characters on back. Chipped on edge

**Estimate
\$50 to \$75**

Lot 174



Large East Asian Blue Floral Ceramic Charger. Diameter: 16". 20th Century. Pale blue vine and blossoms at center, floral pattern in deep colors around.

**Estimate
\$50 to \$75**

Lot 175



Large East Asian Floral Pattern Ceramic Charger. Diameter: 17 3/4". 20th Century. Chinese or Japanese. Multicolor floral patterns including fanned pawlonia-like leaves.

**Estimate
\$60 to \$90**

Lot 176



Large Chinese Blue and White Ceramic Charger. Diameter: 18". Large blossoms and petals in two baskets, a small bird before; decorative outer ring. 20th Century.

**Estimate
\$60 to \$90**

Lot 177



Two-piece Traveling Buddhist "Box" Shrine.Height: 4 ½"; 2 1/3" wide. 20th Century. Carved Bone; oval. Inside one shell is Mahakala, a nude woman offering herself before him. On the inside of the outer shell is a facing bodhisattva. The outer shell faces adorned with a butterfly.

Estimate
\$100 to \$150

Lot 178



Trio of Jade Figural Rests.Archaic Leopard, 5". Mottled sea green; Mythic creature, head reverted, 3", mottled gray-brown; Two children stretching out blanket, 3 1/3", pale green; also Double Ram goat plaque with character and two amulet discs, 2 ¾", mottled blue- and sea-green. (4)

Estimate
\$75 to \$100

Lot 179



Circular Jade Ornaments.Ca. 2 to 2 1/3". Double dragon (3), double leopard, Turtle, Serpent and dog, Ram goat, Two animals atop disc with central holes. Gray-white, light green. (9)

Estimate
\$150 to \$200

Lot 180



Jade Pendants.Double fish, pale green; Buddha's Foot with spider, white. 1 ¾"; Plaque with facing birds and avian-form bowl, 2 7/8", sea-green. The first two with suspension ring; also Chinese stone bead bracelet. (4)

Estimate
\$75 to \$100

Lot 181



Grouping of Jade Circular Ornamental Plaques. 1 $\frac{3}{4}$ to 2 $\frac{1}{4}$ ". Double bird with character, Stylized double dragon, Double fish, Mythic creature on mirror-form, Leopard (6mm thick), and Dragon (oval). Mottled sea-green; mottled gray-white, orange-brown. (6)

Estimate
\$100 to \$150

Lot 182



Jade Disc Ornaments. Circular row of figures, 2 $\frac{1}{3}$ ", 8mm thick, mottled brown sea-green; Animal-pattern, 2 $\frac{1}{4}$ ", 12mm thick, white; Fancy pattern, 2", 7mm thick, pale green; Bead pattern, 2", 5mm thick, white; also Ink Stone, archaic character, 2 $\frac{3}{4}$ ", mottled pale green. (5)

Estimate
\$100 to \$150

Lot 183



Sextet of Jade Animal Ornaments. Ca. 2". Mythic bird, Horse, Winged ram-goat with leopard, Reclining Goat with vase, Double mythic bird, and Monkey riding horse; gray-white, pale green and sea green. (6)

Estimate
\$125 to \$175

Lot 184



Jade Ornament Plaques. Pair of Seated bird-headed figures. Height: 4 $\frac{1}{8}$ ", black; Stylized Dragon. 4", lightly mottled white; and Horse running in field. 3 $\frac{3}{4}$ ", pale green. (4)

Estimate
\$125 to \$175

Lot 185



Lot of Jade Animal-form Ornaments.Ca. 2 to 4". Songbird seated on a tall stump, pale green; Pot-bellied Pig, mottled light green; Rooster, blue-green; Stylized leopard on a swan, white; Plaques - Serpent head on each end atop altar (2), mottled green; Butterfly, gray-white; and Running Horse belt buckle, white. (8)

Estimate
\$125 to \$175

Lot 186



Group of interesting Jade Ornamental Plaques.Two bulging-eyed goldfish swimming on a leaf, 4", pale brown-green; Mermaid on a leaf, 3 1/3", white; Double bird, 3", pale gray-white; Tree with fence and bird, legend other side, 3 1/3", light green; Mythic bird and dragon, 2 1/3", white; Elongate lizard, 2", yellow-brown; and Fu dog, 1 1/2", gray-white. (7)

Estimate
\$125 to \$175

Lot 187



Pair of Jade Rectangular Plaques.Tiger, turtle with entwined serpent face dragon and mythic creature. 3 1/2 x 2 1/4", dark sea-green; and Mythic creature in floral pattern. 2 1/3 x 1 1/2", reddish-tobacco yellow. (2)

Estimate
\$90 to \$120

Lot 188



Buddhist Jade Ornaments.Seated Buddha. 2 1/3"; Chinese figure on Buddha hand. Height: 2 1/2"; Smiling Buddha flanked by two bearded men. 1 3/4", pale yellow; and Guanyin plaque. 3". Pale gray-white

Estimate
\$90 to \$120

Lot 189



Lot of Jade Ornaments. 2 ½ to 3" each. Double phoenix with dragon face; Goats on disc, pale and mottle green; Archaic-style Double Dragon with face plaque, grey-green; Floral plaque, sea-green; and Nude woman plaque, mottled white. (5)

**Estimate
\$100 to \$150**

Lot 190



Group of Jade Animal Ornaments. 2 ½ to 3". Cicadas (2), mottled white; Griffin-like bird, tawny yellow-green; and Three fish plaque, buttery yellow.

**Estimate
\$100 to \$150**

Lot 191



Jade Plaque Ornament Septet. Ca. 2 ½ to 3" each. Mystic knot, mythic dancer (tiny chip), dragon, double mythic animals (2), stylized serpents (2). Pale green, sea green and buttery light brown. (7)

**Estimate
\$100 to \$150**

Lot 192



Jade Lidded Cosmetics Container. Circular, 2" diameter. Stylized dragon on lid, very pale green.

**Estimate
\$60 to \$90**

Lot 193



Jade Seals.(2). 1 7/8", 1" high. Apple-green; 1 7/8, 3/4" high. Both with mythic animals; archaic characters; also Jade bell ornament. 2 7/8". Joined double animal head across. Mottled pale green. (3)

**Estimate
\$90 to \$120**

Lot 194



Jade Ornament Quartet.Ca. 2" each. Winged creature head on each end, mottled pale green; Canister flanked by fish, grey green; Ovoid with fish, pale green; and Rabbit with cart, grey sea-green. (4)

**Estimate
\$100 to \$150**

Lot 195



Quartet of Jade Plaque Ornaments.2 1/3 to 3 1/2", 6 to 10mm thick. Aquatic scene, mottled gray green; archaic ax/grinder shape with stylized dragon pattern, light green; child and fruit; quadruped in floral scene, caramel-tobacco. (4)

**Estimate
\$100 to \$150**

Lot 196



Lot of circular Jade Plaque Ornaments.Ca. 2" diameter. Stylized dragon (2), Double leopard, Double birds, mottled white - pale gray-green; and Ornamental container with two doves, dark green. (5)

**Estimate
\$125 to \$175**

Lot 197

Pair of Red Jade Ornaments.Ca. 2 ¼" each. Leopard with vase; Leopard atop hillock; also Jade Cicada Pendant, 3". Forest green cicada on an olive-green, brown plaque.

Estimate
\$100 to \$150



Lot 198

Quintet of Jade Animal-form Plaques.Archaic-style Dragon on leaf. 3 1/3", pale sea green; Quadrupe in decorative field. 3", red; Double Dragon. 3", pale green; Tiger (both sides). 2 1/3", green and white; and Mythic creature. 2", pale brown and sea green. (5)

Estimate
\$125 to \$175



Lot 199

Larger Jade Ornament Trio.Two standing women, 3 1/3, white-tinged black; Two stags back-to-back with disc and amulet discs, 2 ¾, attractive blue-green and sea-green; and Dragon Face, 3", black.

Estimate
\$100 to \$150



Lot 200

Quartet of larger Jade Ornaments.Mermaid on a leaf, 4"; Dragon on a "palette", 3; Circle with mythic creatures; and Double lizard-serpent, 2 ¾". Light to darker green. (4)

Estimate
\$100 to \$150



Lot 201

Jade Ornament Lot.Ca. 3 to 3 ½". Double bird; Circled lizard; Kissing birds with character plaque, pale green, white; and Winged Creature in ornate circle, buttery brown. (4)

Estimate
\$100 to \$150



Lot 202



Group of Jade Ornaments.Each: 2 to 2 ½". Celestial horse; Double Lizard disc, pale green; Fish and birds scene; Archaic canister, mottled white; Stylized Dragon, brown; and Aquatic plaque, pale caramel. (6)

Estimate
\$100 to \$150

Lot 203



Group of Jade Ornaments.Ca. 2" each. Bird swallowing its own tail; Cicada with forepart of a man, pale green; zoomorphic birds, white; and eight-armed goddess, tawny white. (4)

Estimate
\$60 to \$90

Lot 204



Quartet of Jade Ornaments.Each 2 to 2 ½". Circled dragon, pale green; Floral tablet, whit jade with reddish-brown and green steaks; Double Lizard; and Zoomorphic, mottled white. (4)

Estimate
\$60 to \$90

Lot 205



Lot of Jade Ornaments.2 to 3" each. Zoomorphic bird attacked by big cat; Circled sea creature; griffin-like bird; Kissing birds on disc; Circular with archaic character (chipped), pale green; Boy, dark green. (6)

Estimate
\$100 to \$150

Lot 206



Jade Archaic-style Mirror Ornament.4 7/8". Dragon and mythic creature face each other. Mottled sea green.

Estimate
\$50 to \$75

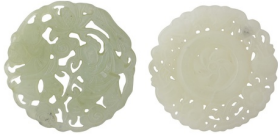
Lot 207



Jade Ornament Sextet. 2 to 3" each. Circled lizard; Double horse with character; Zoomorphic; Double discs; "Push me-Pull You" creature with head on each end. Pale to dark green; Sun bird on plaque, brown-white. (6)

**Estimate
\$100 to \$150**

Lot 208



Group of Circular Jade Ornaments. Ca. 2" each. Floral pattern, pale green, white; and laughing Buddha, deep green. (4)

**Estimate
\$75 to \$100**

Lot 209



Quartet of Jade Ornaments. Ca. 2" each. Monkey running in oval inset; Double Fish, light green; Scarab, dark mottled green; and Quadruped atop hillock, red. (4)

**Estimate
\$100 to \$150**

Lot 210



Pair of Jade Necklaces. Pale green and dark green. (2)

**Estimate
\$75 to \$125**

Lot 211



Lightly gilded Soapstone Figure of Guanyin. Guanyin stands facing at left, a child, hands in prayer, at right.

**Estimate
\$75 to \$100**

Lot 212



Jade Plaque depicting Musicians and Dancers. 7 7/8 x 11 7/8". Five musicians perform at center, festive dancer at each top and bottom corner. Sea-green.

**Estimate
\$200 to \$300**

Lot 213



Jade Ornaments. Inkwell. 3 1/3", mottled white; Mythic quadruped climbing up woman's back. 3 1/2", red and green; Double-headed dragon "Push Me Pull You" on altar (2). 3 3/4", 7mm thick; and 3 1/3", 5mm thick, white. (4)

**Estimate
\$100 to \$150**

Lot 214



Lot of Jade Figural Ornaments. Larger (13) - height: 2 3/4 to 4", one in plaque form; Smaller (3), height: 2 1/3 to 2 1/2". Court officials, dancers, women, soldier, old man, etc.; also a cylindrical amulet pierced both ends. (17)

**Estimate
\$200 to \$300**

Lot 215



Jade Ornaments in the form of Vessels. Two-handled cup face, 2", pale gray-green; Rectangular vases, 2 1/2 and 2 1/3", green, and white; pierced ends and open ends for use as pendant; Bird-handled vase, 1 7/8, white; also Soapstone vase, blue, light pink-brown with warrior and ornaments. (5)

**Estimate
\$90 to \$120**

Lot 216

Jade Figure of a Young Soldier.Height: 8 ¾". Mottled pale green.

Estimate
\$125 to \$175

**IMAGE
PENDING**

SPINK
WHERE HISTORY IS VALUED

Lot 217



Jade Tally Stick Ornament with Archaic Chinese Characters.Height: 13 ¼". Mottled dark green.

Estimate
\$100 to \$150

Lot 218

Archaic Style Jade Dragon-Horse Ornament.Height: 8 ¼". Dark green.

Estimate
\$60 to \$90

**IMAGE
PENDING**

SPINK
WHERE HISTORY IS VALUED

Lot 219

Mottled White Jade Figure of an Ancient Court Official.Height: 7 ¾". Hand clasped at midsection, capped by a small circular disc.

Estimate
\$100 to \$150

**IMAGE
PENDING**

SPINK
WHERE HISTORY IS VALUED

Lot 220

Trio of Jade Bangles.Two pale green, small to medium and medium wrist; one green and white (with red-brown fleck), medium. (3)

Estimate
\$100 to \$150



Lot 221



Trio of Jade Bangles.Two light translucent apple-green, small wrist; one pale green, medium. (3)

Estimate
\$100 to \$150

Lot 222



Pair of Carved White Jade Bangles.Double dragon, small wrist; and rabbit with floral pattern, very small. Both with green flecks. (2)

Estimate
\$100 to \$150

Lot 223



Trio of Jade Bangles.Two green and white, one pale green. All small wrist size. (3)

Estimate
\$100 to \$150

Lot 224



Lot of Jade Figural Ornaments.Child. 3 1/3", pale yellow; 2 3/4", mottled gray-green; Kneeling figures (2), 2 1/2", pale green, olive green; Celestial, 2", deep seal green; Standing court official, 2 1/2", dark apple green; and Seated figure, 1 1/2", white. (7)

Estimate
\$125 to \$175

Lot 225



Jade Ornamental Mirror-form Plaque.Diameter: 4 1/2". Archaic-style mirror with a border of three anteaters. Mottled sea-green with reddish-brown streaks.

Estimate
\$90 to \$120

Lot 226

Large Jade Ornamental Plaque. 3 3/4 x 5". Double dragon. Gray.

**Estimate
\$60 to \$90**



Lot 227

Pair of Jade Plaque Ornaments in serpentine form. Archaic dragon. Length: 8", blue-green; and double-headed serpent in the knot of eternity swallowing its own tails. Length: 6", mottled pale yellow-brown.

**Estimate
\$150 to \$200**



Lot 228

Pair of Jade Plaque Ornaments in the form of a Dog. Length: 5 1/2". Snarling dog adorned with characters, incuse characters on back. Mottled reddish-brown and white. (2)

**Estimate
\$75 to \$100**



Lot 229

Jade Disc Ornament. Diameter: 2 3/4", 6mm thick. Branch, bird and archaic horse-like dragon, outer pattern. Weathered pale green.

**Estimate
\$75 to \$127**



Lot 229A

Jade Plaques. Pair depicting two stylized leopards, high-relief floral disc on backs. 2 3/4"; and Stylized aquatic scene with turtle. 3 1/3" Deep forest-apple green. (3)

**Estimate
\$100 to \$150**

**IMAGE
PENDING**

SPINK
WHERE HISTORY IS VALUED

Lot 231



Large Jade Pendants 2 ¼ to 2 ½". Ovoid - Old man, Laughing Buddha. Raised plaque - Seated Chinese deity. Green and white; Ovoid - Leopard climbing decorative hillock. Apple-green and dark green. All save the first with small suspension ring; also small laughing Buddha head, white on a silver chain. (5)

Estimate
\$150 to \$200

Lot 232



Menagerie of Jade Animal Figures. 2 to 2 ¾". Seated lion, Sea horse, Long-billed bird - pale green; Elephant, grayish white; and Monkey, brown. (5)

Estimate
\$100 to \$150

Lot 233



Quartet of Jade Animal Ornaments. Length: 3 to 4". Stylized humped bull, mottled light sea green; Duck, Mottled gray-green; Reclining goat, reddish; and ancient-style Doe, dark sea green. (4)

Estimate
\$100 to \$150

Lot 234



Group of Jade Animal Figures. Length: 2 to 3 ½". Reclining ram; Horse; Boar; and Seated mouse, pale green; also red jade floral pendant with leopard. (5)

Estimate
\$100 to \$150

Lot 235

Pair of ancient-style Jade Pigs. Height: 2 ¾". Sea green. (2)



Estimate
\$90 to \$120

Lot 236

Trio of Jade Rests. Two in the form of a reclining bird. 4 1/3", mottled light green; the other in the form of a serpent entwined row of dragon teeth. 5 7/8" long, very pale green. (3)



Estimate
\$100 to \$150

Lot 237

Jade Brush Holder. 6 ¼ x 3". Wave pattern surmounted by animal head. Mottled grayish white.



Estimate
\$75 to \$100

Lot 238

Jade Brush Holder. 6 x 3 ½ ". Wave pattern, mythic animal atop. Mottled grayish pale-green.



Estimate
\$75 to \$100

Lot 239

Jade Figure of a Dancing Woman. 7 ¾". Light apple-green. Dancer holding open fan.



Estimate
\$100 to \$150

Lot 240



White Jade and Onyx Pendant Necklace.White jade happy Buddha head pendant, onyx beads with white and light green spacers; also Carved Bone-Pattern Amulet Necklaces (2). Both depicting one of the Eight Immortals, fabric necklace with white spacers, one short cord, the other long. (3)

Estimate
\$75 to \$125

Lot 241



Group of Chinese Necklaces.Blue (jade?) Phallic amulet on an onyx bead necklace; Blue Crystal conical headed seated figure amulet on a necklace with two banded agates and black stone; DZI-style Agate beads with various spacers; Green Agate round and square beads; and faux lapis beads with cinnabar spacers. (5)

Estimate
\$125 to \$175

Lot 242



Trio of Chinese Bead Necklaces.Cinnabar with turquoise and other spaces; long strand; Turquoise with yellow agate spacers, long strand and Cinnamon-red Agate with onyx and other spacers.

Estimate
\$100 to \$150

Lot 243



Lot of Jade ornamental Plaques.Double dragon, mythic creatures, running horse, leaf, deer, double fish, floral, etc. Generally 2 to 3", circular and rectangular, and mostly, pale green, white. (16)

Estimate
\$200 to \$300

Lot 244



Group of Jade Ornaments.Ca. 2 to 3 ½". Face, swan-handled vessel, beaded fruit, ram-headed figure, kneeling figure, open-work patterns, buckles, etc.; some plaques. Pale green, sea green, apple green, brown' also one broken ornament. (14)

Estimate
\$225 to \$275

Lot 245



Pair of large carved Abalone Shells.7 1/3 and 6 7/8". Each with row of archaic Chinese characters, with radiant character, superimposed devices. Latter chipped; also Scorpion Paperweight. Scorpion on a stone set in a Faux Amber covering. (3)

Estimate
\$30 to \$40