

SPINK

WHERE HISTORY IS VALUED

KA-CHING!

20 SEPTEMBER - 31 OCTOBER 2021
LONDON

**ANN
CARRINGTON**



KA-CHING!

ANN CARRINGTON

20 SEPTEMBER - 31 OCTOBER 2021
WORKS FOR SALE

SPINK

WHERE HISTORY IS VALUED

69 SOUTHAMPTON ROW
BLOOMSBURY
LONDON
WC1B 4ET

WWW.SPINK.COM

#SPINK_AUCTIONS

KA-CHING! ANN CARRINGTON

Exhibition - Works for Sale

20th September - 31st October 2021



Open to the public Monday to Friday 9:30am - 5pm or by appointment

Spink UK

69 Southampton Row
Bloomsbury
London
WC1B 4ET
Email: concierge@spink.com
Tel: +44 (0)20 7563 4000
Fax: +44 (0)20 7563 4066

Your team at Spink

Rita Ariete

Chief Client Officer
Email: rariete@spink.com
Tel: +44 (0) 7872 153 788

Tim Robson

Senior Specialist
Email: trobson@spink.com
Tel: +44 (0)20 7563 4007

Alzbeta Lanova

PR, Marketing & Design
Email: alanova@spink.com
Tel: +44 (0)20 7563 4030

Spink USA

145 W. 57th St.
18th Floor
New York
10019
Email: usa@spink.com
Tel: +1646 941 8664
Fax: +1646 941 8686

Spink China

4/F and 5/F
Hua Fu Commercial Building
111 Queen's Road West
Sheung Wan, Hong Kong
Email: china@spink.com
Tel: +852 3952 3000
Fax: +852 3952 3038

Spink Asia

50 Raffles Place
#17-01 Singapore Land
Tower
Singapore
048623
Email: singapore@spink.com

Spink Switzerland

Via Livio 8
6830 Chiasso
Switzerland
Email: switzerland@spink.com
Tel: +41 91911 62 00
Fax: +44 91922 20 52



@SpinkandSon



@Spink_Auctions



Spink_auctions



Spinkauctions



Spink_auctions

STAMPS COINS BANKNOTES MEDALS BONDS & SHARES AUTOGRAPHS BOOKS
WINES & SPIRITS HANDBAGS COLLECTIONS ADVISORY SERVICES SPECIAL COMMISSIONS

FOREWORD

When I was first shown the images of Ann's stamp and coin works, I immediately felt there was a symbiosis between Spink and her renditions of Machin's stamp portraits and the Indian Head coin. On further investigation of some of Ann's other works and discovering the intricate work involved and the materials employed, I was determined to hold this major exhibition at our 69 Southampton Row premises. This catalogue represents the body of Ann's pieces to be included in the forthcoming exhibition.

I welcome Ann's clients and know that our own client base will find these unique and in many cases very relevant pieces interesting and intriguing.

I look forward to welcoming you to the world of Spink, decorated by Ann.

Olivier D. Stocker

Chairman and CEO

ANN CARRINGTON



The use of discarded, found and multiples of objects is a fundamental element of Ann Carrington's practice. All objects are saturated with cultural meaning, which she seeks to explore, unravel and investigate. Mundane objects such as knives, forks, barbed wire, pins and paintbrushes come with their ready-made histories and associations which can be deconstructed and analysed to give them new meaning as sculpture. Materials are merged with form to tell a story through objects which are familiar to us all.

Biography

Ann studied at Bourneville College of Art, Birmingham and The Royal College of Art, London, graduating in 1987 with an MA in sculpture. In 1988 she received The Herbert Read Award, followed by the Commonwealth Fellowship for Sculpture in 1992. Two major Arts Council of Great Britain awards followed in 1994 and 1997. In 2008 she was the winner of a national competition to produce a major new artwork for Margate seafront – Mrs. Booth and The Shell Ladies.

In 2010 Ann was invited by the United Nations to help raise awareness of current issues through her artwork. She has exhibited worldwide and fulfilled many private and public commissions, including the large scale public artwork, Manhattan Mettle, which was unveiled at The W Hotel, Hoboken, USA in 2011.

Ann was commissioned to make The Royal Jubilee Banner for the Queen in celebration of her Diamond Jubilee. The banner hung from the stern of the Royal Barge as it made its way up the River Thames on the occasion of the Thames Diamond Jubilee procession, 3rd June 2012. The Royal Banner was purchased by The Worshipful Company of Haberdashers, one of the twelve great livery companies of London and hangs permanently in the Haberdashers' Hall, West Smithfield.

In 2014 Ann produced commissions for The Waldorf Astoria, The Alpini Gstaad, and The Chiltern Firehouse, and followed these with her solo show Pom Pom Pompadour at Paul Smith's Mayfair gallery in March 2015. August 2016 saw 'Pop goes the Weasel!', a large retrospective exhibition, open at the Royal College of Art, Kensington, London. The centrepiece of the exhibition, Devil's Trumpet, a floral sculpture fashioned from cutlery, was acquired by the V & A for their collection and is now on permanent display in the Silver Gallery.

In 2019 Ann received the prestigious Freedom of The Haberdashers' Company of London in recognition of her achievements in the visual arts.

In 2020 Ann was granted Freedom of the City of London, an award for excellence and distinction in the arts. In the same year, Ann also received the City and Guilds gold medal for outstanding contributions to art.

Collections / Clients

Victoria and Albert Museum; The United Nations, Royal Mail; Royal College of Art; The Design Museum; Thames Diamond Jubilee Foundation; Rothschild Collection; Chiltern Firehouse; The Worshipful Company of Haberdashers; The National Trust; The Commonwealth Institute; The New Gallery of Modern Art, Moscow; Levi Strauss & Co; Citibank; Mars; Waldorf Astoria; Clarks; W Hotels; DAKS; Dunhill; Mercury Telephones; Agent Provocateur; Novogratz; Fred Segal; HRH Her Majesty Queen Elizabeth II; HRH Prince Charles; Duke of Westminster; William Russell; Lord Mayor of The City of London; Sir Paul Smith; Sir David Tang; Sir Elton John; Gwyneth Paltrow; Issey Miyake; Tyra Banks; Gordon Ramsay; Tom Kerridge; Lulu Guinness; Lilly Saffra; Andre Balazs; Donatella Flick.





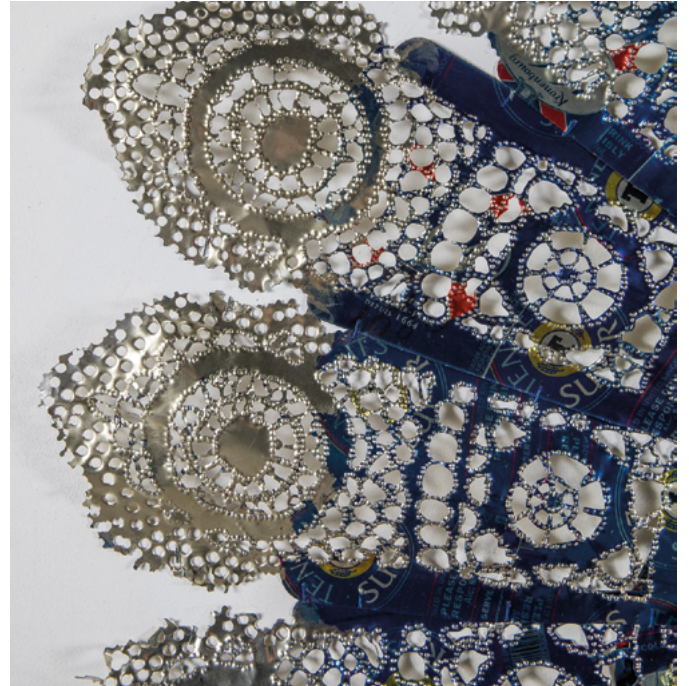
CHARLES OF KNIGHTRIDER COURT

Medium: Laser cut beer cans

Dimensions: 160 x 160 cm (63 x 63 in)

£17,200





ANN OF BLEEDING HEART YARD

Medium: Laser cut beer cans

Dimensions: 160 x 160 cm (63 x 63 in)

£17,200





ELIZABETH QUEEN OF SAVAGE GARDENS

Medium: Laser cut beer cans

Dimensions: 160 x 160 cm (63 x 63 in)

£17,200





MARIANNE

Medium: Hammered pewter

Dimensions: 117 x 117 cm (46.1 x 46.1 in)

£11,200





CHARLES II

Medium: Hammered pewter

Dimensions: 140 x 140 cm (55.1 x 55.1 in)

£14,200





ABENAKI

Medium: Hammered beer cans

Dimensions: 150 x 150 cm (59.1 x 59.1 in)

£16,500





LAKOTA

Medium: beer cans

Dimensions: 150 x 150 cm (49.1 x 49.1 in)

£16,500

PISS HEADS









APOLLO

Medium: Compressed beer cans

Dimensions: 36 x 58 x 111 cm (14.2 x 22.8 x 43.7 in)

£12,600





DIONYSUS

Medium: Compressed beer cans

Dimensions: 39 x 62 x 113 cm (15.3 x 24.4 x 44.5 in)

£12,600





APHRODITE

Medium: Compressed beer cans

Dimensions: 30.5 x 52.5 x 100 cm (12 x 20.7 x 39.3 in)

£12,600





LUCIA MONDELLO

Medium: Compressed beer cans

Dimensions: 51 x 36.5 x 98 cm (20.1 x 14.3 x 38.6 in)

£12,600



PEARLY QUEENS







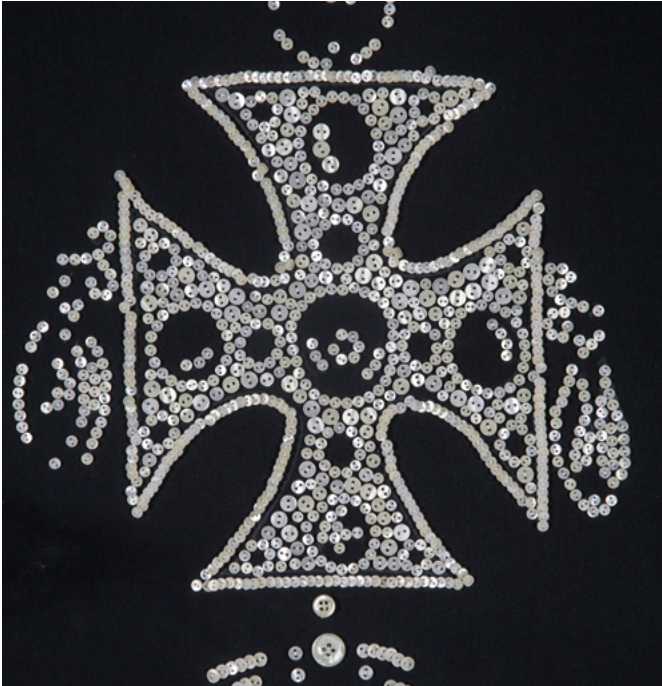
STARS UPON STARS

Medium: Coloured buttons on black canvas

Dimensions: 132 x 87 cm (52 x 34.3 in)

£11,300





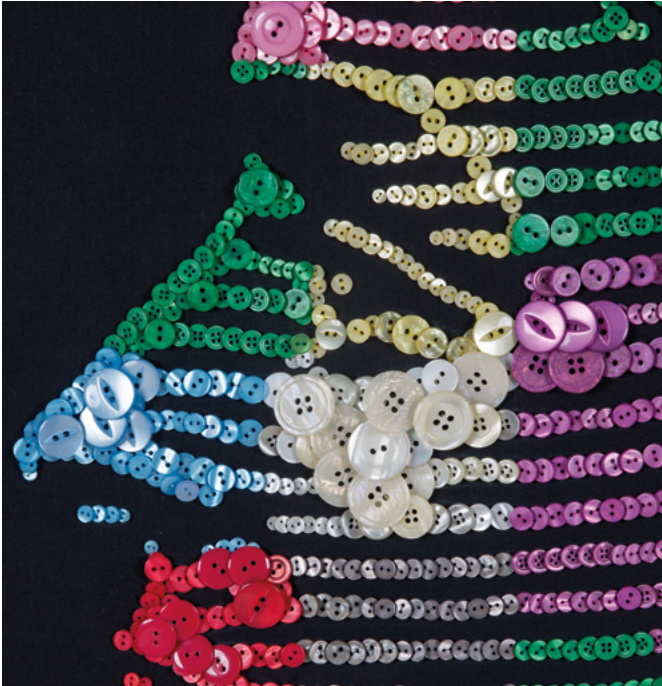
PEARLY CROWN JEWELS OF MOUNT PLEASANT

Medium: Buttons on black canvas

Dimensions: 160 x 120 cm (63 x 47 in)

£13,200



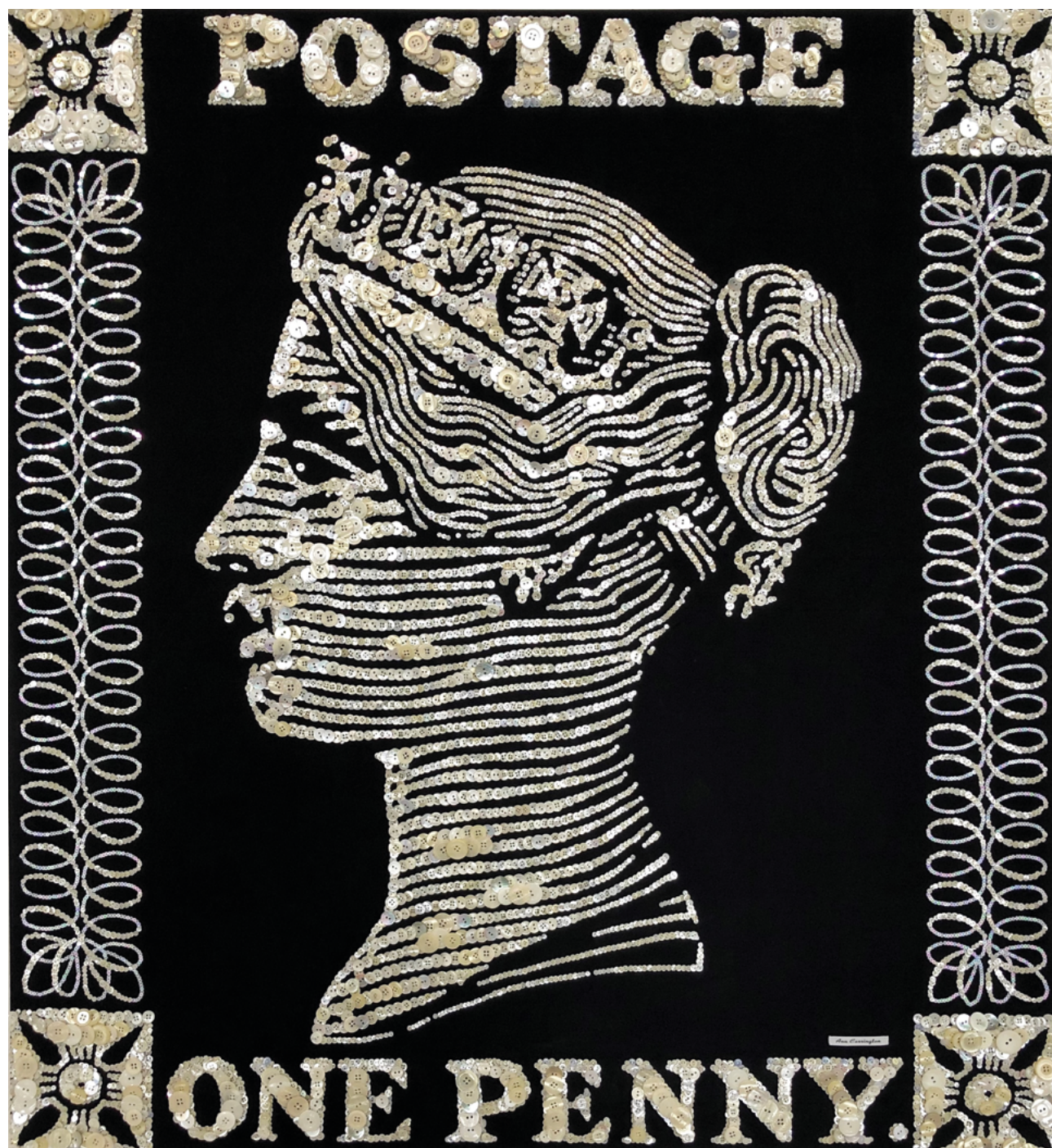


PEARLY QUEEN OF RED LION PASSAGE

Medium: Coloured buttons on black canvas

Dimensions: 125 x 150 cm (49 x 59 in)

£13,400





PEARLY QUEEN OF VICTORA PARADE

Medium: Buttons on black canvas

Dimensions: 120 x 110 cm (47.2 x 43.3 in)

£11,300





PEARLY QUEEN OF EATON SQUARE

Medium: Buttons on black canvas

Dimensions: 100 x 90 cm (39.5 x 35.5 in)

£8,200

PEARLS AND BEADS









ORB WEAVER

Medium: Steel, brass and bronze

Dimensions: 131 x 160 x 23 cm (51.6 x 63 x 9.1 in)

£25,500





SHENG FA WAVE

Medium: Mixed media including pearl neclaces,
brooches and tiaras

Dimensions: 154 x 119 x 43 cm (60.7 x 46.8 x 16.9 in)

£27,500

POTS OF MONEY









BRASHER DOUBLOON

Medium: Silver plated ceramic and resin

Dimensions: 67 x 67 x 125 cm (26.4 x 26.4 x 49.2 in)

£8,050





JACKPOT

Medium: Silver plated ceramic and resin

Dimensions: 58 x 58 x 104 cm (22.8 x 22.8 x 41 in)

£7,400





VOLCANO

Medium: Silver plated ceramic and resin

Dimensions: 52 x 52 x 91 cm (20.5 x 20.5 x 35.8 in)

£6,800

BOUQUETS









SILVER NERISSA

Medium: Silver, nicel and steel plated spoons

Dimensions: 53 x 53 x 65 cm (20.8 x 20.8 x 21.6 in)

£16,000





MADAME MOULLIERE

Medium: Silver, nickel and steel plated spoons

Dimensions: 53 x 53 x 74 cm (20.8 x 20.8 x 29.2 in)

£16,000





STARSHINE

Medium: Silver, nicel and steel plated spoons

Dimensions: 73.5 x 73.5 x 78.5 cm (29 x 29 x 30.9 in)

£18,000





DELFT SNOWBALL

Medium: Silver, nicel and steel plated spoons

Dimensions: 64 x 64 x 77 cm (25.2 x 25.2 x 30.3 in)

£18,000





MOONFLOWER

Medium: Silver, nickel and steel plated spoons

Dimensions: 62 x 86 x 85.5 cm (24.4 x 33.8 x 33.6 in)

£19,300





FUEGO

Medium: Silver, nicel and steel plated spoons

Dimensions: 34 x 34 x 44 cm (13.4 x 13.4 x 17.3 in)

£7,300





BORAGO

Medium: Silver, nicel and steel plated spoons

Dimensions: 44 x 44 x 54 cm (17.3 x 17.3 x 21.25 in)

£7,600



BY APPOINTMENT TO
HER MAJESTY THE QUEEN
MEDALISTS & PHILATELISTS
SPINK & SON LTD., LONDON



BY APPOINTMENT TO
H.M. THE DUKE OF EDINBURGH
MEDALISTS
SPINK & SON LTD., LONDON

SPINK

FOUNDED

1666

WHERE HISTORY IS VALUED

LONDON | NEW YORK | HONG KONG | SINGAPORE | SWITZERLAND